

# Maintenance indicator



- ▶ Monitors appliance usage
- ▶ Preventative maintenance reminder
- ▶ Direct replacement for Neon indicator
- ▶ Counts time that mains power is applied
- ▶ Remembers accumulated time even if power is switched off
- ▶ Connecting 'reset' terminal to Neutral resets timer to zero
- ▶ Blue LED indicates normal operation
- ▶ Flashing Red LED indicates service action is required
- ▶ Convenient snap-in design
- ▶ Fast-on terminals
- ▶ Bezel size 32 x 14mm

230V ±20% 50Hz. 115Vac, 24Vdc & 12Vdc available.  
Less than 1 watt (power consumption)

UL Pending



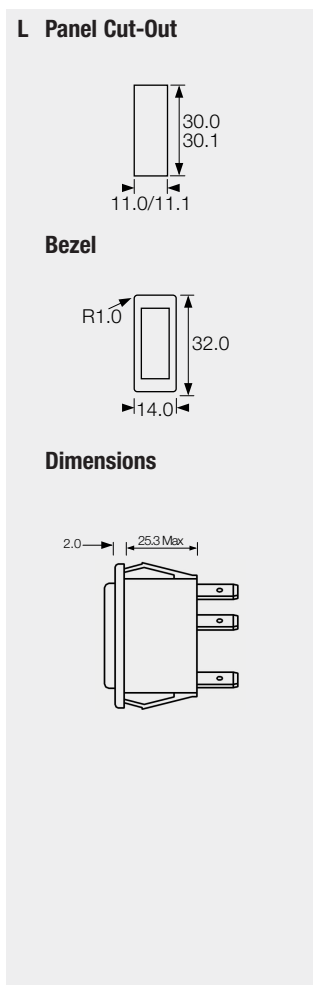
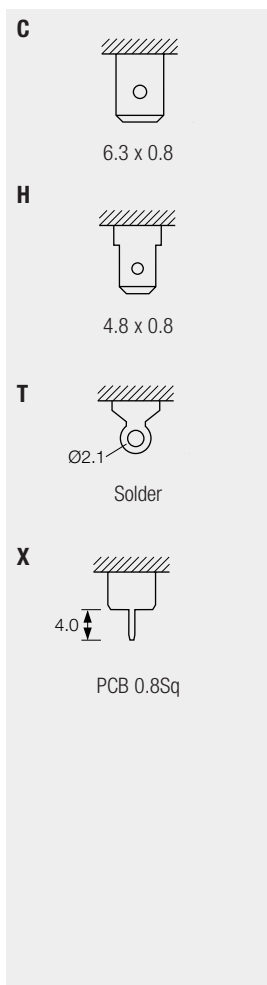
CE Mark



RoHS compliant



<b>▶ TERMINAL</b>	<b>▶ BODY &amp; DIMENSIONS</b>	<b>▶ SPECIFICATION</b>
-------------------	--------------------------------	------------------------



<b>Dimensions</b>	Bezel 32.0mm x 14.0mm Panel cut-out 11.0/11.1mm x 30.0/30.1mm 0.75mm to 2.5mm
<b>Panel thickness</b>	
<b>Body</b>	Nylon 6.6, matt finish, black colour is standard
<b>Lens</b>	Clear Polycarbonate, Softline matt finish
<b>Terminals</b>	Copper alloy, Silver plated
<b>Flame retardancy</b>	UL94V2
<b>RoHS compliant</b>	Yes
<b>Operating supply</b>	230V ±20% 50Hz. 115Vac, 24Vdc & 12Vdc available
<b>Power consumption</b>	Less than 1 Watt
<b>Operating conditions (body)</b>	-20°C to +70°C (-4°F to 158°F) 0 to 95% RH (non-condensing)
<b>Electromagnetic Compatibility</b>	Compliant with directives 89/336/EEC & 92/31/EEC
<b>EMC Immunity</b>	EN 55014-2:1997 Household appliances EN 61000-6-2:2005 Industrial Environments, 10 V/m
	EN 61000-4-2:1995 Electrostatic Discharges (ESD) EN 61000-4-3:2002 RF Electromagnetic fields EN 61000-4-4:2004 Fast Transients & Bursts EN 61000-4-5:1995 Surges EN 61000-4-6:1996 Conducted disturbances EN 61000-4-11:2004 Voltage dips & interruptions
<b>EMC Emissions</b>	EN 55014-1:2001 Household appliances EN 55022 Class B:1998 Domestic environments
<b>Timing period</b>	Any period from 1 minute to greater than 10 years
<b>Timing accuracy</b>	2% of scale
<b>Approvals</b>	UL Pending CE Mark

## APPLICATIONS

- ▶ Coffee machines – decalcification
- ▶ Deep fat fryer – oil change
- ▶ Air conditioning – filter change, bleaching
- ▶ Vacuum cleaner – filter cleaning
- ▶ Motorised equipment – preventative maintenance, lubrication, belt change
- ▶ Petrol/Diesel engine generator – engine service
- ▶ Central heating – gas appliance inspection
- ▶ Inspection/cleaning interval reminder – washrooms, kitchens
- ▶ Equipment calibration interval reminder
- ▶ Electrical safety check interval reminder

## OPERATION

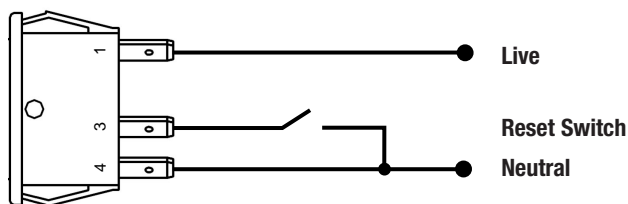
The smart indicator operates like a standard neon indicator, giving visible status indication for the appliance or application. Normal operation will show continuous Blue LED illumination (contact factory for other colours).

When the accrued usage time exceeds the factory-set time limit, the LED illumination changes colour to Red (contact factory for other colours) and starts to flash on/off to attract user attention. The indicator will continue to flash on subsequent appliance use, until the maintenance operation is carried out and the reset procedure followed.

To reset the indicator after maintenance operations are completed, simply link terminal 2 to terminal 3 while the indicator is powered. This could be a key-operated switch or a service button within the appliance.

The service interval time is factory programmed, and can be any time period from as little as one minute, up to tens of years.

## CONNECTIONS



## PART NUMBER

### 1432AL

Specify Terminal Type:	C, H, T, X
Specify Model Code:	1432AL
Specify Supply Voltage:	115Vac, 230Vac, 24Vdc, 12Vdc
Specify LED Colour:	Red/Green, Red/Blue
Specify Time Setting:	Time interval between 1 minute and 10 years. Specify the required time in minutes, hours, days, weeks or months.