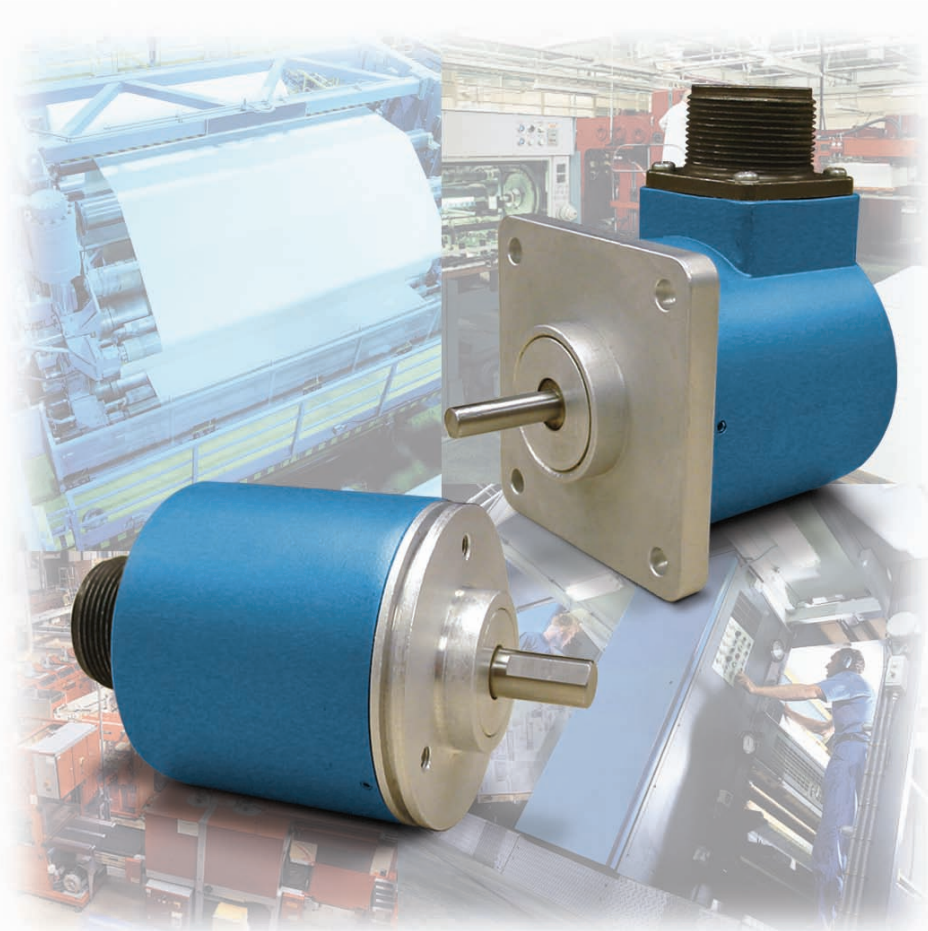


ERMEC

Distribución de Componentes
Eléctricos y Electrónicos

Avtron Model H25A

Optical, Solid Shaft Encoder



Tough and Compact!

- Shaft Sizes Include 1/4", 3/8", and 10mm
- Simple Installation
- Unbreakable Optical Disk
- Up to 32,768 PPR
- Wide-Gap Technology:
Up to 8X larger gap between sensor and rotor
- Replaces Competitive Models without Rewiring
- Industry Standard Face or Flange Mounting
- IP65/Nema 4 Rating: Dust and Liquid Tight
- Superior Bearings and Seals
- -40°C to +100°C Operation
- 2 Year No-Hassle Warranty

H25A encoders fit a vast array of applications, from coupled AC and DC motor shafts, servos, conveyors, and most any machine. The solid aluminum housing, and stainless steel shaft offer increased durability in tough environments.

Avtron encoders have superior shaft seals and bearings that stay sealed to keep contaminants out, through temperature cycling and liquid sprays. Our encoder seals are protected by

mechanical barriers to prevent flexing or failure. Avtron's superior bearings permit much larger side and axial loads for pulley and belt applications, and feature synthetic lubricants for even longer life in all applications.

Many competitive optical encoder designs risk sensor damage from any vibration or shock: sensors ride less than four thousandths of an inch from the thin, often flexible, optical disk spinning at full motor speeds. Some

designs even use thin glass disks in "industrial" products! Avtron uses only unbreakable disks and a sensor to disk gap over 8X larger than the competition.

Our optical H25A encoders use superior sensor, disk, bearing, and seal technology to give top performance in industrial conditions. Select an Avtron H25A today!

ERMEC, S.L. BARCELONA
C/ Francesc Teixidó, 22
Parque Empresarial Granland
E-08918 Badalona (Sur)

Tel.: (+34) 902 450 160
Fax: (+34) 902 433 088
info@ermec.com
www.ermec.com

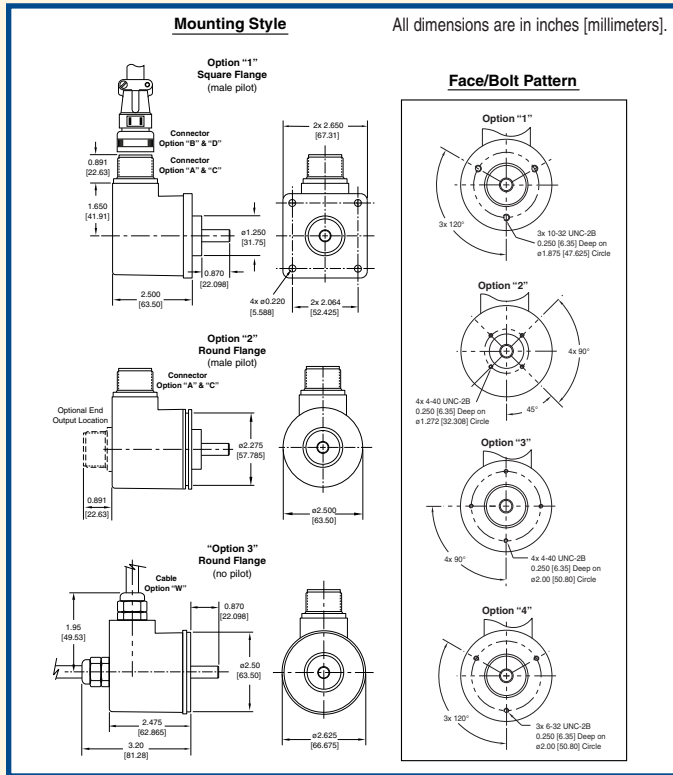
ERMEC, S.L. MADRID
C/ Sagasta, 8 1ª planta
E-28004 Madrid
(Spain)

PORTUGAL
portugal@ermec.com

**AVTRON**
QUALITY SYSTEM CERTIFIED TO ISO 9001
www.avtronencoders.com

H25A Optical Solid Shaft Encoder (0.25" to 0.39") [6.35mm to 10mm]

OUTLINE DRAWING



Check out our web site for more detailed specifications, drawings, and installation instructions. www.avtronencoders.com

SELECTION GUIDE

H25A PART NUMBERS AND AVAILABLE OPTIONS											
Mount	PPR*		Line Driver	Shaft Size	Connector Options	Wiring	Mounting Style	Face/Bolt Pattern	Seals	Channels	Special Features
H25A	A- 1 C- 25 F- 60 G- 100 H- 120 K- 200 L- 240 M- 250 N- 256 P- 300 E- 360 Q- 500 R- 512 S- 600 T- 625	U- 720 V- 900 W- 1000 Y- 1024 Z- 1200 1- 1250 2- 1440 3- 2000 4- 2048 5- 2500 6- 2540 7- 3600 D- 4096 9- 5000 0- Special	1- 5-28V (7272) 2- 5-28V, open collector (7273) 3- 5-15V (4469) 4- 5-28V in, 5V out (7272)	0- Non-std. With Flat A- 0.25" B- 0.375" C- 10mm Without Flat N- 0.25" P- 0.375" R- 10mm	W- 18" cable (pigtail)	A- Side E- End	1- Sq. Flange 2.625" w/ 1.25" male pilot 2- Rnd. Flange 2.5" w/ 1.25" male pilot 3- Rnd. Flange 2.62" no pilot	X- None 1- 3x 10-32 @ 1.875" 2- 4x 4-40 @ 1.272" 3- 4x 4-40 @ 2" 4- 3x 6-32 @ 2"	X- None A- Shaft Sealed B- Bearing Sealed	With Comp. A- ** A, \bar{A} B, \bar{B} Z, \bar{Z} B- A, \bar{A} B, \bar{B} D- A, \bar{A} Without Comp. E- A, B, Z F- A, B	000- None 9xx- Specify cable length xx=feet (use w/ Option "W")
Connector Options											
			10 Pin MS			6 Pin MS			7 Pin MS		
			A- w/o plug (std. phasing) B- w/o plug (reverse phasing) C- w/ plug (std. phasing) D- w/ plug (reverse phasing)	E- w/o plug (std. phasing) F- w/o plug (reverse phasing) G- w/ plug (std. phasing) H- w/ plug (reverse phasing)			J- w/o plug (std. phasing) K- w/o plug (reverse phasing) M- w/ plug (std. phasing) N- w/ plug (reverse phasing)				

* up to 32,768 PPR available

** N/A with MS 6 or 7 Pin Connector

MORE H25A ADVANTAGES

- All-digital design, no trim pots or adjustments for longer life
- Advanced sensor technology
- Superior bearings with synthetic lubricant for longer life
- No extra charge for signal complements and marker pulse
- More than 2X the axial and side load capability of the competition
- Superior line drivers withstand short circuits and reverse voltage wiring errors.

H25A SPECIFICATIONS

Operating Power: Volts: 5 - 28 VDC; Current: 50mA, no load

Output Format: (A, \bar{A} , B, \bar{B} , Z, \bar{Z} available)

Frequency Range: 0 to 125 KHz

PPR: 1 - 5000 Standard (for other PPR needs up to 32,768 consult factory)

Speed: 6000 RPM Max., (for higher speeds, consult factory)

Temperature: -40° to 100°C

Vibration: 5-2000Hz

Shock: 50G, 11mS duration

Weight: 0.95 lbs [431g]

CE Pending

ERMEC

Distribución de Componentes
Eléctricos y Electrónicos



All dimensions are in inches [millimeters].
Specifications and features are subject to change without notice.