



- Panel and PC mount models
- Snap-in panel mounting version
- Tactile feedback

### ELECTRICAL SPECIFICATIONS

- Max. current/voltage rating with resistive load :
  - gold plated brass contacts : 100mA - 30VDC
  - gold plated silver contacts : 1A 30VDC
- Initial contact resistance : 50 mΩ max.
- Insulation resistance : 1.000 MΩ min.
- Dielectric strength : 1.000 Vrms 50 Hz min.
- Electrical life : 60.000 cycles at full load

Models for high currents : see 18635A and 18645A at the end of the series.

### MATERIALS

- Case : PBT
- Actuator : polyamide, glass filled
- Bushing : brass, nickel plated
- Housing : stainless steel
- Bracket : tin plated steel
- Contacts
  - AD** : silver, gold plated
  - CD** : brass, gold plated
- Terminal seal : epoxy

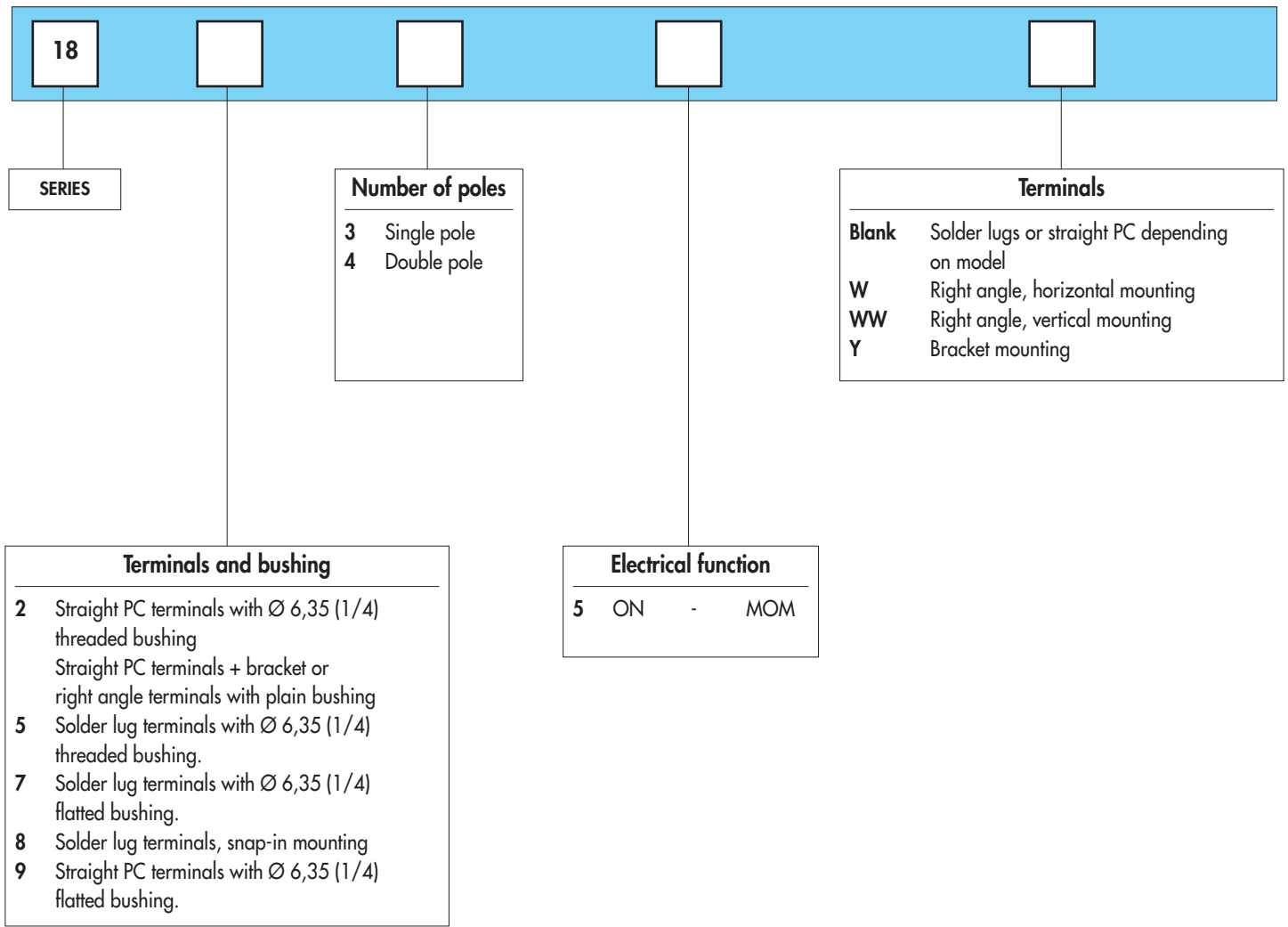
### GENERAL SPECIFICATIONS

- Total travel : 0,5 mm (.019)
- Torque : 1,25 Nm (.922 Ft.lb) max. applied to nut
- Operating temperature : -30°C to +65°C
- Soldering : 300°C, 3 sec. max.

# 18000 series

## Snap-action momentary pushbutton switches

Overview




B2

### ABOUT THIS SERIES

On the following pages, you will find successively :  
 - model structure of switches  
 - options in the same order as in above chart

**Dimensions** : first dimensions are in mm while inches are shown as bracketed numbers.

 **NOTICE** : please note that not all combinations of above numbers are available. Refer to the following pages for further information.



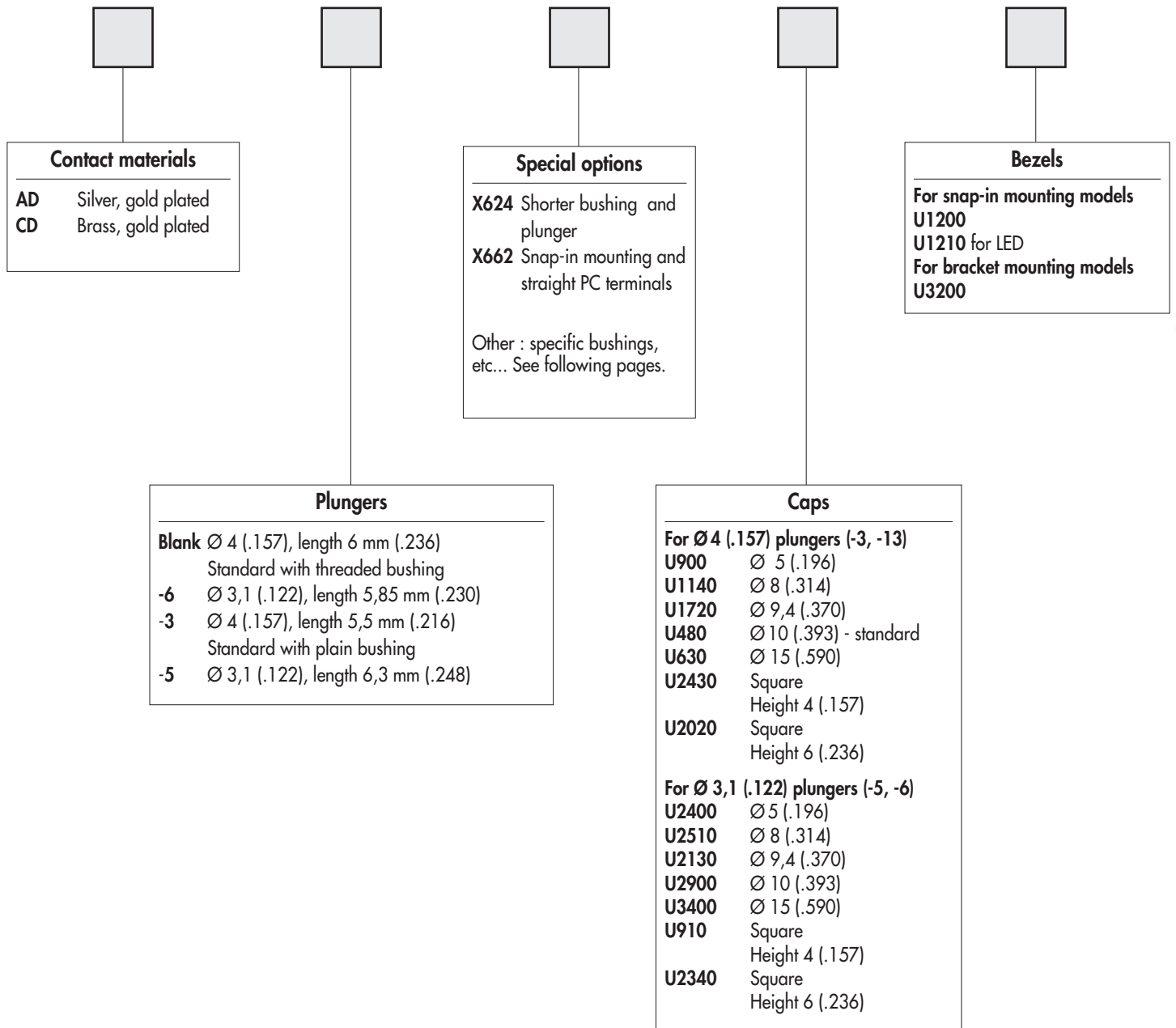
www.ermec.com



# 18000 series ermec@ermec.com

## Snap-action momentary pushbutton switches

Overview



B2



**Sealing boots** are available to protect the switches against dust and water. They are presented in section H.



**Mounting accessories** : standard hardware supplied with all models with Ø 6,35 (1/4) threaded bushing :  
2 hex nuts 8 mm (.314) across flats, 1 locking ring and 1 lockwasher.  
Standard and special hardware available are presented in section I.



**Packaging unit** : 25 pieces for W, WW double pole and 18800 models  
50 pieces for other models.



www.ermec.com

# 18000 series

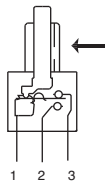
## Snap-action momentary pushbutton switches

Threaded bushing  $\varnothing 6,35$  (1/4) : 18500 - 18700 - 18200

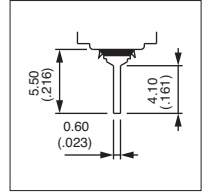
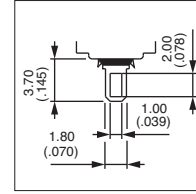
ermec@ermec.com

ERMEC L  
STRUCTURE

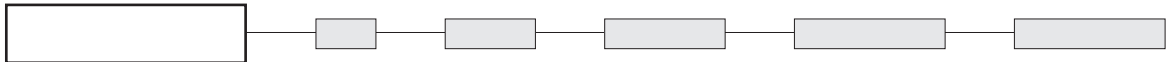
→ Keyway



- Solder lug or straight PC terminals
- Epoxy sealed terminals standard



MODEL  
STRUCTURE



Shown with standard plunger

### Solder lug terminals : 18500

→ Keyway



Single pole  
**18535**

Double pole  
**18545**



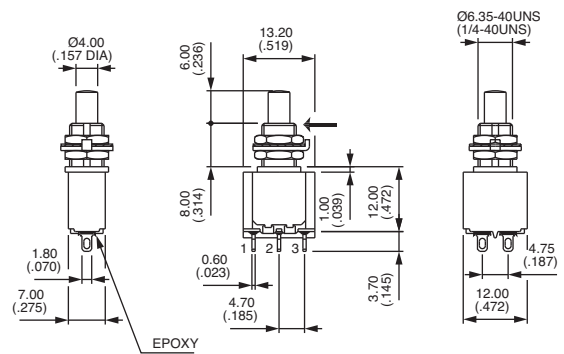
1-3

ON



1-2

MOM



### Flatted bushing - solder lug terminals : 18700

→ Flat



Single pole  
**18735**

Double pole  
**18745**



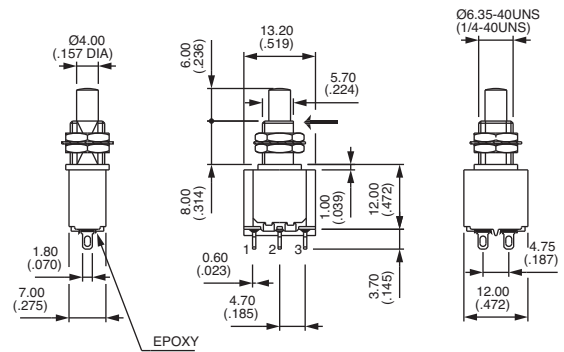
1-3

ON



1-2

MOM



### Straight PC terminals : 18200

→ Keyway



Single pole  
**18235**

Double pole  
**18245**



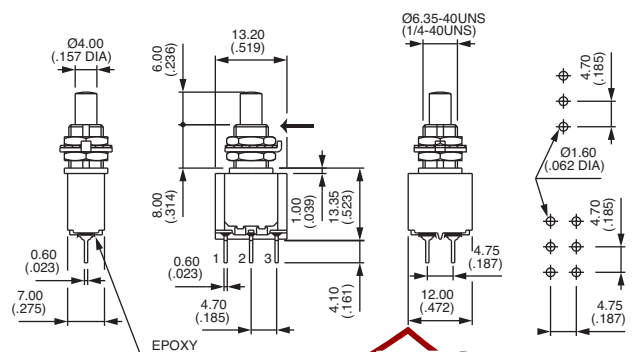
1-3

ON



1-2

MOM



www.ermec.com

www.ermec.com



# 18000 series ermec@ermec.com

## Snap-action momentary pushbutton switches

Threaded bushing Ø 6,35 (1/4) : 18900 - Snap-in mounting : 18800

### Flatted bushing - straight PC terminals : 18900

→ Flat



Single pole  
**18935**

Double pole  
**18945**



1-3

ON

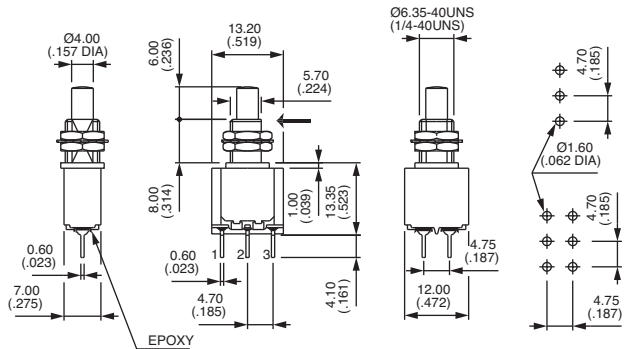


1-2

MOM

ON

MOM



### Snap-in mounting - solder lug terminals : 18800

Shown with cap U910 + U1200



Single pole  
**18835**

Double pole  
**18845**



1-3

ON

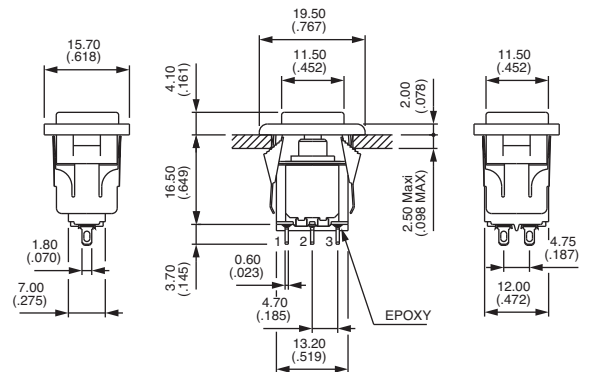


1-2

MOM

ON

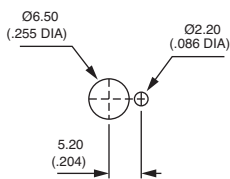
MOM



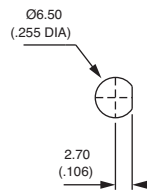
Available with straight PC terminals : see X662 under "Special options".

### PANEL CUT-OUT

#### 18500 - 18200

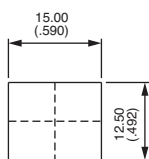


#### 18700 - 18900

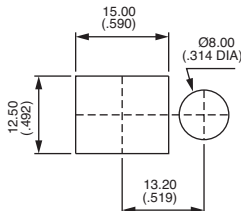


### PANEL CUT-OUT

#### 18800



With bezel **U1200**



With bezel **U1210** for LED



www.ermec.com





### Right angle terminals - vertical : 18200WW



Single pole  
**18235WW**

Double pole  
**18245WW**



1-3

ON

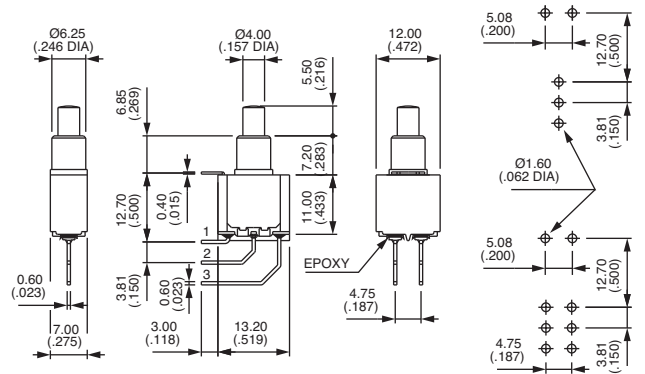


1-2

MOM

ON

MOM



### CONTACT MATERIALS

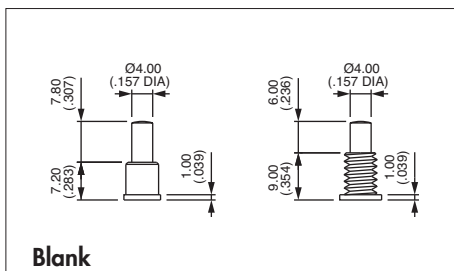


AD Silver, gold plated  
CD Brass, gold plated

### PLUNGERS

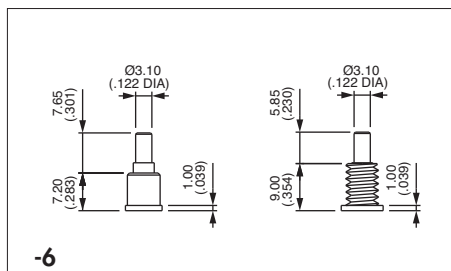


Dash compulsory before plunger code.



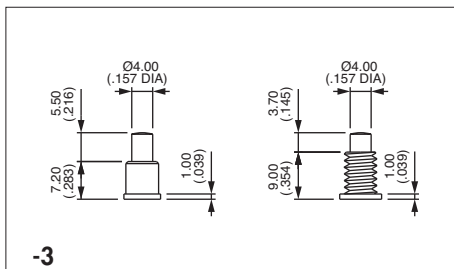
**Blank**

Ø 4 (.157) - standard with threaded bushing



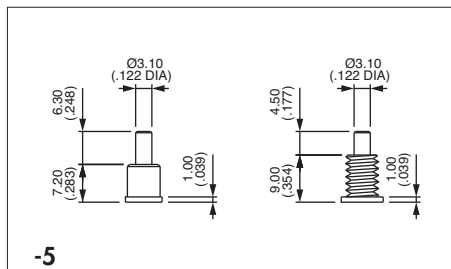
**-6**

Ø 3,1 (.122)



**-3**

Ø 4 (.157) - standard with plain bushing



**-5**

Ø 3,1 (.122)









### SPECIAL OPTIONS (continued)

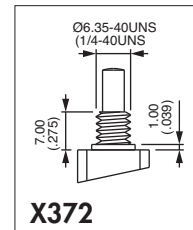


**X371** Plain bushing  $\varnothing$  6,25 mm (.246) (instead of standard threaded bushing).

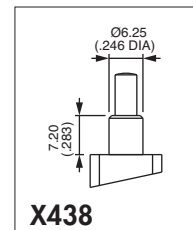
**X372** Shorter threaded bushing  $\varnothing$  6,35 (1/4). Height 7 mm (.274).

**X386** Threaded bushing  $\varnothing$  6,35 mm (1/4) to replace plain bushing on models W - WW and Y.

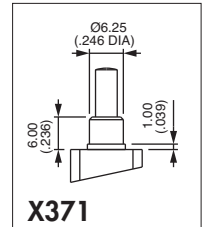
**X438** Plain bushing  $\varnothing$  6,25 mm (.246). Height 7,2 mm (.283) - without shoulder.



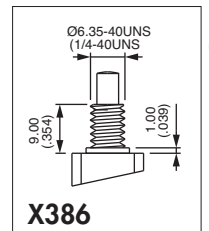
**X372**



**X438**

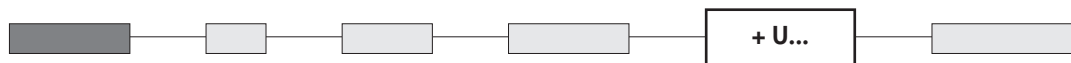


**X371**

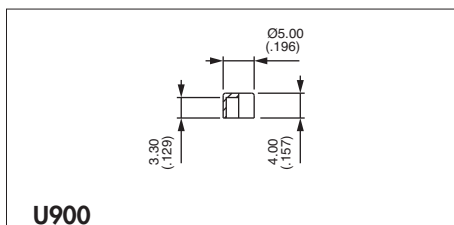


**X386**

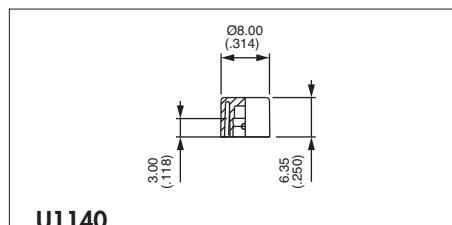
### CAPS



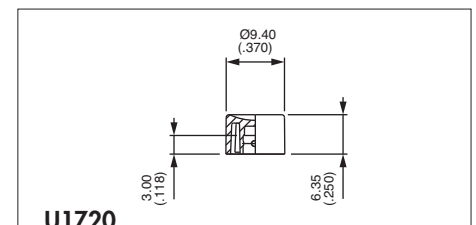
Caps for  $\varnothing$  4 (.157) plungers (-13, -3)



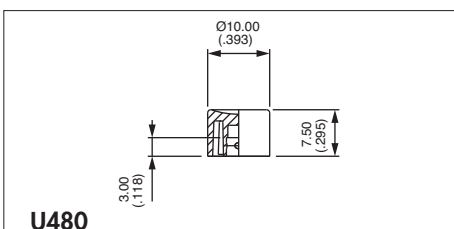
**U900**



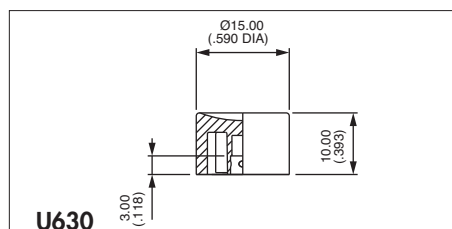
**U1140**



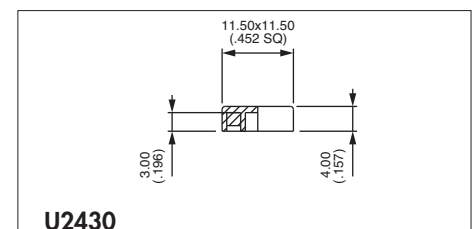
**U1720**



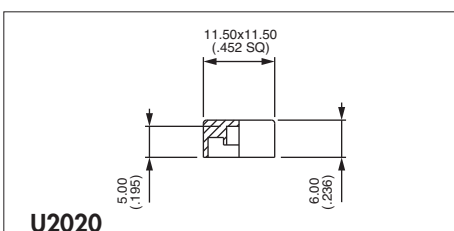
**U480**



**U630**



**U2430**



**U2020**

Square

Square

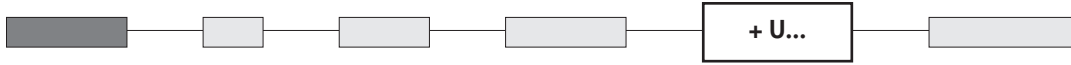
Cap colours			
Replace last "0" by number			
1	blue	5	yellow
1/4	dark blue	6	red
2	black	7	ivory
3	green	7/1	white
4	grey	9	orange



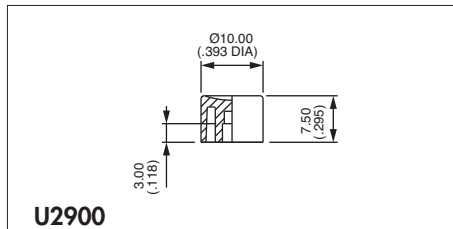
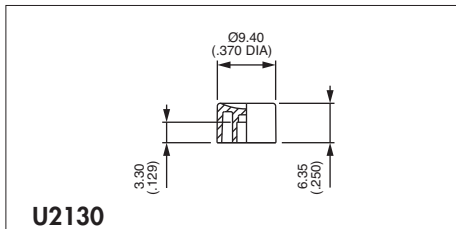
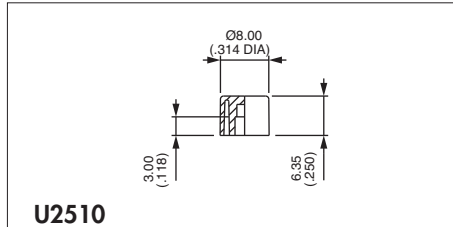
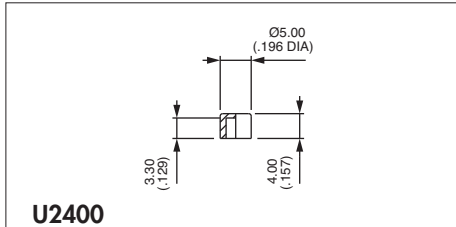
# 18000 series

Snap-action momentary pushbutton switches

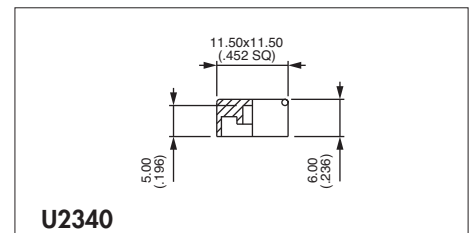
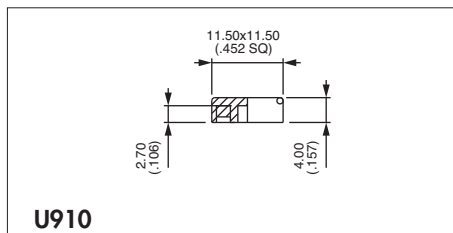
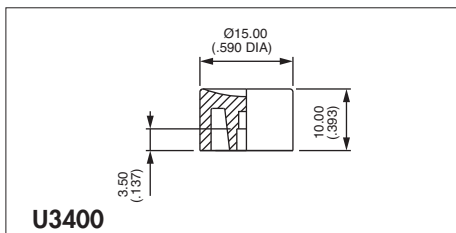
## CAPS (continued)



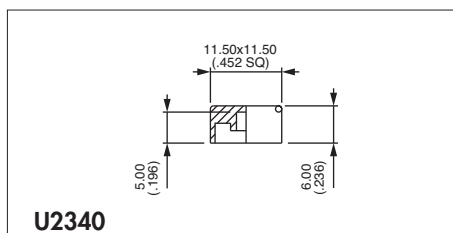
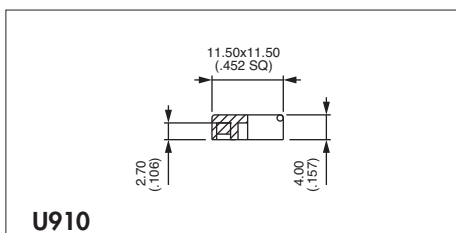
### Caps for Ø 3,1 (.122) plungers (-5, -6)



Cap colours	
Replace "0" by number	
1	blue
1/4	dark blue
2	black
3	green
4	grey
5	yellow
6	red
7	ivory
7/1	white
9	orange



### Caps for 18800 and 18800X662 models





# 18000 series

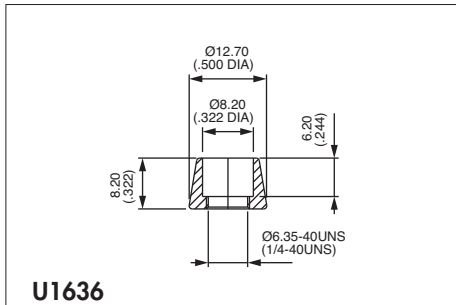
ermec@ermec.com

## Snap-action momentary pushbutton switches

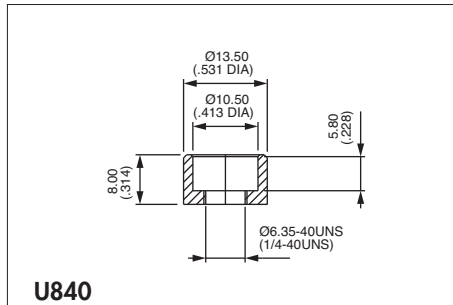
### DRESS NUTS

For models with threaded bushing (18500 - 18700 - 18200 - 18900)

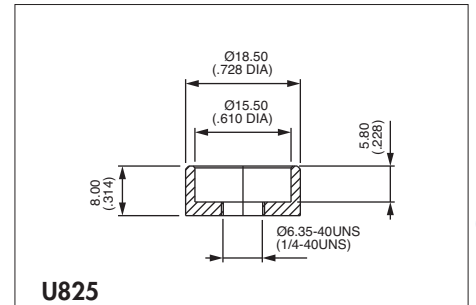
Chrome plated - Order separately.



For caps U1140 and U2510



For cap U480 and U2900

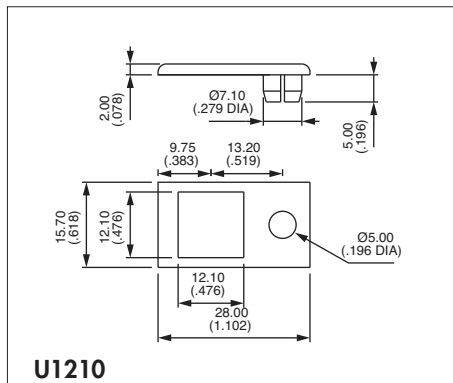
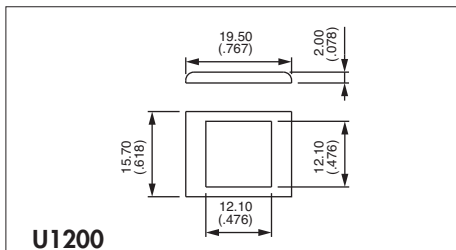


For caps U630 and U3400

### BEZELS



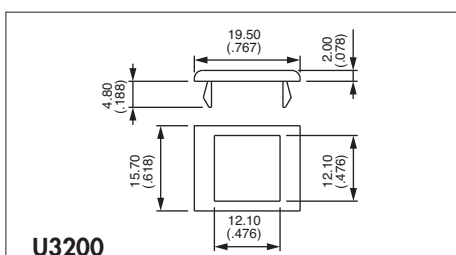
For snap-in models (18800 - 18800X662)



For LED Ø 5 - not supplied

Bezel colours	
Replace last "0" by number	
1	blue
1/4	dark blue
2	black
3	green
4	grey
5	yellow
6	red
7	ivory
7/1	white
9	orange

For bracket mounting models (18200Y & 18200YX624)



**STANDARD PANEL MOUNTING**

Panel thickness with bezel : 1 mm (.039) to 2,5 mm (.098)

**18800 + U910 + U1200**

**18800 + U910 + U1210**



www.ermec.com

# 18000 series

Snap-action momentary pushbutton switches

ermec@ermec.com



For high currents

Tactile feedback

## ELECTRICAL SPECIFICATIONS

- Max. current/voltage rating with resistive load : 7A 30VDC
- Initial contact resistance : 20 m $\Omega$  max. at 0,1A 3VDC
- Insulation resistance : 200.000 M $\Omega$  min. between terminals and frame
- Dielectric strength : 1.500 Vrms 50 Hz min.
- Electrical life : 60.000 cycles at full load

## GENERAL SPECIFICATIONS

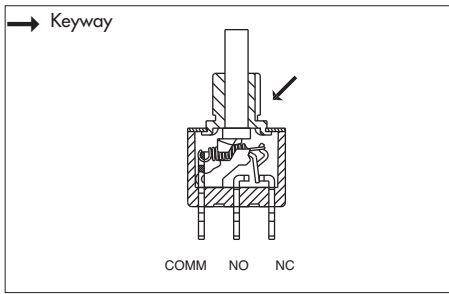
- Travel : 0,90 mm (.035) approx.
- Operating temperature : -30°C to +85°C

## MATERIALS

- Case : diallyphthalate (DAP)
- Actuator : glass filled polyester
- Bushing : brass, nickel plated
- Housing : stainless steel
- Contacts : silver
- Terminal seal : epoxy



www.ermec.com



- Threaded bushing  $\varnothing 6,35$  (1/4)
- Solder lug terminals
- Epoxy sealed terminals

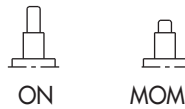
### MODEL STRUCTURE



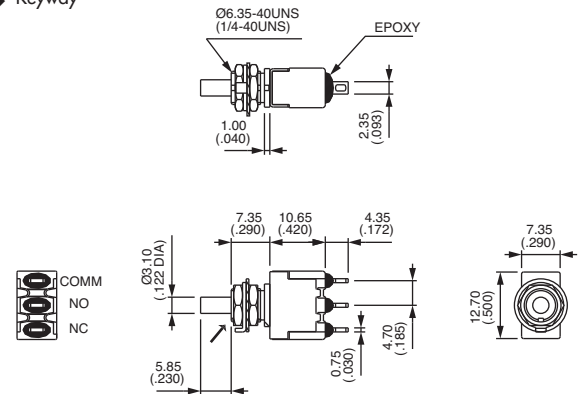
### Single pole



18635A



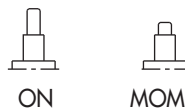
→ Keyway



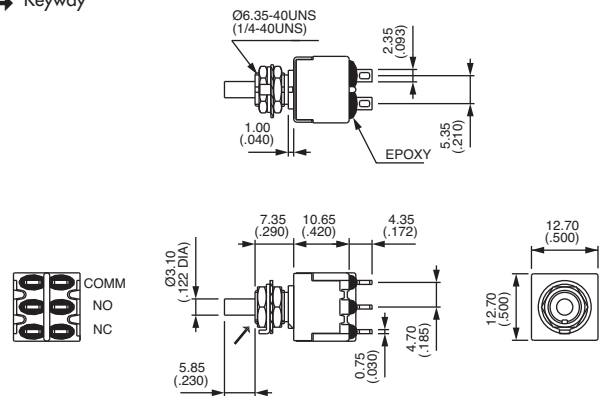
### Double pole



18645A



→ Keyway



### CAPS

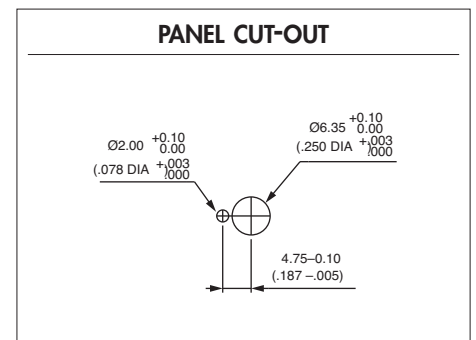


Round

U2400	$\varnothing 5$ (.196)
U2510	$\varnothing 8$ (.314)
U2130	$\varnothing 9,4$ (.370)
U2900	$\varnothing 10$ (.393)
U3400	$\varnothing 15$ (.590)

Square

U910	Height 4 (.157)
U2340	Height 6 (.236)



For cap dimensions, see "Caps for  $\varnothing 3,1$  (.122) plungers" on the preceding pages.

