

## Piezo switches

*Distinctive features - Specifications - Overview*

- Sealed to IP 68 (switches mounted on panel)
- Easy to clean metal surface
- Long life
- Ring or dot illumination

### ELECTRICAL SPECIFICATIONS

- Rated voltage : 5V to 24 VAC/DC max.
- Rated current : 0,2A to 1A max.
- Switch resistance ON : 10Ω max.
- Switch resistance OFF : 5MΩ min.
- Switch capacitance : 25pF
- LED : 20mA 5VDC

### MATERIALS

- Case : aluminium, anodized or stainless steel
- Terminals : multi-wire leads AWG24, length 300 mm (11.81)

#### Standard hardware supplied :

1 hex nut U4116 (19 mm ac. flats) or  
1 hex nut U6440 (25 mm across flats)

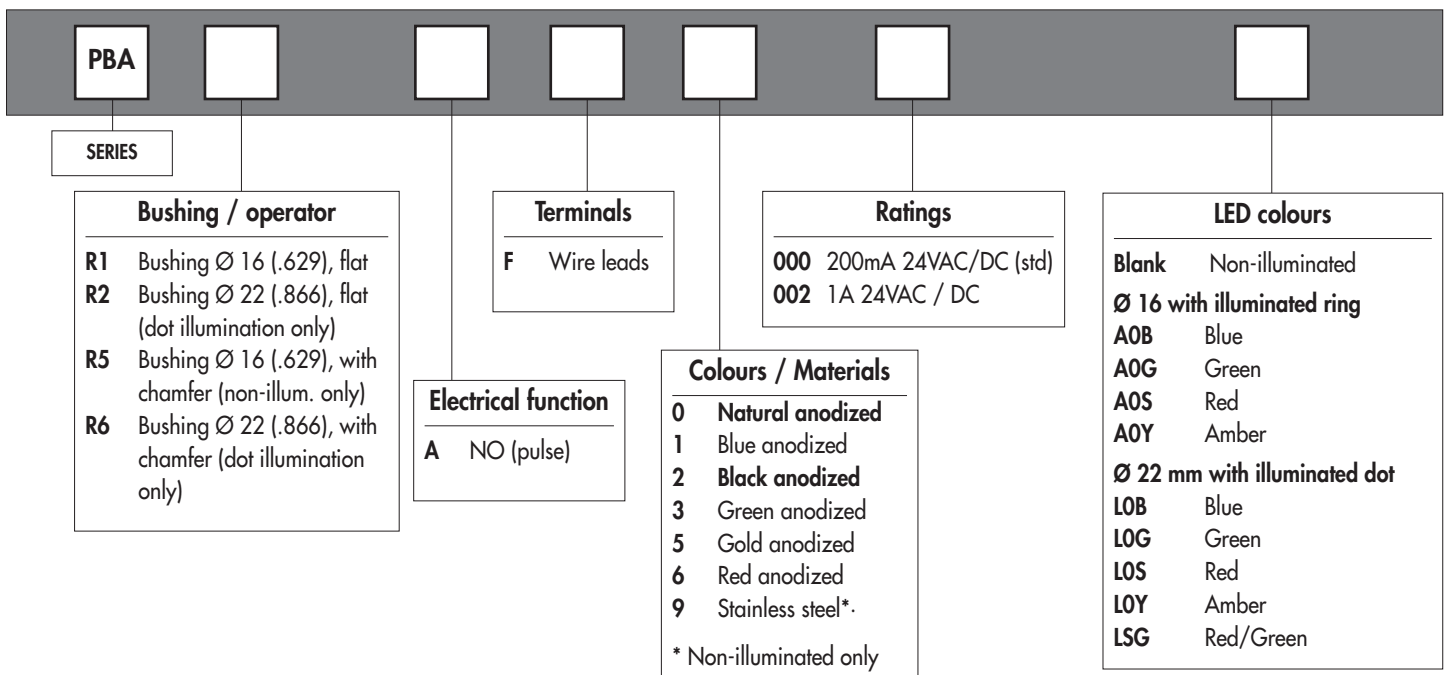
#### Packaging unit :

Bushing Ø 16 (.629) : 40 pieces  
Bushing Ø 22 (.866) : 20 pieces

**Dimensions** : first dimensions are in mm while inches are shown as bracketted numbers.

### GENERAL SPECIFICATIONS

- Operating force : 2 to 6N
- Life expectancy : 50 million cycles
- Operating temperature : -40°C to +75°C
- EMC compatibility according to EN 61058-1 for the whole range
- EMC compatibility according to EN 61000-4 & EN61000-6-2 for model 1A (code 002)
- Sealing : IP 68 per IEC 529 (switches mounted on panel)



**NOTICE** : please note that not all combinations of above numbers are available. Refer to the following pages for further information.

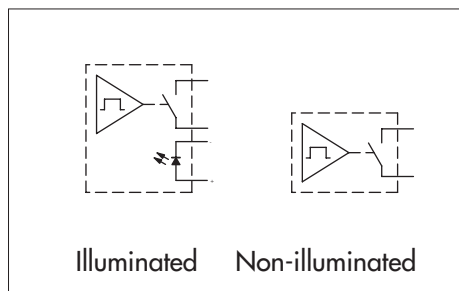


www.ermec.com

# PBA series

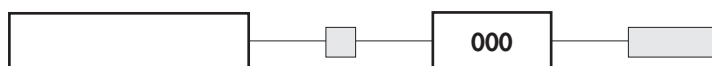
## Piezo switches

Bushing  $\varnothing$  16 (.629) - illuminated and non-illuminated



- Panel cut-out :  $\varnothing$  16,2 mm (.637)
- Operator  $\varnothing$  18 mm (.708)

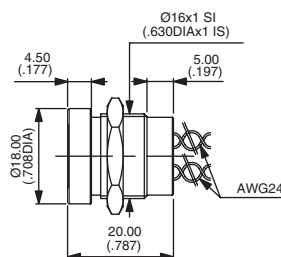
MODEL  
STRUCTURE



### With illuminated ring



Flat operator  
PBAR1AF

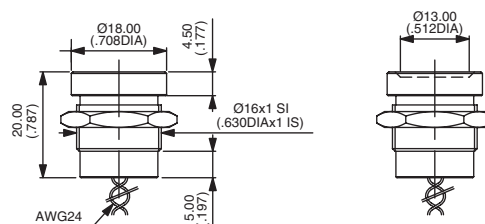


Wire colours : red : contact, yellow : LED anode (+), blue : LED cathode (-)

### Non-illuminated



Flat operator  
PBAR1AF  
With chamfer  
PBAR5AF



### CASE COLOURS / MATERIALS



0 : natural anodized aluminium - 1 : blue anodized alum. - 2 : black anodized alum. - 3 : green anodized alum.  
5 : gold anodized alum. - 6 : red anodized alum. - 9 : stainless steel (non-illum. only)

### LED COLOURS



Blank : non-illuminated

A0B : blue - A0G : green - A0S : red - A0Y : amber



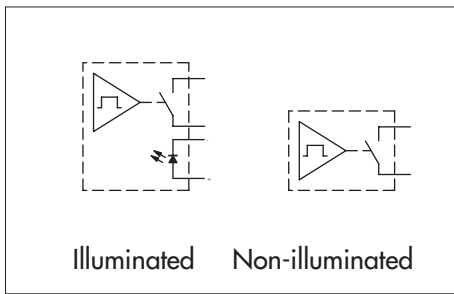
www.ermec.com

# PBA series

ermec@ermec.com

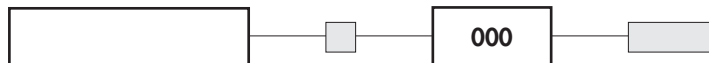
## Piezo switches

Bushing  $\varnothing 22 (.866)$  - illuminated and non-illuminated



- Panel cut-out :  $\varnothing 22,2 \text{ mm} (.874)$
- Operator  $\varnothing 28 \text{ mm} (1.102)$

### MODEL STRUCTURE



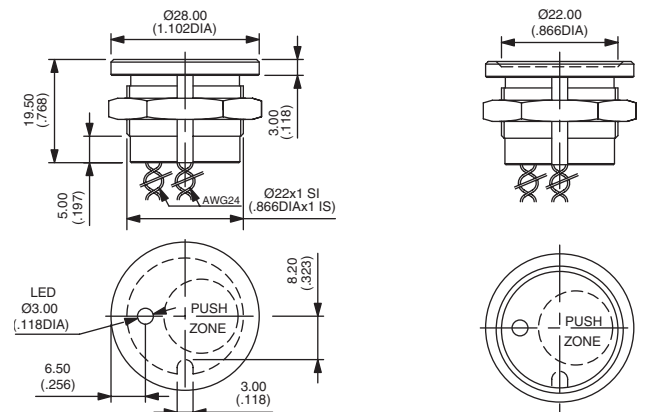
Wire colours : red : contact, yellow : LED anode (+), blue : LED cathode (-)

### With illuminated dot



Flat operator  
**PBAR2AF**

With chamfer  
**PBAR6AF**

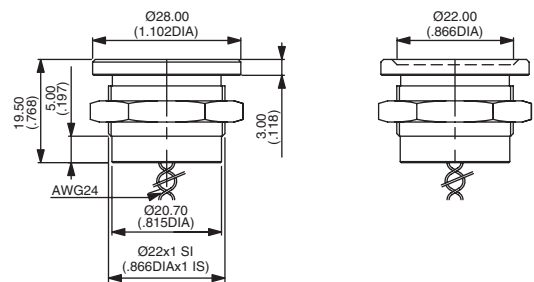


### Non-illuminated



Flat operator  
**PBAR2AF**

With chamfer  
**PBAR6AF**



### CASE COLOURS / MATERIALS



0 : natural anodized aluminium - 1 : blue anodized alum. - 2 : black anodized alum. - 3 : green anodized alum.  
5 : gold anodized alum. - 6 : red anodized alum. - 9 : stainless steel (non-illum. only)

### LED COLOURS



Blank : non-illuminated

LOB : blue - LOG : green - LOS : red - LOY : amber - LSG : red/green



www.ermec.com