

Mellor

THE MOTOR GEAR PEOPLE

Mellor Electrics Ltd
Sett End Road
Shadsworth Business Park
Blackburn, Lancashire
BB1 2NW

t: +44 (0) 1254 53854
f: +44 (0) 1254 678625
e: sales@mellorelectrics.co.uk
www.mellorelectrics.co.uk



AC & DC
Motors &
Geared Motors

t: +44 (0) 1254 53854
www.mellorelectrics.co.uk

At Mellor Electrics we are constantly striving to advance and improve in all areas of our field.

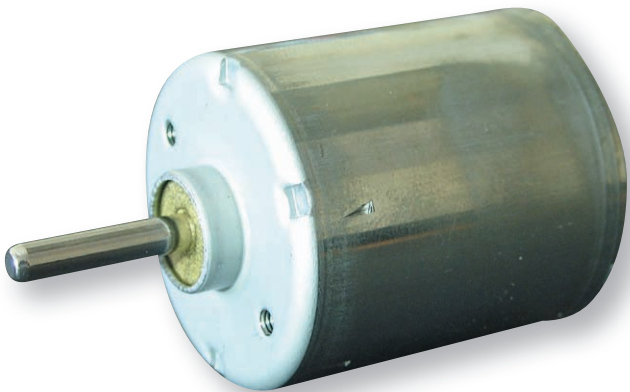
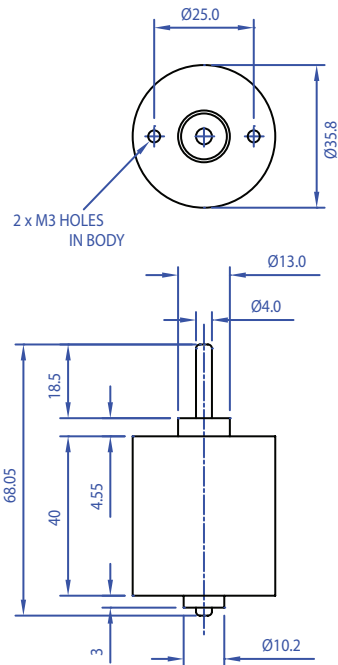
We have recently invested in the latest technology with a fully automatic Koepfer CNC gear cutting machine. The model 160 hobbing machine combines current technological developments and an innovative design along with many generations of gear cutting experience. With eight axis of CNC control the latest generation 160 gear hobbing machine opens new possibilities for true high speed machining of precision gears.

Another major investment is our cutting edge CNC milling machine. The model XYZ 710 allows us to ensure our gearboxes have the pin centers machined with precision to overcome the tolerance issues with standard castings. By giving us this precision it allows the gears to be precisely located within the gearbox to ensure that the noise level is kept to a minimum when the gearmotor is running. We are now equipped to offer the highest quality and lowest noise levels of gearmotors for our customers.

In addition, here's a sample of products currently being tested for launch this year...

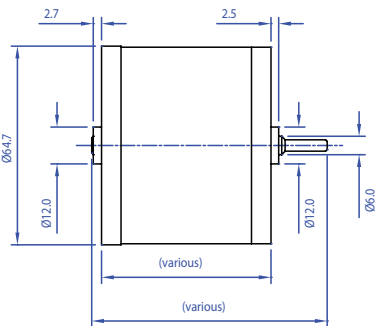
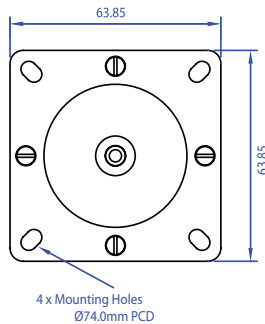
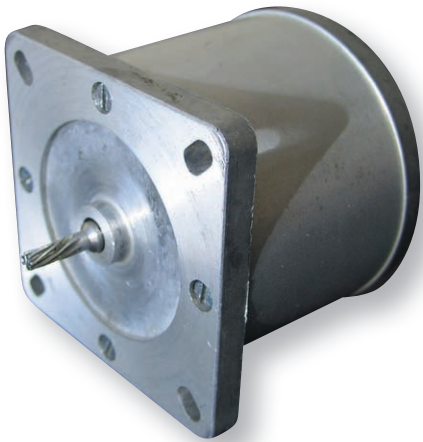
Brushless Unit

- Low Cost and Compact Brushless DC Motor with fully integrated electronics
- 3 wire option for clockwise / counter clockwise rotation
 - 6 wire option offering speed control, braking and reversibility



Synchronous Unit

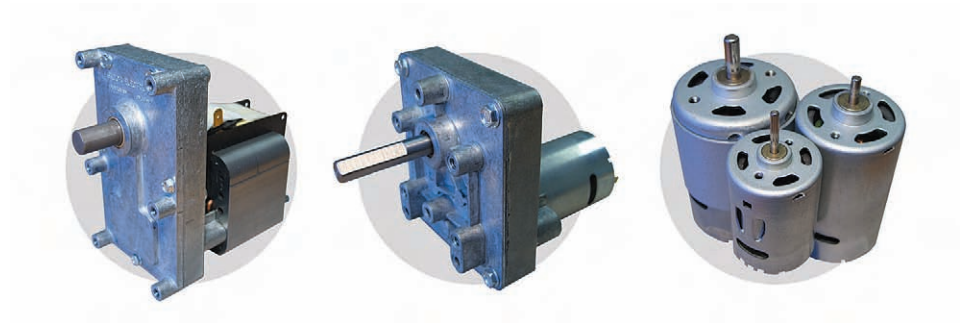
- Reversible Synchronous Motor
- 1,000 RPM up to 1,800gm/cm
- This high powered new addition will complement our existing range of synchronous motors.



ermec@ermec.com

Mellor

THE MOTOR GEAR PEOPLE



Profile	4
AC Motors	5
DC Motors	6
T2 AC Geared Motor	7
T3 AC, T3 Synchronous, T11 AC Geared Motors	8
T3 DC, T3 Brushless DC, T11 DC Geared Motors	9
T4 AC, T4 DC Geared Motors	10
T5 DC Geared Motors	11
T6 AC, T6 Synchronous Geared Motors	12
T6 DC, T6 Brushless DC Geared Motors	13
T7 AC Geared Motors	14
T10 DC Geared Motors	15
T12 Synchronous Geared Motors	16
T14 AC Geared Motors	17
Tables 1	18
Tables 2	19

About Us

As one of the world's leading motor/gearbox manufacturers, Mellor Electrics deals with companies as far afield as North America, Australia and Japan. It is vital our product remains reliable, consistent and accurate throughout its working life. To achieve this goal we keep the majority of our processes in-house, thereby maintaining total control of all aspects of production. Our CNC turning and hobbing machines offer levels of accuracy which, when combined with our CAD facilities and computerised testing equipment, allow us to offer unrivalled quality and service.

Originally founded in 1964, Mellor Electrics has constantly grown and evolved to meet the needs of the customer. Extensive investment in human resources and modern machinery has enabled us to offer flexibility in all areas of our business. We operate from a custom built, 2600 square metre factory which affords us the space we need to offer stock holding and kanban facilities to our customers.

With approval to BS EN ISO9001:2000 and as a UL recognised manufacturer, we pride ourselves on our ability to meet customer requirements and exceed expectations.

The Products

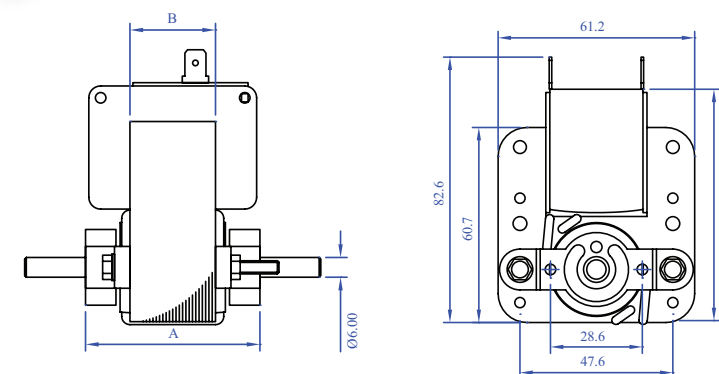
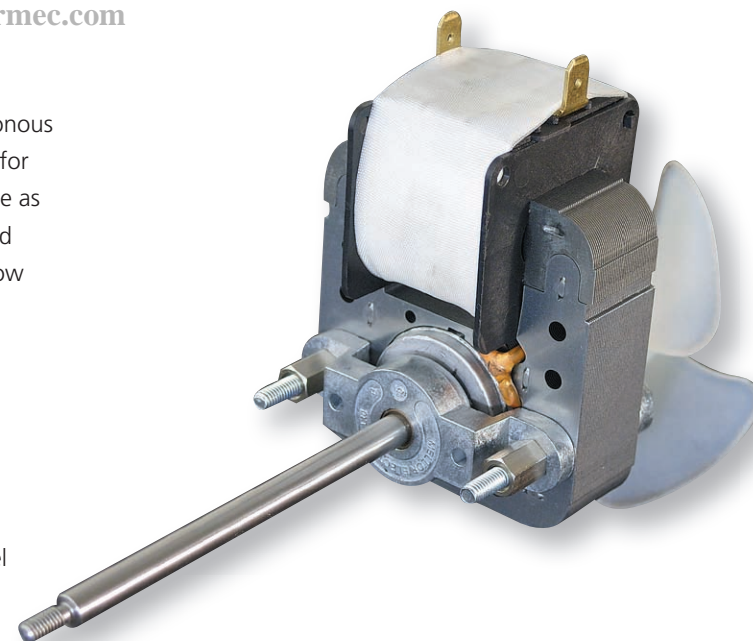
The Mellor Electrics range comprises of the SC9 Asynchronous Shaded Pole & SY synchronous AC, FRS Brushed Permanent Magnet and BD Brushless DC motors that can be fitted to our range of gearboxes. Our products are suitable for a vast array of applications and have so far been used in vending machines, pellet burning stoves, pumps, catering equipment, animated displays, scientific equipment and other applications too numerous to mention.

All our motor gearbox units are lubricated for life and many features such as shaft length and diameter can be modified to suit each application. Our in-house design and engineering facilities allow us to tailor our product to your needs and we are happy to discuss any special requirements with the customer.

SC9 AC Series Motors

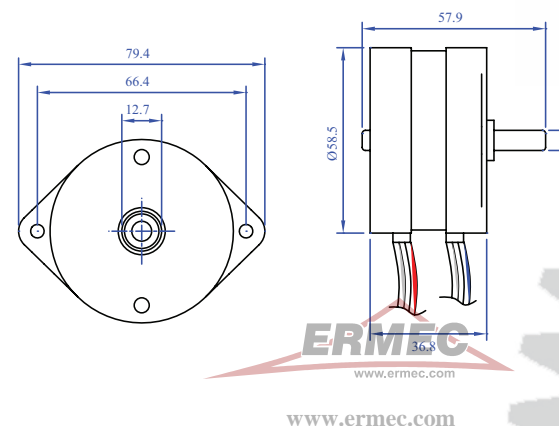
At the heart of the Mellor Electrics AC range is the SC9 single phase asynchronous shaded pole motor, the motive power for our AC motor/gearboxes. Also available as a motor only unit, this dependable and consistent performer offers long life, low cost and quiet running.

- Available in six stator heights 13mm - 50mm
- Lubricated for life
- Sintered or ball-race bearings
- 6mm diameter precision ground steel shaft (stainless steel available)
- Voltage range 24v to 415v AC - Insulation to class B as standard, Class F & Class H available
- Impedance, re-setting or non re-setting thermal protection
- 6.35mm male tab, flying lead terminations, or bespoke harnesses available



SY Synchronous AC Unit

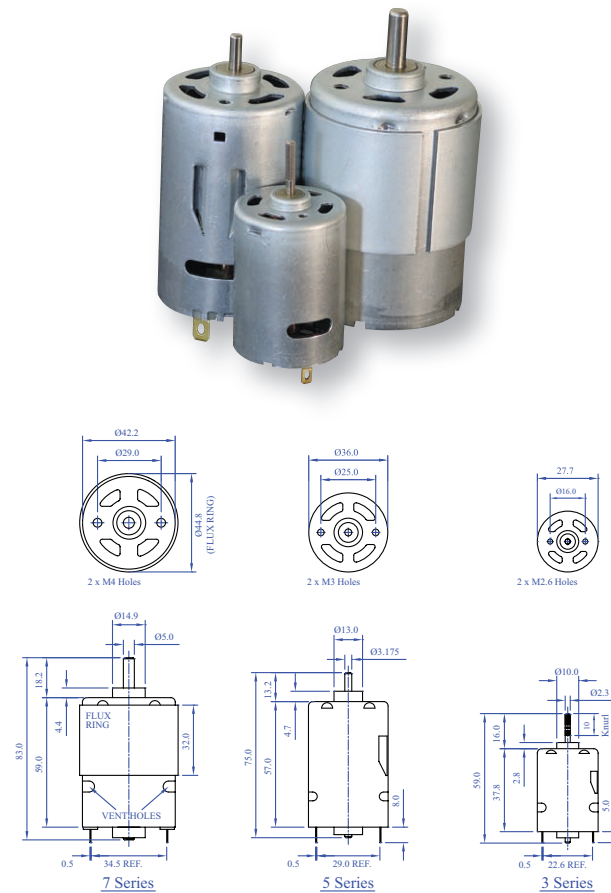
- Reversible AC motor to suit many applications.
- Excellent torque characteristics
- Instantaneous start/stop
- Reliable starting and directional stability
- Virtually silent running for noise sensitive environments.
- High quality engineering ensures a quiet and long running life.



FRS DC Series Motors

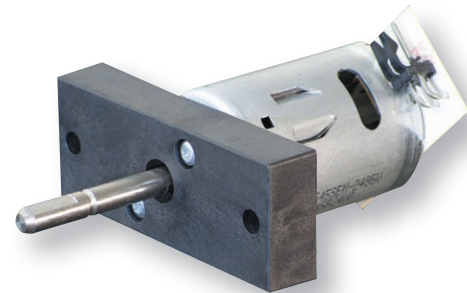
The FRS series of DC permanent magnet field motors are available in three can sizes, 3, 5 & 7 series, 12 or 24 volts and a variety of speeds. These efficient, high quality motors are suitable for continuous operation and can be supplied on their own or fitted with a wide range of gear boxes.

- Carbon brushes
- Hardened steel shaft
- Lubricated for life sintered bearings
- Life up to 3000 hrs - depending on usage
- Terminated to solder tabs, connection PCB or flying leads
- Fitted with internal suppression to meet EMC directives



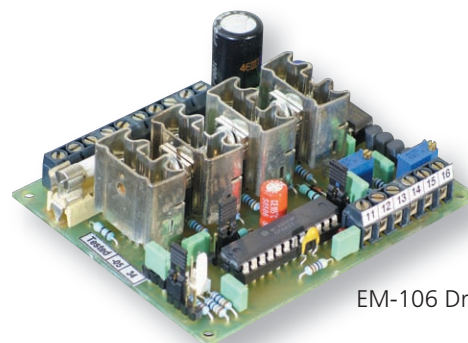
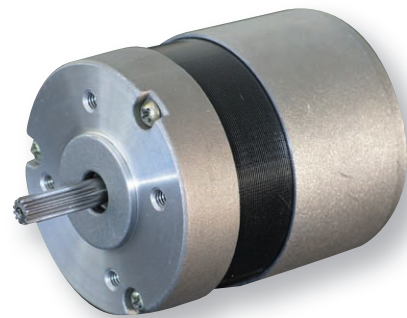
FRSW Series

Designed as a cost-effective replacement for bulky AC vending whipper motors, the FRSW series is available with a wide range of stainless steel shafts. Speeds of 10,000, 12,500, 14,000 and 17,000rpm are standard, as are connector PCBs or flying leads and an adaptor that allows direct connection to currently available whipper chambers.

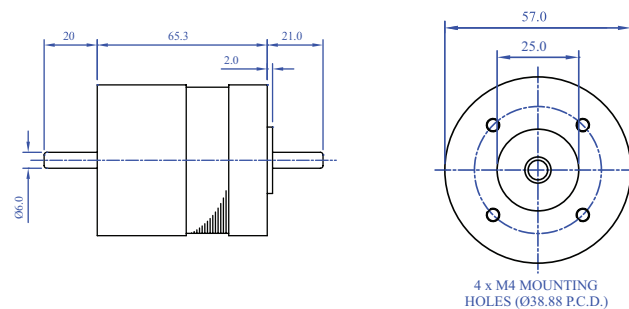


BD Brushless DC Motor

Brushless technology gives extended life and quiet operation compared to traditional brushed DC motors. The motor can be speed controlled with the EM-106 drive board to give input speeds ranging from 0 - 2,500rpm.



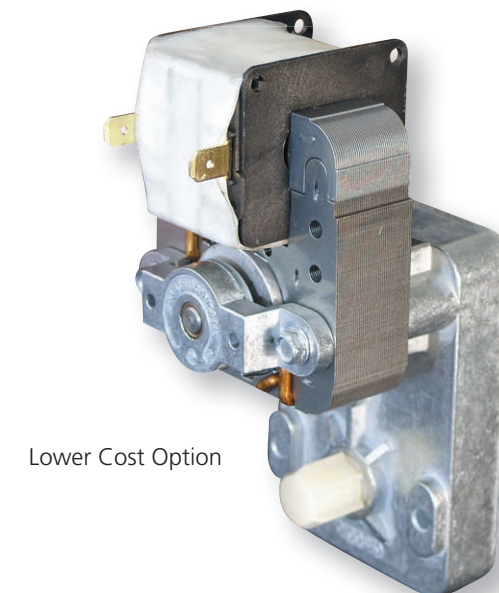
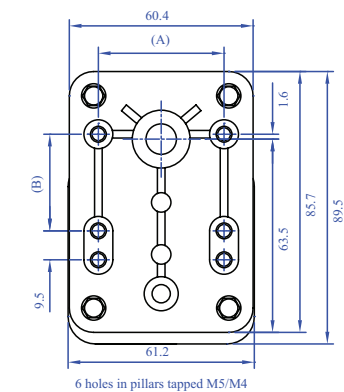
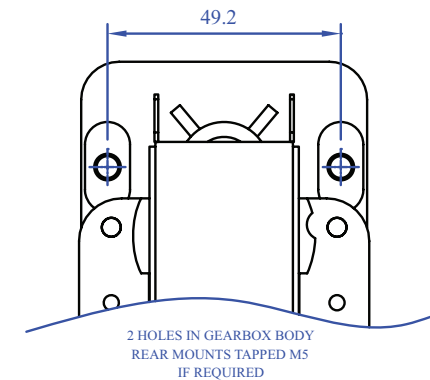
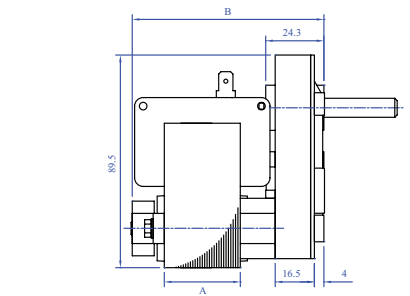
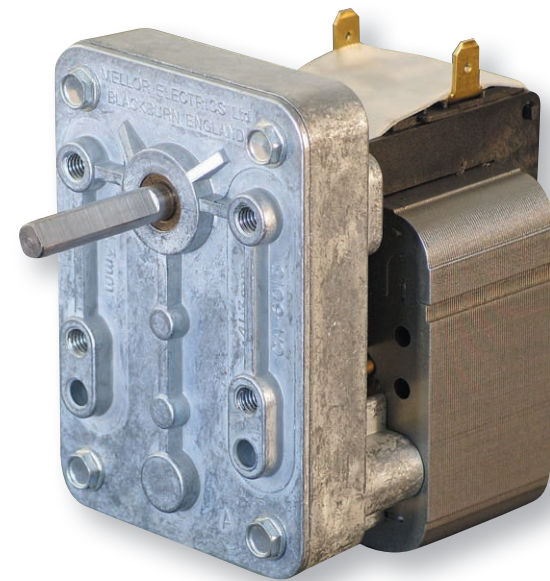
EM-106 Drive Board



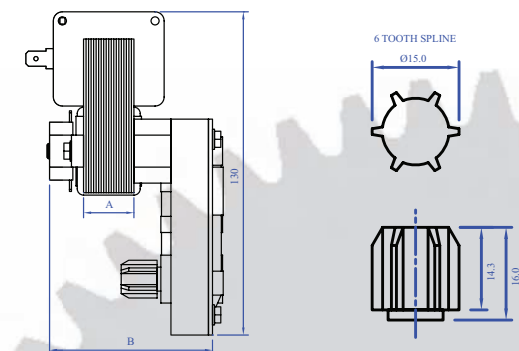
EB - T2 AC Series Geared Motor Units

A compact and versatile unit, the EBT2 is available in a variety of configurations and can be supplied with sintered bronze or ball race output bearings. As a lower cost option we also offer this unit with a moulded plastic gear-train and a plastic output shaft design to mate with a variety of vending canister systems.

- Available with an AC SC9 motor
- Output Torque: Up to 4Nm depending on speed and motor size
- Speed Range: 20 to 325rpm

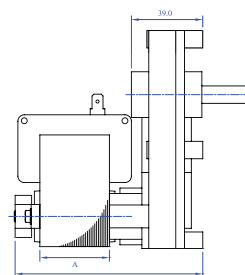
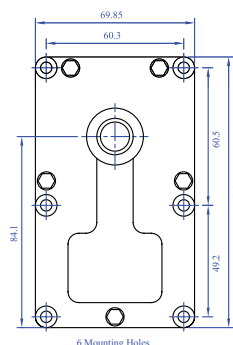
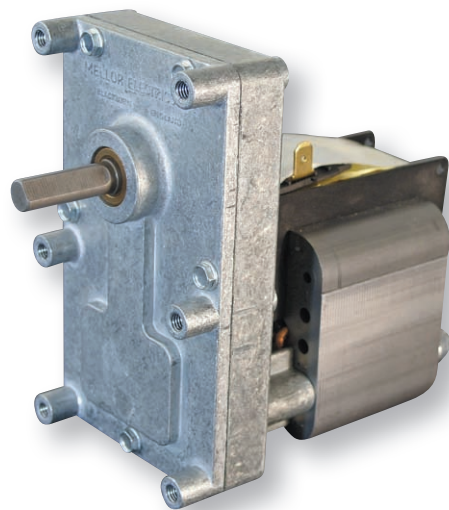


Lower Cost Option



FB / FBSY / FBD / FBBD T3 Series Geared Motor Units

The heavyweight of our range, the FBT3 is a low speed, high torque unit designed with pellet fired appliances and fresh brew vending systems in mind, although it is equally suited for many other applications. High quality engineering ensures a quiet and long running life. Available with SC9 AC, Synchronous AC, DC and Brushless DC versions to suit a wide range of applications. Output shaft length and diameter to suit individual customer requirements.

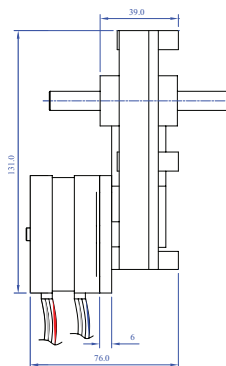


FB - T3 AC Series

- Available in 5 motor sizes (19mm - 50mm)
- Output Torque: Up to 35Nm, depending on speed and motor size
- Speed Range: 0.8 - 50rpm

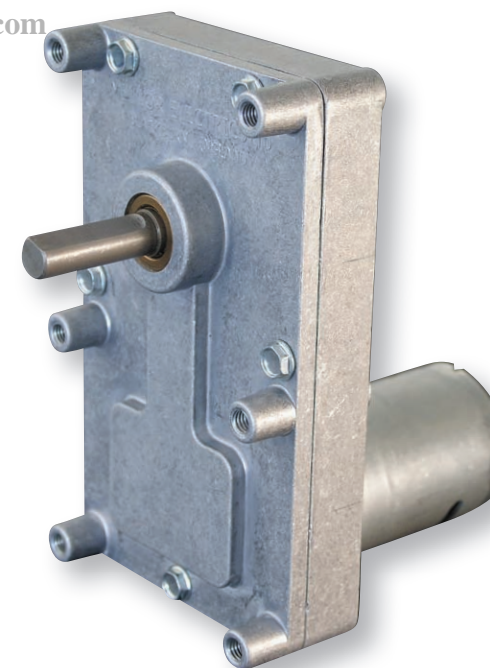
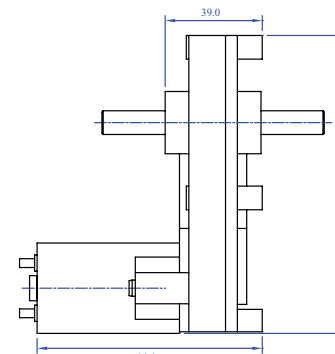
FBSY - T3 AC Synchronous Series

- Output Torque: Up to 15Nm depending on speed
- Speed range: 0.5 - 5.5rpm



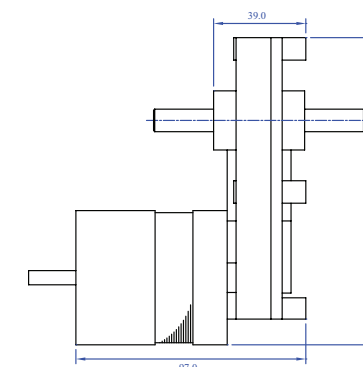
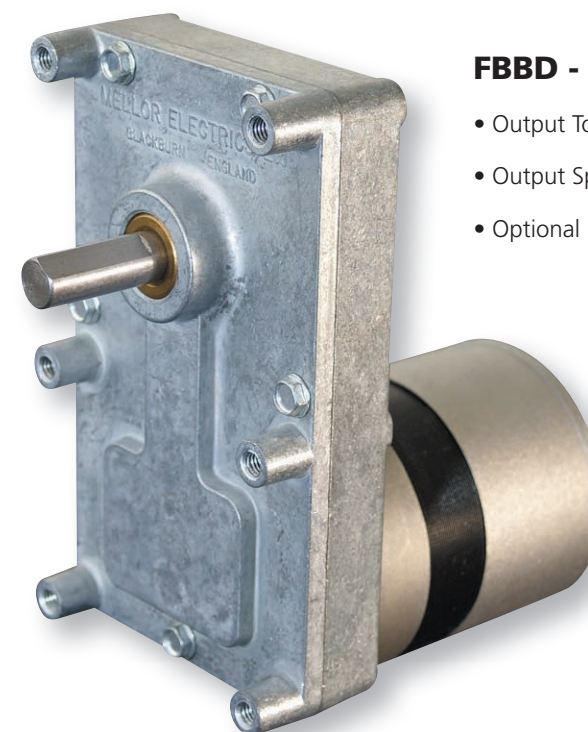
FBD - T3 DC Series

- Available with a 5 or 7 series FRS-DC motor
- Output Torque: Up to 35Nm depending on speed and motor size
- Speed range: 3.5 - 50rpm



FBBD - T3 DC Brushless Series

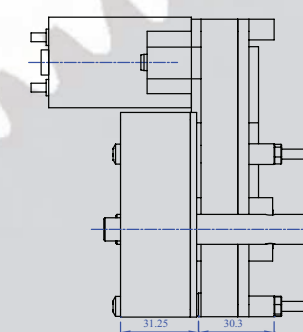
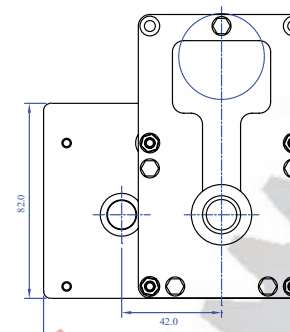
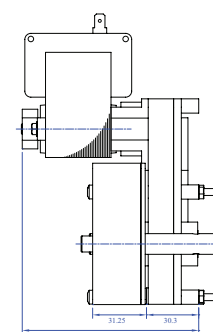
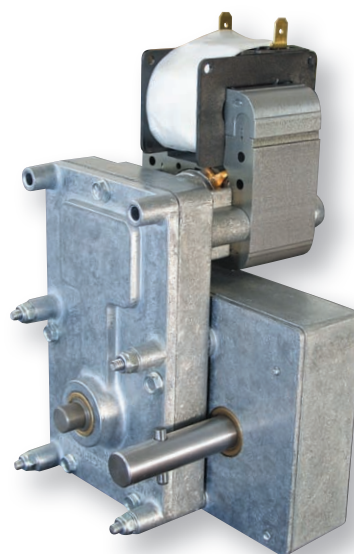
- Output Torque: Up to 35Nm depending on speed
- Output Speed range: 0 - 50rpm
- Optional integrated electronic drive card



HT / HTD T11 Series High Torque Units

The FB T3 can be fitted with an additional external gearbox. This produces a unit that can give extremely slow rpm and very high torque.

- Available in AC (HT) and DC (HTD) versions
- Output Torque: Up to 50Nm depending on speed and motor size
- Speed Range: 0.35 - 22rpm AC / 1.5 - 22rpm DC



ERMEC
www.ermec.com

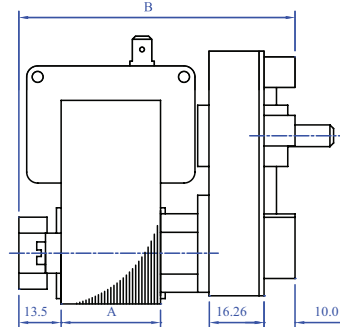
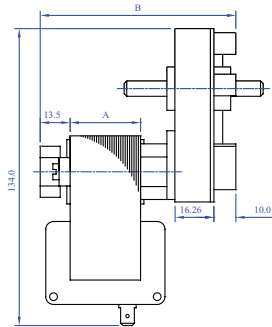
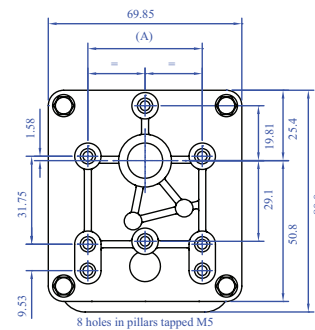
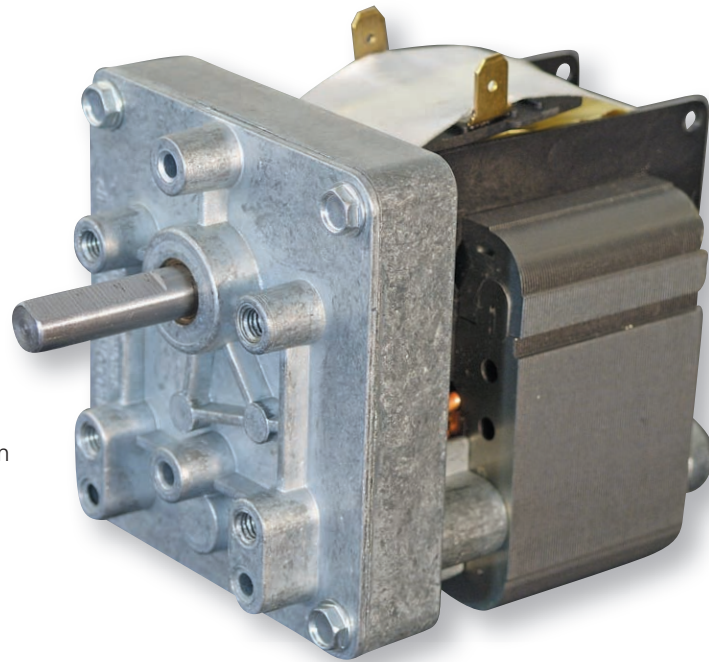
www.ermec.com

t: +44 (0)1254 53854
www.melloelectrics.co.uk

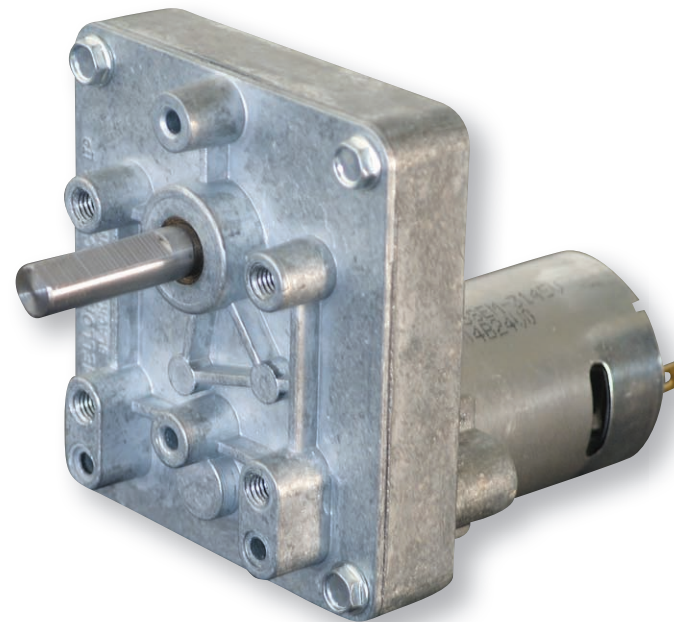
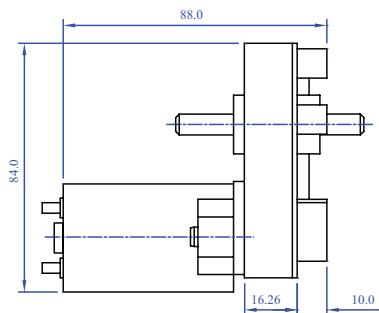
CB/CBD T4 Series Geared Motor Units

Used extensively in chemical pumping and dosing applications, the CBT4 has a compact design which makes it ideal for mounting inside small enclosures.

- Available with an AC SC9 motor in 5 stator stack sizes
- Available with a 5 series DC motor (see FRSDC section for details)
- Output Torque: Up to 4Nm depending on speed and motor size
- Speed Range: 30 to 325rpm



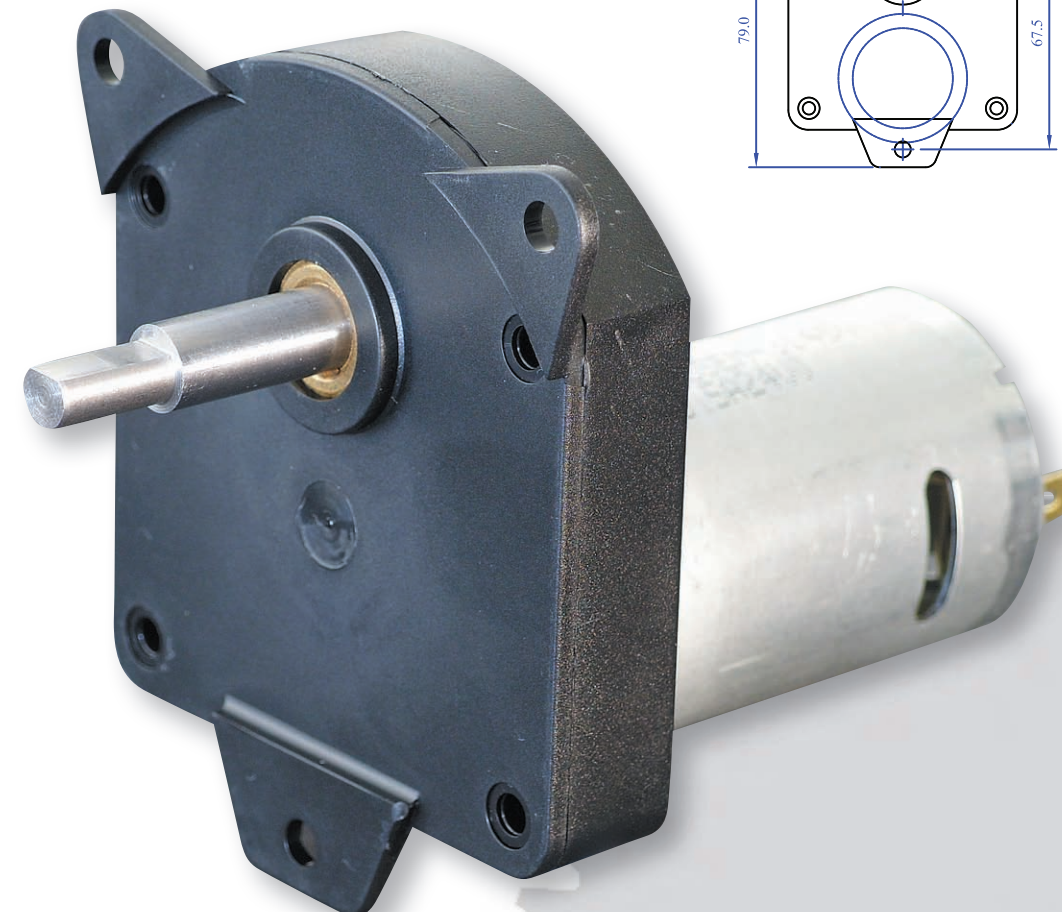
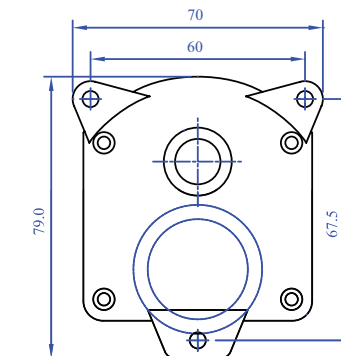
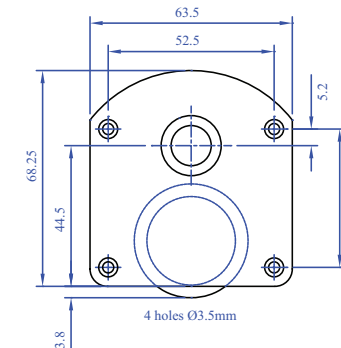
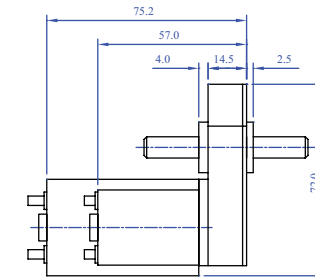
CBD - T4 DC Series



GBD - T5 DC Series Geared Motor Units

This versatile plastic bodied motor gearbox is slim-line and lightweight. Designed with the product engineer in mind, this unit is ideal for applications where space is at a premium but quality cannot be compromised.

- Available with a 3 or 5 series DC motor (see FRS DC section for details)
- Output Torque: Up to 2Nm depending on speed and motor size
- Speed Range: 50 to 325rpm

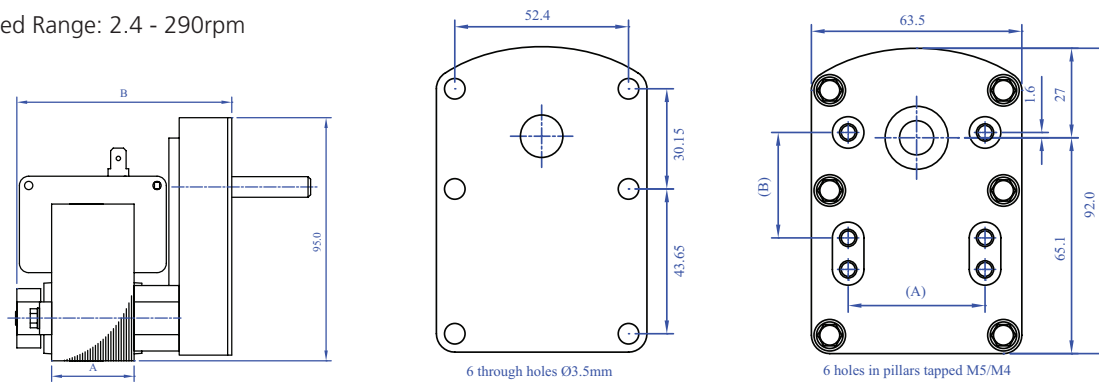


UB/UBSY/UBD/UBBD T6 Series Geared Motor Units

Our most versatile offering, the UBT6 series is available with four different lid options to suit a wide range of mountings. Used extensively in pumps, vending machines and animated displays, this unit is the perfect solution for any application that requires a quiet, robust and reliable gearbox. Available with SC9 AC, Synchronous AC, DC and Brushless DC versions. Output shaft length and diameter to suit individual customer requirements.

UB - T6 AC Series

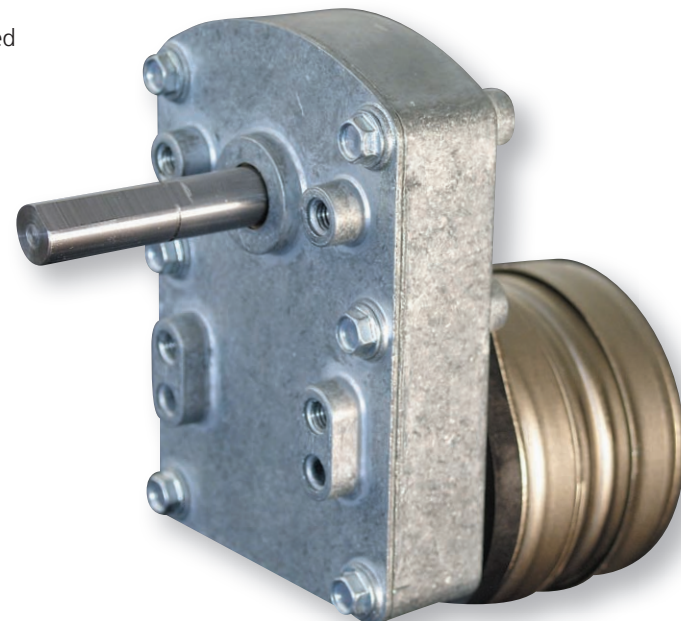
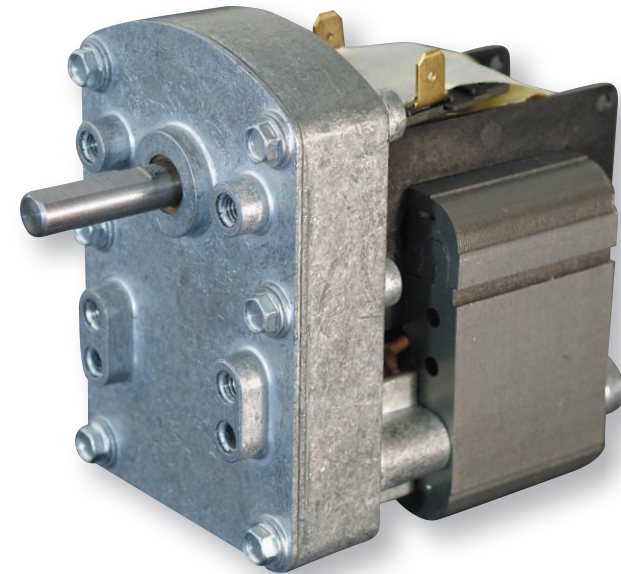
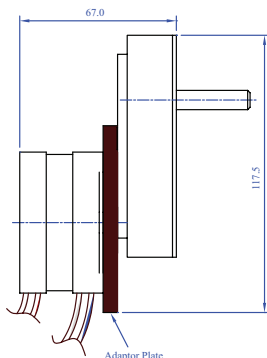
- Available with an AC SC9 motor in 6 stator stack sizes
- Output Torque: Up to 8Nm depending on speed and motor size
- Speed Range: 2.4 - 290rpm



UBSY - T6 AC Synchronous Series

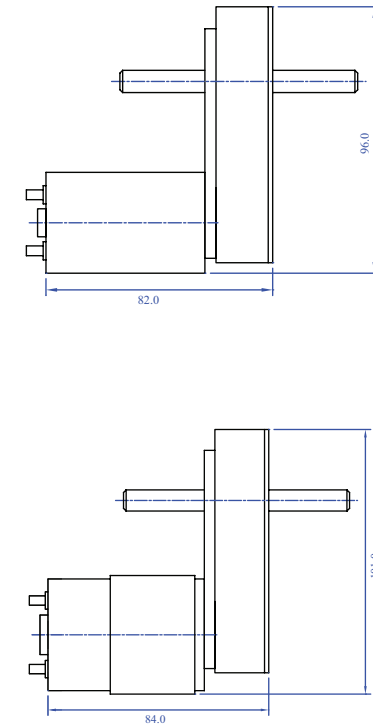
A reversible AC motor to suit many applications. Virtually silent running motor to suit noise sensitive environments. High quality engineering ensures a long running life.

- 230v 50Hz AC
- Output Torque: Up to 8Nm depending on speed
- Speed range: 0.4 - 25rpm



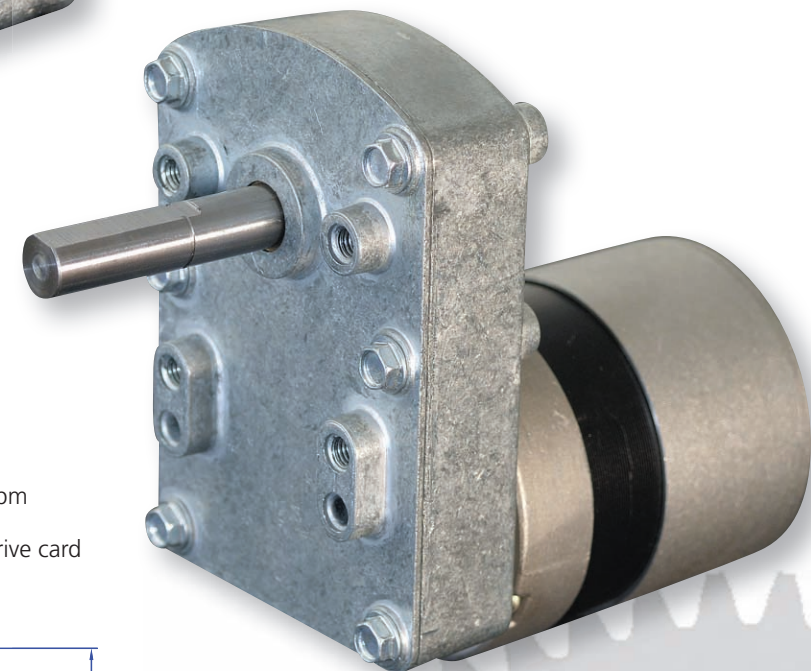
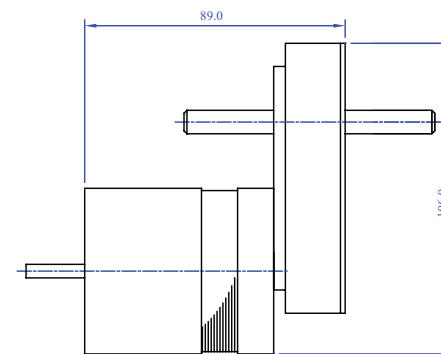
UBD - T6 DC Series

- Available with a 5 or 7 series DC motor (see FRSDC section for details)
- Output Torque: Up to 8Nm depending on speed and motor size
- Speed range: 4 - 425rpm



UBBD - T6 DC Brushless Series

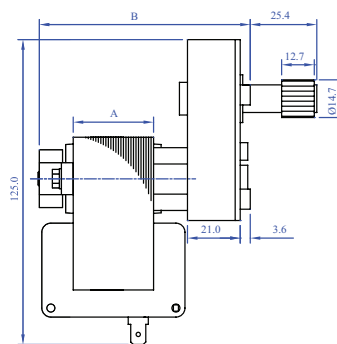
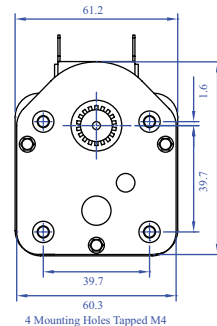
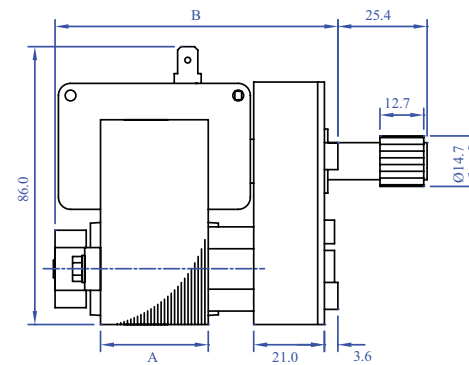
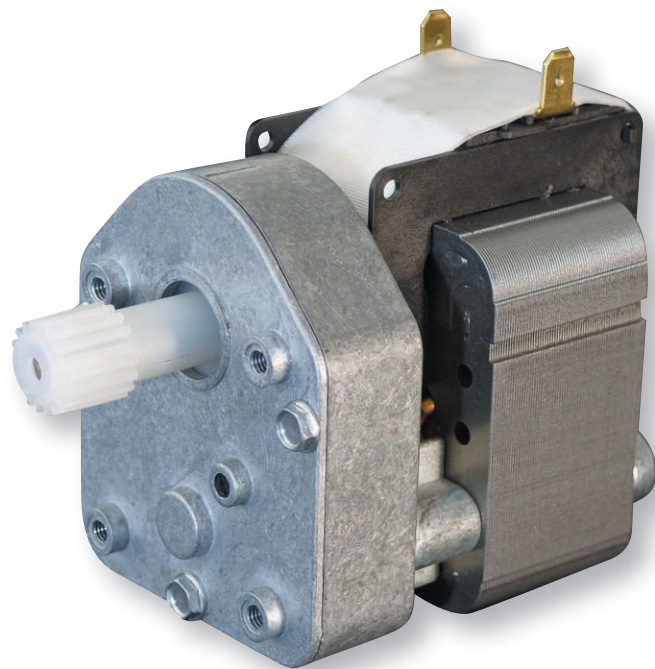
- 12 - 36v DC
- Output Torque: Up to 8Nm depending on speed
- Output Speed range: 0.8 - 250rpm
- Optional integrated electronic drive card



JB - T7 AC Series Geared Motor Units

This geared motor unit was specifically designed for use with canister dispensing systems. The output is a 14.7mm diameter 18 tooth spline which will mesh with all the popular makes of ingredient canisters. The final drive gear is an integral moulding with the output spline which rotates on a ground steel shaft thus negating the need for bearings and providing long life and quiet, reliable operation. The speeds offered are limited to 80 and 140rpm, this enables us to produce the unit at a very competitive price.

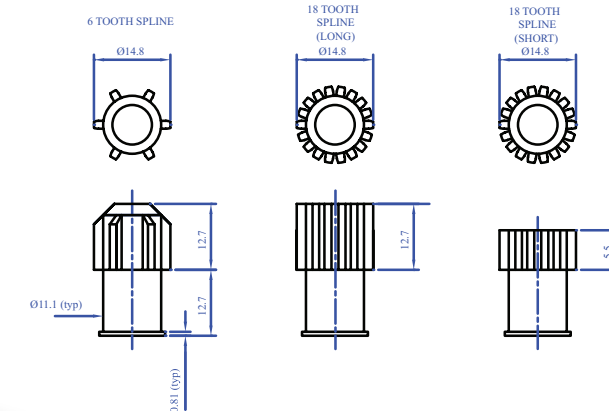
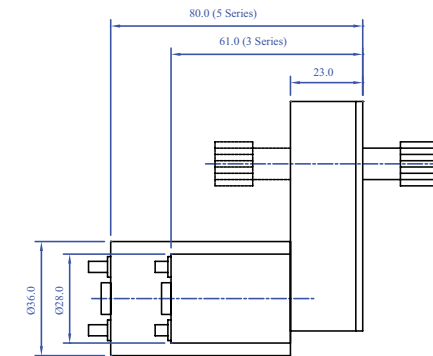
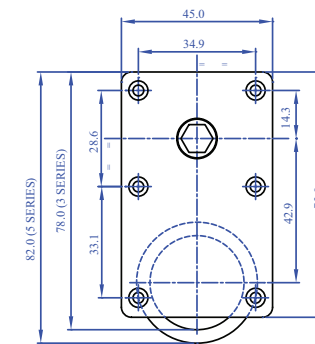
- Available with an AC SC9 motor in 5 stator stack sizes
- Output Torque: Up to 1Nm depending on speed and motor size



MB - T10 DC Series Geared Motor Units

Featuring moulded plastic gears and housing, the MBT10 series unit provides a low cost alternative to standard metal motor gearboxes. The system has been designed on a modular basis to provide maximum versatility - two motors for different torques, choice of gears for three ratios and three different hex plug-in output shafts which can be front or rear mounted.

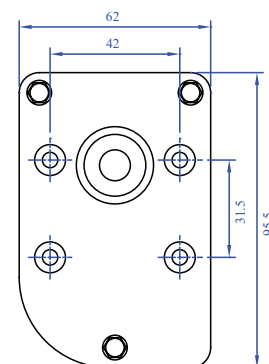
- Available with a 3 or 5 series DC motor (see FRS DC section for details)
- Output Torque: Up to 1Nm depending on speed and motor size
- Speed Range: 80, 120, 140 or 160rpm



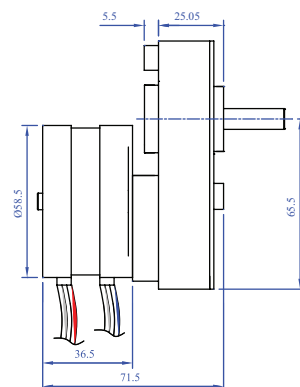
IBSY - T12 AC Synchronous Geared Motor series

Designed originally for the OEM pump market where a long life, quiet running and an efficient motor was required, this unit can also be used in a variety of other applications.

- 230V Ac Synchronous motor
- Reversible
- Low running costs
- Quiet operation
- Speed range 50-100rpm
- Output torque: Up to 8Nm



4 Mounting positions tapped M5

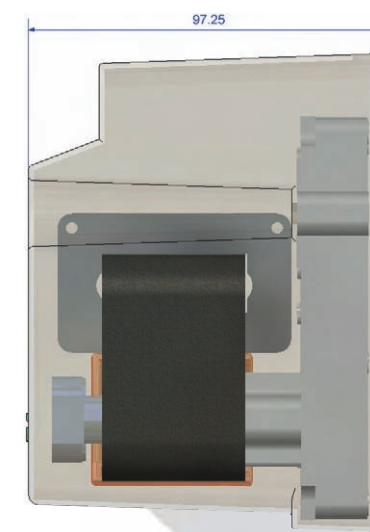
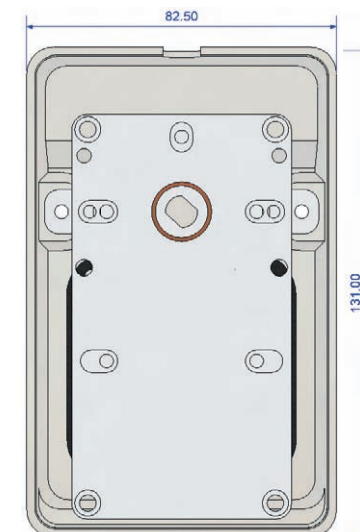
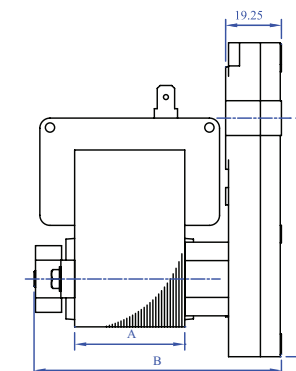
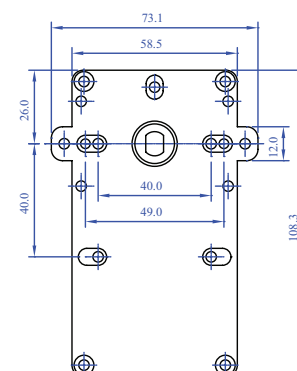
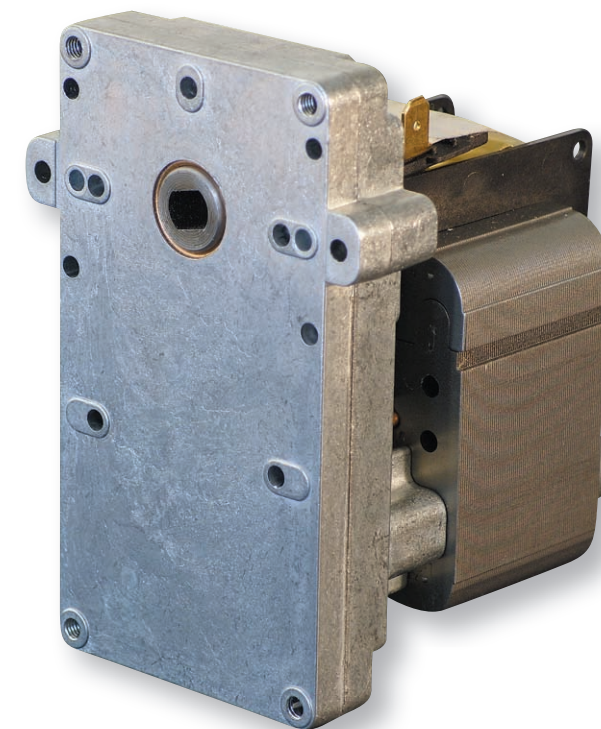


KB - T14 AC Series Geared Motor Units

ermec@ermec.com

This geared motor was originally designed to complement our range between the FBT3 and UBT6. Designed with a slimline gearbox but with high torque capability allowing this unit to be used in many applications where space is limited but a high torque is required. Can be used with our protective plastic cover (as shown below right) designed specifically for this unit. Typical applications include pellet stoves, vending and actuation.

- Available with an AC SC9 motor in 6 stator stack sizes
- Output Torque: Up to 20Nm depending on motor size
- Hollow output wheel for interchangeable shafts
- Speed Range: 5rpm



SC9 SERIES MOTORS							
Cat no.	A	B	Weight (kg)	Rating	Starting Torque	Torque kg/cm	Input watts
SC9 50	41	13	0.45	CONT. INT.	74 90	83 140	15 30
SC9 75	47	19	0.624	CONT. INT.	106 140	125 245	19 38
SC9 100	54	26	0.794	CONT. INT.	136 260	168 340	24 48
SC9 125	60	32	0.964	CONT. INT.	170 323	208 400	30 60
SC9 150	66	38	1.14	CONT. INT.	205 390	240 475	35 70
SC9 200	79	51	1.39	CONT. INT.	250 470	290 560	60 120

EB T2 SERIES MOTORS		
Cat no.	A	B
EBS/EBL50 T2	13	62
EBS/EBL75 T2	19	68
EBS/EBL100 T2	26	74
EBS/EBL125 T2	32	81
EBS/EBL150 T2	38	87

CB T4 SERIES MOTORS		
Cat no.	A	B
CBS/CBL50 T4	13	70
CBS/CBL75 T4	19	76
CBS/CBL100 T4	26	83
CBS/CBL125 T4	32	89
CBS/CBL150 T4	38	95

UB T6 SERIES MOTORS		
Cat no.	A	B
UBS/UBL50 T6	13	65
UBS/UBL75 T6	19	71
UBS/UBL100 T6	26	78
UBS/UBL125 T6	32	84
UBS/UBL150 T6	38	90
UBS/UBL200 T6	51	103

EB T2, CB T4 & UB T6 SERIES LIDS		
Lid	A	B
NARROW	39.7	31.75
WIDE	41.3	31.75
42mm	42.0	31.5

FB T3 SERIES MOTORS		
Cat no.	A	B
FBS/FBL75 T3	19	84
FBS/FBL100 T3	26	91
FBS/FBL125 T3	32	97
FBS/FBL150 T3	38	103
FBS/FBL200 T3	51	116

HT T11 SERIES MOTORS		
Cat no.	A	B
HTS75 T11	19	84
HTS100 T11	26	91
HTS125 T11	32	97
HTS150 T11	38	103
HTS200 T11	51	116

FRS/FRSW DC MOTORS							
Cat no.	A	B	C(Ø)	D(Ø)	E(Ø)	F	Screw Holes
FRS-380	37.8	59	27.7	10	2.3	16	M2.6
FRS-545	50	72	35.8	13	3.175	25	M3
FRS-555	57	75	36	13	3.175	25	M3
FRS-700	59	83	44.8	14.9	5	29	M4

Stack Size (mm)						
Cat no.	13	19	26	32	38	51
CBS/CBL T4	70	76	83	89	95	
EBS/EBL T2	62	68	74	81	87	100
FBS/FBL T3	78	84	91	97	103	116
HTS T11	78	84	91	97	103	116
JBL T7	64	70	77	83	89	
KBL T14	60	66	73	79	85	98
UBS/UBL T6	65	71	78	84	90	103

JB T7 SERIES MOTORS		
Cat no.	A	B
JBL50 T7	13	64
JBL75 T7	19	70
JBL100 T7	26	77
JBL125 T7	32	83
JBL150 T7	38	89

KB T14 SERIES MOTORS		
Cat no.	A	B
KBL50 T14	13	60
KBL75 T14	19	66
KBL100 T14	26	73
KBL125 T14	32	79
KBL150 T14	38	85
KBL200 T14	51	98