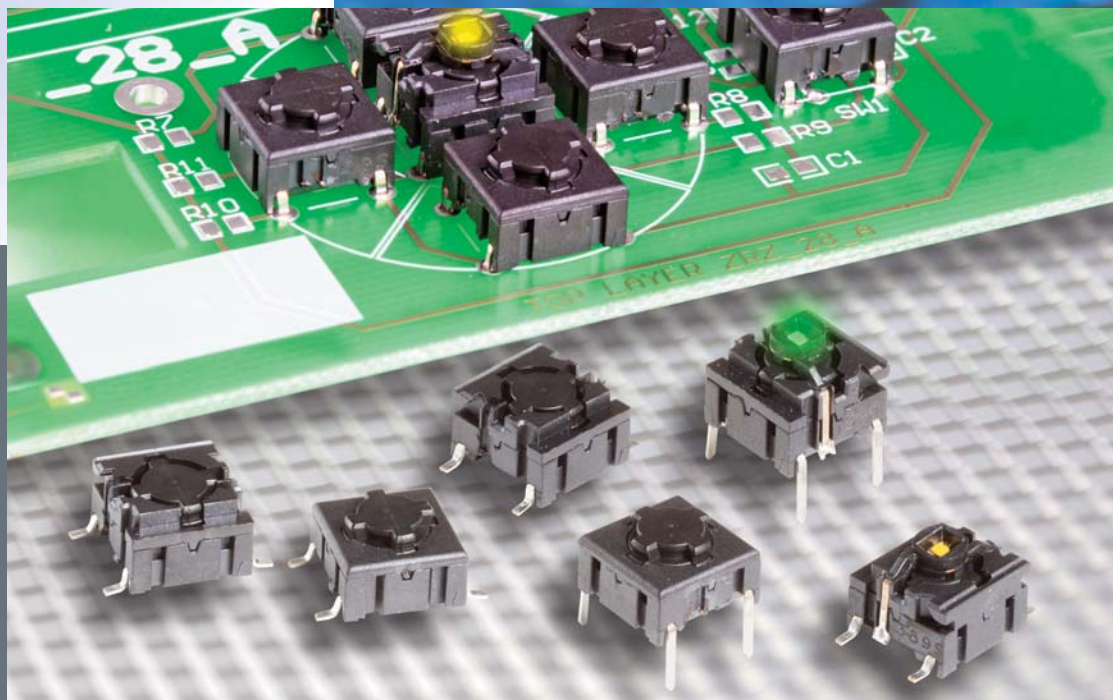


# mec

switches

## 5E/5G

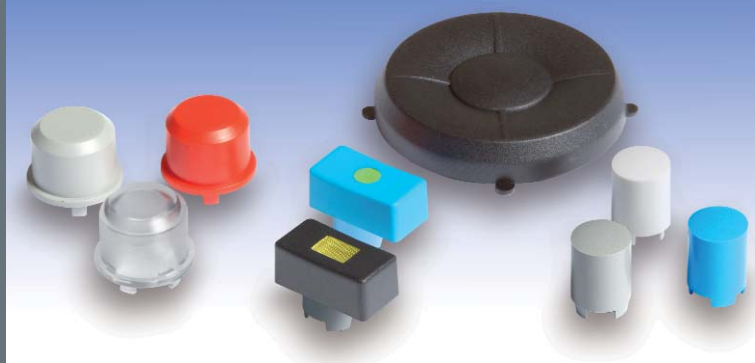


The Multimec 5E and 5G series is the new generation of the existing 3A, 3C, 3E, 3F, 4A and 4Fmultimec switches. The 5E and 5G series is a narrower product line, but the flexibility is more advanced. The switches will be supplied in high temperature material only to stand today's advanced soldering processes. The cap holding system is improved, by a superior snap system.

The 5E and 5G series can be supplied with LED's integrated in the switch and also as a surface mount switch. A high variety of aesthetic designed keycaps is available for the multimec switches both as solid caps, but also with excellent illumination possibilities.

The standard program will include three different actuation forces: 2, 3.5, and 6.5N. The multimec switches are known for their crisp audible tactile feel although a quiet version is available for sensitive applications such as audio, conference and military equipment.

The switch can be used as through-hole or SMD versions, and are designed to be used in a wide variety of applications.



Distributor:



**ERMEC, S.L. BARCELONA**  
C/ Francesc Teixidó, 22  
E-08918 Badalona  
(Spain)

Tel.: (+34) 902 450 160  
Fax: (+34) 902 433 088  
[info@ermec.com](mailto:info@ermec.com)  
[www.ermec.com](http://www.ermec.com)

**ERMEC, S.L. MADRID**  
C/ Sagasta, 8, 1ª planta  
E-28004 Madrid  
(Spain)

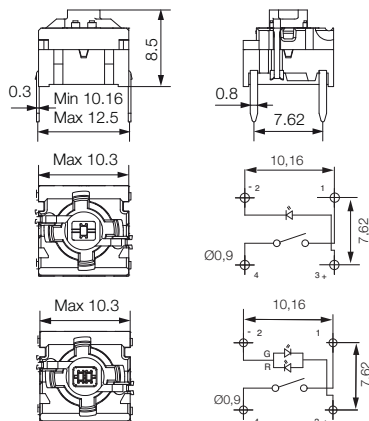
**PORTUGAL**  
[portugal@ermec.com](mailto:portugal@ermec.com)  
**BILBAO**  
[bilbao@ermec.com](mailto:bilbao@ermec.com)

### Technical Data:

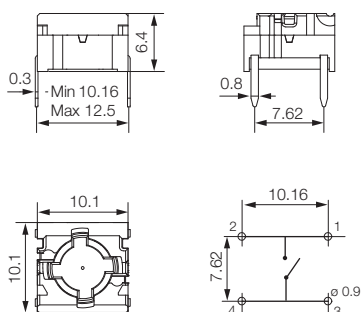
- through-hole or SMD / 50mA/24VDC / single pole/momentary
- 10.000.000 operations life time / IP67 sealing / actuation force: 2.0, 3.5, 6.5 N
- high temperature -40/+160° C



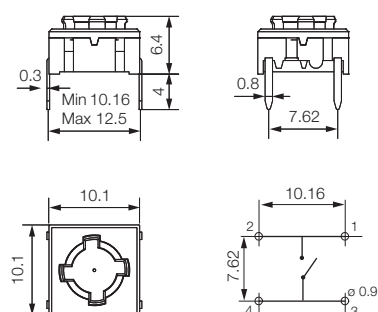
### 5GTH9 (through-hole) 1+2 LED



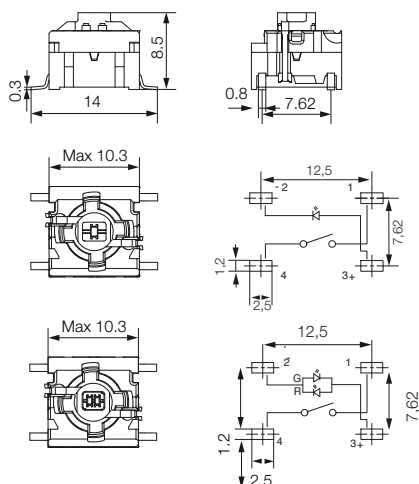
### 5GTH9 (through-hole)



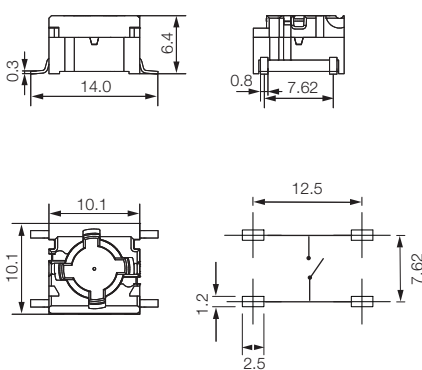
### 5ETH9 (through-hole)



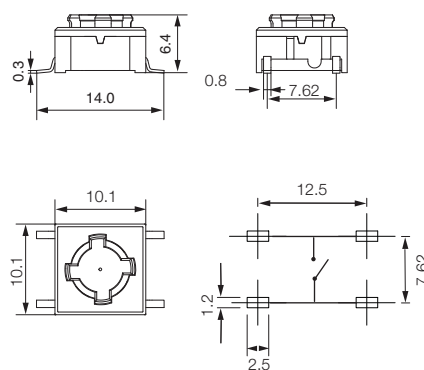
### 5GSH9 (SMD) 1+2 LED



### 5GSH9 (SMD)



### 5ESH9 (SMD)



### HOW TO ORDER

<b>5 G</b>					
<b>Switch</b>	<b>Mounting</b>	<b>Actuation force</b>	<b>LED</b>		
	TH9 through-hole	20	01 blue / 22 green / 42 yellow / 61 white / 82 red / 2242 green/yellow / 8222 red/green / 8242 red/yellow		
	SH9 surface mount	35			
		65			

<b>5 E</b>					
<b>Switch</b>	<b>Mounting</b>	<b>Actuation force</b>	<b>Switch</b>	<b>Mounting</b>	<b>Actuation force</b>
	TH9 through-hole	20		TH9 through-hole	20
	SH9 surface mount	35		SH9 surface mount	35
		65			65



Ordering example: 5GSH96535

**ERMEC, S.L. BARCELONA**  
C/ Francesc Teixidó, 22  
E-08918 Badalona  
(Spain)

**Tel.:** (+34) 902 450 160  
**Fax:** (+34) 902 433 088  
[info@ermec.com](mailto:info@ermec.com)  
[www.ermec.com](http://www.ermec.com)

**ERMEC, S.L. MADRID**  
C/ Sagasta, 8, 1ª planta  
E-28004 Madrid  
(Spain)

**PORTUGAL**  
[portugal@ermec.com](mailto:portugal@ermec.com)  
**BILBAO**  
[bilbao@ermec.com](mailto:bilbao@ermec.com)

See colour codes on our website: [www.mec.dk](http://www.mec.dk)  
Dimensions (mm) Unless otherwise specified, all tolerances ±0,2