

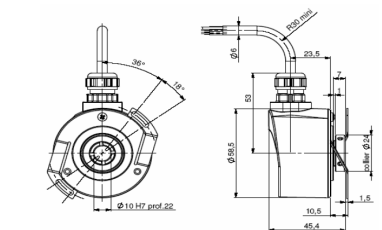
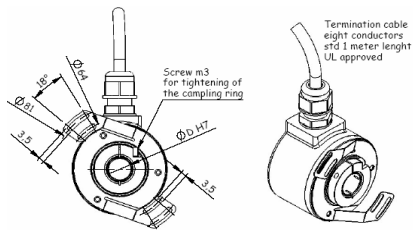
# RCI - Incremental Optical Encoders

PRECILEC optical incremental encoders are designed for accurately measuring speed and position of rotating shafts in industrial environment: machine tools, motor drives ...

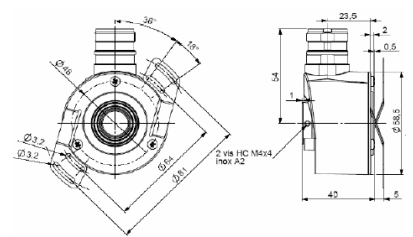
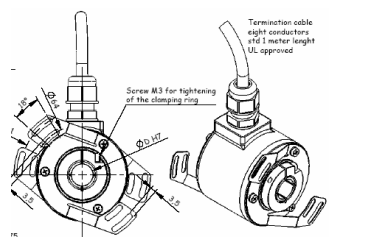
They use a differential optical measurement and a ratio-metric processing of the signal for minimizing the temperature and photodiode aging effects.

Their universal complementary push-pull output interface and their large supply voltage range make them very easy to connect to most of electronic control units with high noise immunity.

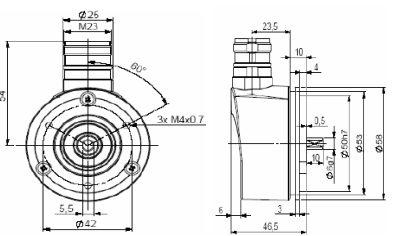
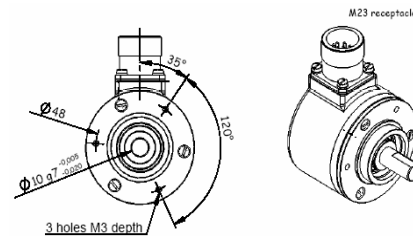
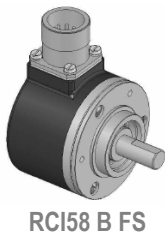
## SIZE 58 - BLIND SHAFT



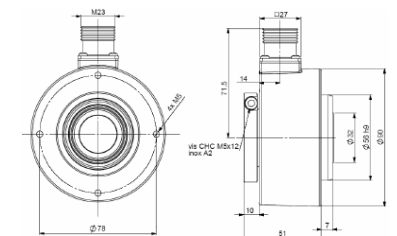
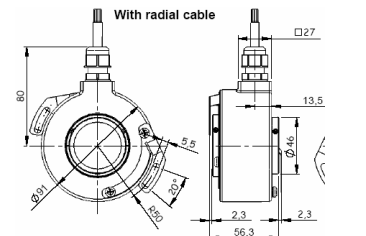
## SIZE 58 - HOLLOW SHAFT



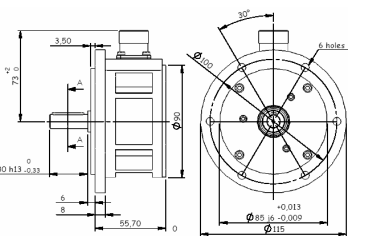
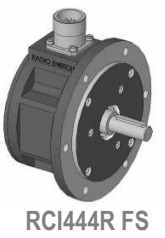
## SIZE 58 - FULL SHAFT



## SIZE 90 - FULL SHAFT



## FLANGE RE.0



# RCI - Incremental Optical Encoders

## MAIN CHARACTERISTICS

| Size | Output signals | Supply voltage | Frequency | Impulses | Type / max speed | Diameter | Fixation | Channel way | IP | Connection |
|------|----------------|----------------|-----------|----------|------------------|----------|----------|-------------|----|------------|
|------|----------------|----------------|-----------|----------|------------------|----------|----------|-------------|----|------------|

|         |                  |              |                 |                 |                                   |                                |                                   |               |      |  |
|---------|------------------|--------------|-----------------|-----------------|-----------------------------------|--------------------------------|-----------------------------------|---------------|------|--|
| RCI58   | B<br>(Universal) | 4,5 – 30 Vdc | 300 kHz         | 1024 / 2048     | BS<br>blind shaft<br>/ 10 000 rpm | 6, 8, 10,<br>12, 14 &<br>15 mm | 2 or 3<br>arms<br>spring<br>plate | A before<br>B | IP65 | Cable,<br>connector<br>M23 or MILP                 |
|         |                  |              |                 |                 | HS<br>Hollow shaft<br>/ 6 000 rpm |                                |                                   |               |      |  |
|         |                  |              |                 |                 | FS<br>Full shaft<br>/ 10 000 rpm  |                                |                                   |               |      |  |
|         | T<br>(Push-Pull) | 5 – 30 Vdc   | 300 kHz         | 50 – 10 000     | BS<br>blind shaft<br>/ 6 000 rpm  | 6, 8, 10,<br>12, & 14<br>mm    | 2 or 3<br>arms<br>spring<br>plate | B before<br>A | IP65 | Cable,<br>connector<br>M23 or<br>connector<br>MILP |
|         |                  | 11 – 30 Vdc  | 100 kHz         | Upon<br>request | HS<br>Hollow shaft<br>/ 6 000 rpm |                                |                                   |               |      |  |
|         | S<br>(RS422)     | 5 Vdc        | 300 kHz         | 50 – 10 000     | FS<br>Full shaft<br>/ 9 000 rpm   | 6, 8 & 10<br>mm                | Standard<br>or<br>synchro         |               |      |  |
| 100 kHz |                  |              | Upon<br>request |                 |                                   |                                |                                   |               |      |  |

|       |                  |              |         |             |                                   |                              |                                    |               |      |  |
|-------|------------------|--------------|---------|-------------|-----------------------------------|------------------------------|------------------------------------|---------------|------|--|
| RCI90 | B<br>(Universal) | 4,5 – 30 Vdc | 300 kHz | 1024 / 2048 | HS<br>Hollow shaft<br>/ 3 000 rpm | 20, 25, &<br>42 mm<br>1 inch | 1 arm<br>spring<br>plate           | A before<br>B | IP65 | Cable,<br>connector<br>M23 or<br>connector<br>MILP |
|       | T<br>(Push-Pull) | 11 – 30 Vdc  | 100 kHz | 1 – 10 000  | HS<br>Hollow shaft<br>/ 3 600 rpm | 12, 20, 25,<br>& 30 mm       | Double 1<br>arm<br>spring<br>plate | B before<br>A | IP65 | Cable,<br>connector<br>M23                         |
|       | S<br>(RS422)     | 5 Vdc        |         |             |                                   |                              |                                    |               |      |  |

|         |                  |              |         |             |                                  |                |                   |               |      |   |
|---------|------------------|--------------|---------|-------------|----------------------------------|----------------|-------------------|---------------|------|---|
| RCI444R | 4<br>(Push-pull) | 4,5 – 30 Vdc | 300 kHz | 1024 / 2048 | FS<br>Full shaft<br>/ 10 000 rpm | 7 and 11<br>mm | Flange<br>RE.0444 | A before<br>B | IP65 | Cable, M23<br>connector or<br>MILP<br>connector |
|         |                  | 11 – 30 Vdc  | 100 kHz | 1 - 2500    | FS<br>Full shaft<br>/ 6 000 rpm  |                |                   | B before<br>A |      |   |
|         | 3<br>(RS422)     | 4,5 – 30 Vdc | 300 kHz | 1024 / 2048 | FS<br>Full shaft<br>/ 10 000 rpm |                |                   | A before<br>B |      |   |
|         |                  | 5 Vdc        | 100 kHz | 1 - 2500    | FS<br>Full shaft<br>/ 6 000 rpm  |                |                   | B before<br>A |      |   |

- We reserve the right to modify technical characteristics in the interest of technological advance -

For more detailed information, please refer to the individual datasheets