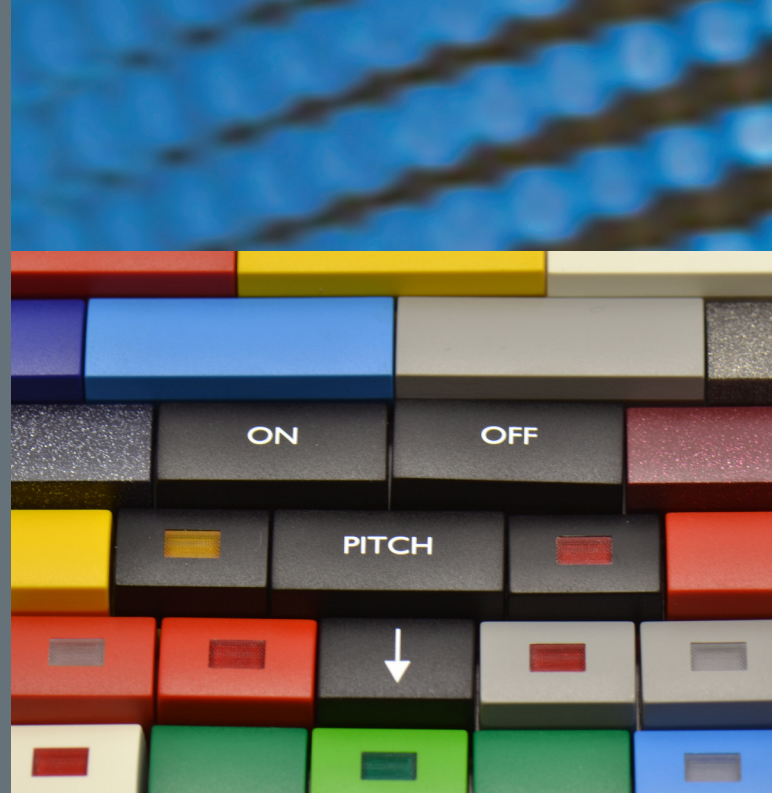




1A/1H/1M/1ZA series caps have a hinge-type retention system which gives a rocker-action actuation when mounted on Multimec 5G switch.

Illumination can be provided with 1A in transparent colours or 1H with different colour lenses.

1A/1H, 1ZA and 1M caps offer three different dimensions, many solid and transparent colours as well as lens colours. 1A has many legend options in its standard offering; however, all caps can be provided with custom legends.



*Letter legends on the picture are not standard



ERMEC, S.L. BARCELONA
C/ Francesc Teixidó, 22
E-08918 Badalona
(Spain)

Tel.: (+34) 902 450 160
Fax: (+34) 902 433 088
info@ermec.com
www.ermec.com

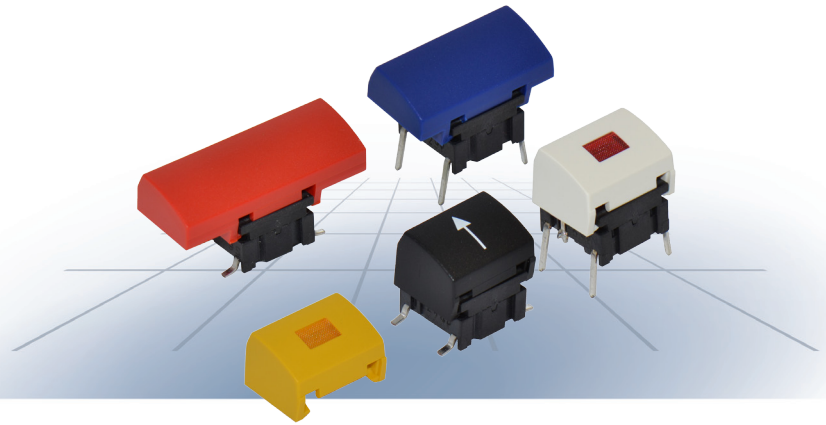
ERMEC, S.L. MADRID
C/ Sagasta, 8, 1ª planta
E-28004 Madrid
(Spain)

PORTUGAL
portugal@ermec.com
BILBAO
bilbao@ermec.com

Distributor:

Technical Data:

- through-hole or SMD
- 50mA/24VDC
- single pole/momentary
- 10.000.000 operations lifetime
- IP67 sealing
- temp. range: switch: -40/+160°C
LED: -30/+85°C
solid keycap: -40/+65°C
transparent keycap: -40/+85°C
- actuation force: 2.0, 3.5, 6.5 N



Dimensions (SMD w/LED) 1A	Dimensions (TH w/LED) 1H	Dimensions (through-hole) 1ZA	Dimensions (SMD) 1M
PCB layout 	PCB layout 	PCB layout 	PCB layout

HOW TO ORDER illuminated

5 G						
Switch	Mounting	Actuation force	LED	Cap	Colour code 1H	Lens 1H
	TH9 through-hole SH9 surface mount	20 35 65 Q**	01 blue 22 green 42 yellow 61 white 82 red 2242 green/yellow 8222 red/green 8242 red/yellow	1H 1A 	00 blue 06 white 02 green 08 red 03 grey 09 black 04 yellow	1 transparent 2 green 4 yellow 6 frosted white 8 red
					Colour code 1A	
					10 frosted blue 16 frosted white 12 frosted green 18 frosted red 14 frosted yellow	

HOW TO ORDER non-illuminated

5 G			
Switch	Mounting	Actuation force	Cap
	TH9 through-hole SH9 surface mount	20 35 65 Q**	1A 1ZA 1M
			Colour code
			00 blue 30*ultra blue 50*metal dark blue 02 green 40*dusty blue 53*metal light grey 03*grey 42*aqua blue 57*metal dark grey 04 yellow 32 mint green 58 metal bordeaux 06*white 33 tele grey 08 red 34 melon 09*black 38 noble red * Colours for 1ZA

**Quiet version is only available for actuation force 2.0N (20) and the letter Q is added to the end of the switch part number. See the ordering example.

Dimensions (mm) Unless otherwise specified, all tolerances +/- 0.2

Ordering example: 5GSH93582 + 1H068 with illumination
5GTH965 + 1ZA57 without illumination
**5GTH92001Q with illumination or 5GSH920Q (quiet version)

For updates of products and/or changes of specifications please see www.mec.dk

See colour codes on our website: www.mec.dk