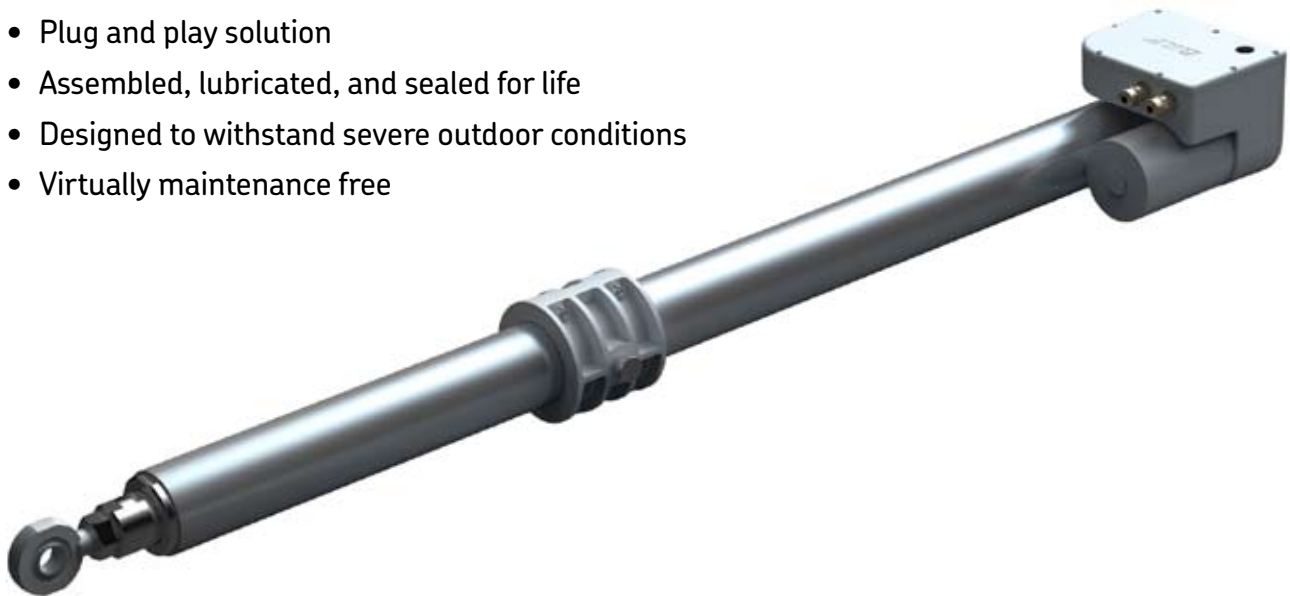


Linear actuator

CASD-60

Benefits

- Specifically designed for solar tracking applications
- Up to 20 years life
- Limited backlash
- High accuracy
- Low current consumption
- Plug and play solution
- Assembled, lubricated, and sealed for life
- Designed to withstand severe outdoor conditions
- Virtually maintenance free



ERMEC, S.L. BARCELONA
C/ Francesc Teixidó, 22
E-08918 Badalona
(Spain)

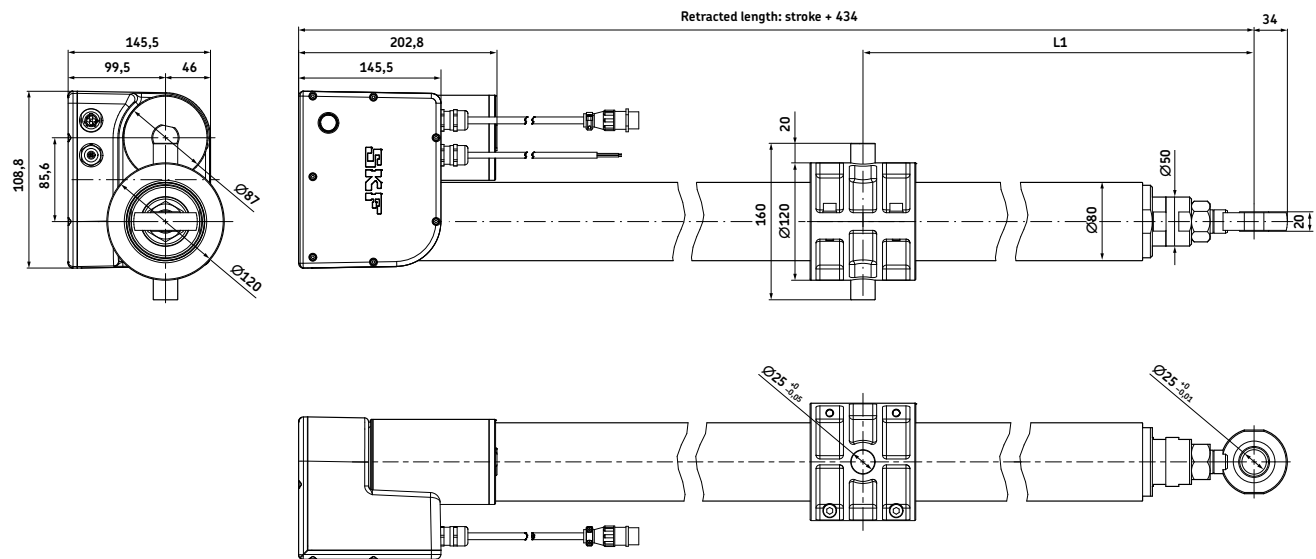
Tel.: (+34) 902 450 160
Fax: (+34) 902 433 088
info@ermec.com
www.ermec.com

ERMEC, S.L. MADRID
C/ Sagasta, 8, 1ª planta
E-28004 Madrid
(Spain)

PORTUGAL
portugal@ermec.com
BILBAO
bilbao@ermec.com

The SKF logo, consisting of the letters "SKF" in a bold, white, sans-serif font on a blue rectangular background with a red horizontal bar at the bottom.

Dimensional drawing



Stroke (mm) From 50 to 1 500*

Installed dimension L1 Selectable from a minimum of 200 mm to a maximum of stroke + 150 mm

* For stroke > 1 000 mm, static load needs to be verified

Technical data

	Unit	CASD-60
Dynamic load (push/pull)	N	12 000
Static load (push/pull)	N	60 000 (up to 1 000 mm stroke)
Speed	mm/s	up to 2,5
Stroke	mm	up to 1 500
Voltage	V	12/24 V DC or 120/230 V AC
Integrated limit switches	-	optional
Feedback positioning	-	optional (encoder)
Feedback positioning resolution	pulses/mm	49 or 67
Operating temperature	°C	-20 to +60
Type of protection	IP	65



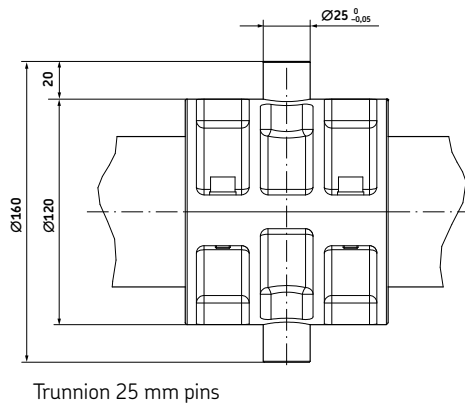
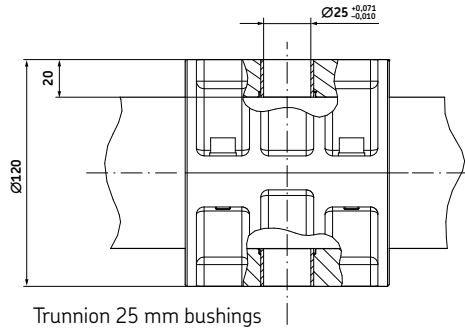
ERMEC, S.L. BARCELONA
C/ Francesc Teixidó, 22
E-08918 Badalona
(Spain)

Tel.: (+34) 902 450 160
Fax: (+34) 902 433 088
info@ermec.com
www.ermec.com

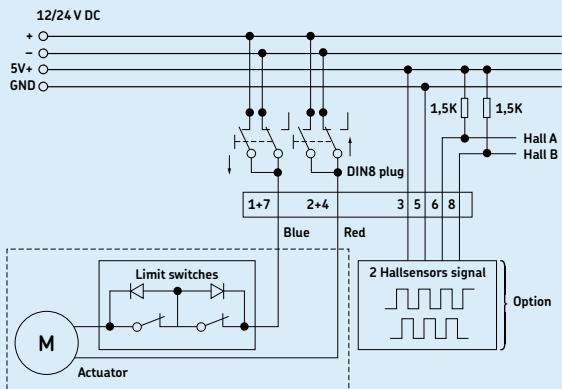
ERMEC, S.L. MADRID
C/ Sagasta, 8, 1ª planta
E-28004 Madrid
(Spain)

PORTUGAL
portugal@ermec.com
BILBAO
bilbao@ermec.com

Trunnion mount designs



Connecting diagram

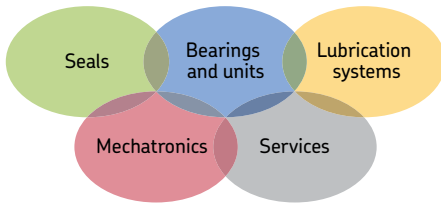


ERMEC, S.L. BARCELONA
C/ Francesc Teixidó, 22
E-08918 Badalona
(Spain)

Tel.: (+34) 902 450 160
Fax: (+34) 902 433 088
info@ermec.com
www.ermec.com

ERMEC, S.L. MADRID
C/ Sagasta, 8, 1ª planta
E-28004 Madrid
(Spain)

PORTUGAL
portugal@ermec.com
BILBAO
billbao@ermec.com



The Power of Knowledge Engineering

Drawing on five areas of competence and application-specific expertise amassed over more than 100 years, SKF brings innovative solutions to OEMs and production facilities in every major industry world-wide. These five competence areas include bearings and units, seals, lubrication systems, mechatronics (combining mechanics and electronics into intelligent systems), and a wide range of services, from 3-D computer modelling to advanced condition monitoring and reliability and asset management systems. A global presence provides SKF customers uniform quality standards and worldwide product availability.

Ordering key



Type

Motor type:

- 12 V DC
- 24 V DC
- 120 V AC
- 230 V AC

- A
- B
- N
- P

Maximum Dynamic Load/Speed:

12 000 N - 1,8 mm/s

1

Screw type:

Trapezoidal

A

Stroke in mm:

- For 3-digit stroke dimension:
- For 4-digit stroke dimension:

OXXX
XXXX

Installed dimension in mm*:

- For 3-digit installed dimension:
- For 4-digit installed dimension:

OXXX
XXXX

IP protection:

IP65

A

Front attachment:

- 25 mm rod end
- 20 mm rod end
- Other

- A
- B
- X

Rear attachment:

- Trunnion 25 mm pins
- Trunnion 25 mm bushings
- Other

- A
- B
- X

Option 1:

- None
- Limit switches
- Other


- N
- L
- X

Option 2:

- None
- Encoder
- Other

- N
- E
- X

* Distance between front attachment and trunnion mount.

 **ERMEC, S.L. BARCELONA**
 C/ Francesc Teixidó, 22
 E-08918 Badalona
 (Spain)

Tel.: (+34) 902 450 160
 Fax: (+34) 902 433 088
info@ermec.com
www.ermec.com

ERMEC, S.L. MADRID
 C/ Sagasta, 8, 1ª planta
 E-28004 Madrid
 (Spain)

PORTUGAL
portugal@ermec.com
 BILBAO
bilbao@ermec.com

© SKF is a registered trademark of the SKF Group

© SKF Group 2011
 The contents of this publication are the copyright of the publisher and may not be reproduced (even extracts) unless prior written permission is granted. Every care has been taken to ensure the accuracy of the information contained in this publication but no liability can be accepted for any loss or damage whether direct, indirect or consequential arising out of the use of the information contained herein.

