

We hereby inform you that the Controlmec solution has been improved to eliminate the risk of double click when pushing the centre button and to improve the illumination.

There have been three changes:

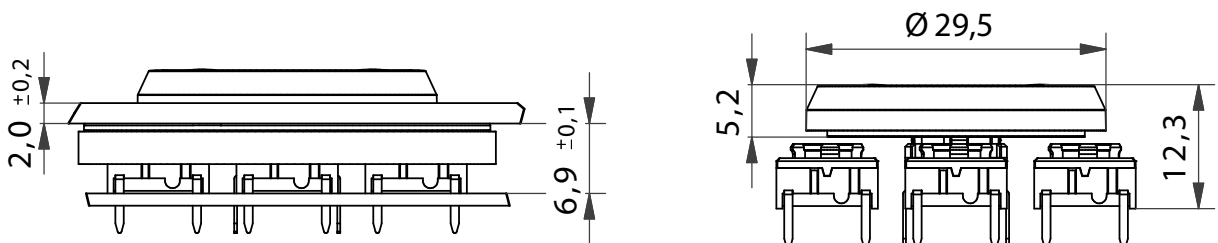
- 1) height change in both 1ZW and 1Z cap solutions (Page 1)
- 2) extra cuts in 1ZY seal support (Page 2)
- 3) simplified under part of the cap (Page 2)

1.

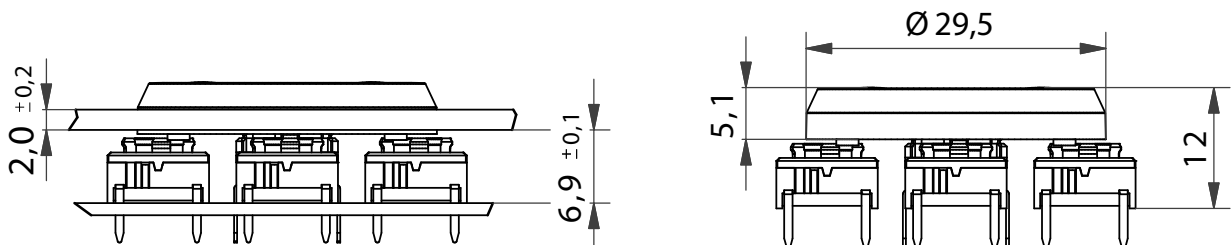
In order to increase the functionality of the caps, the height of the panel sealed Controlmec cap 1ZW has been changed from 11.85mm to 12.30mm and the height of the cap 1Z has been changed from 11.85mm to 12.0mm.

See the changes in more detail from drawings below.

Controlmec 1ZW (with panel sealing)



Controlmec 1Z (without panel sealing)



ERMEC, S.L. BARCELONA
C/ Francesc Teixidó, 22
E-08918 Badalona
(Spain)

Tel.: (+34) 902 450 160
Fax: (+34) 902 433 088
info@ermec.com
www.ermec.com

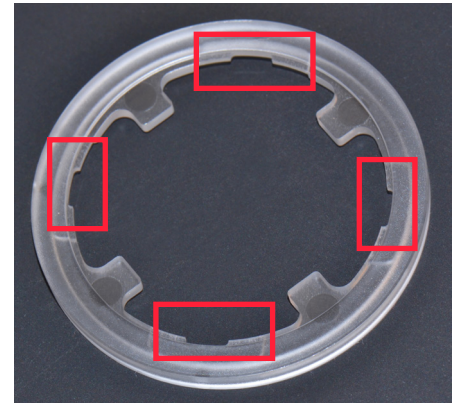
ERMEC, S.L. MADRID
C/ Sagasta, 8, 1ª planta
E-28004 Madrid
(Spain)

PORTUGAL
portugal@ermec.com
BILBAO
bilbao@ermec.com

2.

The 1ZY seal support now has four extra cuts visible in the picture to the right.

The extra spacing eliminates the risk of seal support activating the surrounding 5E switches.



3.

The under part of both 1Z and 1ZW cap has been simplified by removing the four arches. Cleaner under part of the cap improves both illumination as well as functionality. See the change in the pictures below.


This upgrade will be production ready from the end of May.



Left: old under part (1Z06). Right: new simplified under part (1Z16).

Do please note that, it is recommended to use only Multimec **3.5N** or **6.5N** 5 series switches for better functionality of the Controlmec solution. Customers are advised not to use 2.0N switches due to the risk of double click.

Be reminded that because of this, quiet switch option is not part of the standard solution.


ERMEC, S.L. BARCELONA
 C/ Francesc Teixidó, 22
 E-08918 Badalona
 (Spain)

Tel.: (+34) 902 450 160
 Fax: (+34) 902 433 088
info@ermec.com
www.ermec.com

ERMEC, S.L. MADRID
 C/ Sagasta, 8, 1ª planta
 E-28004 Madrid
 (Spain)

PORTUGAL
portugal@ermec.com
BILBAO
bilbao@ermec.com