

- General purpose high current industrial relays
- High resistance to inrush current
- For pcb or chassis mounting
- Flat insert faston terminal options
- AC and DC coils

• Recognitions, certificates, directives: RoHS,   

Contacts

Contact number & arrangement		SPST-NO (1NO), SPST-NC (1NC), SPDT (1 C/O)
Contact material		AgSnOInO, AgCdO
Max. switching voltage	AC / DC	277VAC / 30VDC
Min. switching voltage		12VAC / 5VDC
Max. switching power	AC1 DC1	SPST-NO: 8.31KVA, SPST-NC: 4.155KVA, SPDT: 5.54KVA (NO) 2.77KVA SPST-NO: 900W, SPST-NC: 450W, SPDT: 600W (NO) 300W (NC)
Max. switching current		SPST-NO: 30A, SPST-NC: 15A, SPDT: 20A (NO) / 10A (NC)
Min. switching current		1A
Contact Resistance		< 50mΩ at 0.1A / 6VDC

UL/CSA Ratings

General Purpose	240VAC	SPST-NO: 30A, SPST-NC: 15A, SPDT: 20A (NO) 10A (NC)
Resistive	240VAC	SPST-NO: 30A, SPST-NC: 15A, SPDT: 20A (NO) 10A (NC)
	28VDC	SPST-NO: 20A, SPST-NC: 10A, SPDT: 20A (NO) 10A (NC)
Motor	240VAC	SPST-NO: 2HP, SPST-NC: 0.5HP, SPDT: 2HP (NO) 0.5HP (NC)
	120VAC	SPST-NO: 1HP, SPST-NC: 0.25HP, SPDT: 1HP (NO) 0.25HP (NC)
LRA / FLA	240VAC	SPST-NO: 80A/30A, SPST-NC: 30A/10A, SPDT: 50A/20A (NO) 20A/7A (NC)
	120VAC	SPST-NO: 98A/22A
Tungsten	120VAC	SPST-NO: TV5, SPST-NC: TV3, SPDT: TV5 (NO) TV3 (NC)
Ballast	277VAC	SPST-NO: 10A, SPST-NC: 3A, SPDT: 10A (NO) 3A (NC)

Coil

Rated voltage	AC	12... 220VAC 50/60Hz
	DC	5... 110VDC
Must release voltage		AC: $\geq 0.15U_n$ DC: $\geq 0.10U_n$
Operating range of supply voltage		See Tables 1, 2
Rated power consumption		AC: 2VA (approx.) DC: 0.9W

Insulation

Insulation category	C250	
Insulation rated voltage	250VAC	
Dielectric strength	coil - contact	2500Vrms / 1min
	contact - contact	1500Vrms / 1 min
Contact - coil distance	clearance	3 mm
	creepage	3 mm

General data

Operating time (typical value)	≤ 15 msec	
Release Time	≤ 10 msec	
Electrical Life		
resistive AC1	$> 10^5$	
Mechanical life	$> 10^7$	
Dimensions (L x W x H)	various - see dimensional drawings	
Weight	28...33g	
Ambient Temperature	storage	-40... + 130°C
	operating	-55... + 85°C
Cover protection category	IP00, IP40, IP67 depending on version	
Shock resistance	10g, 11ms, functional: 100g destructive	
Vibration resistance	DA 1.5mm, 10-55Hz	

Coil Data - DC voltage version

Table 1

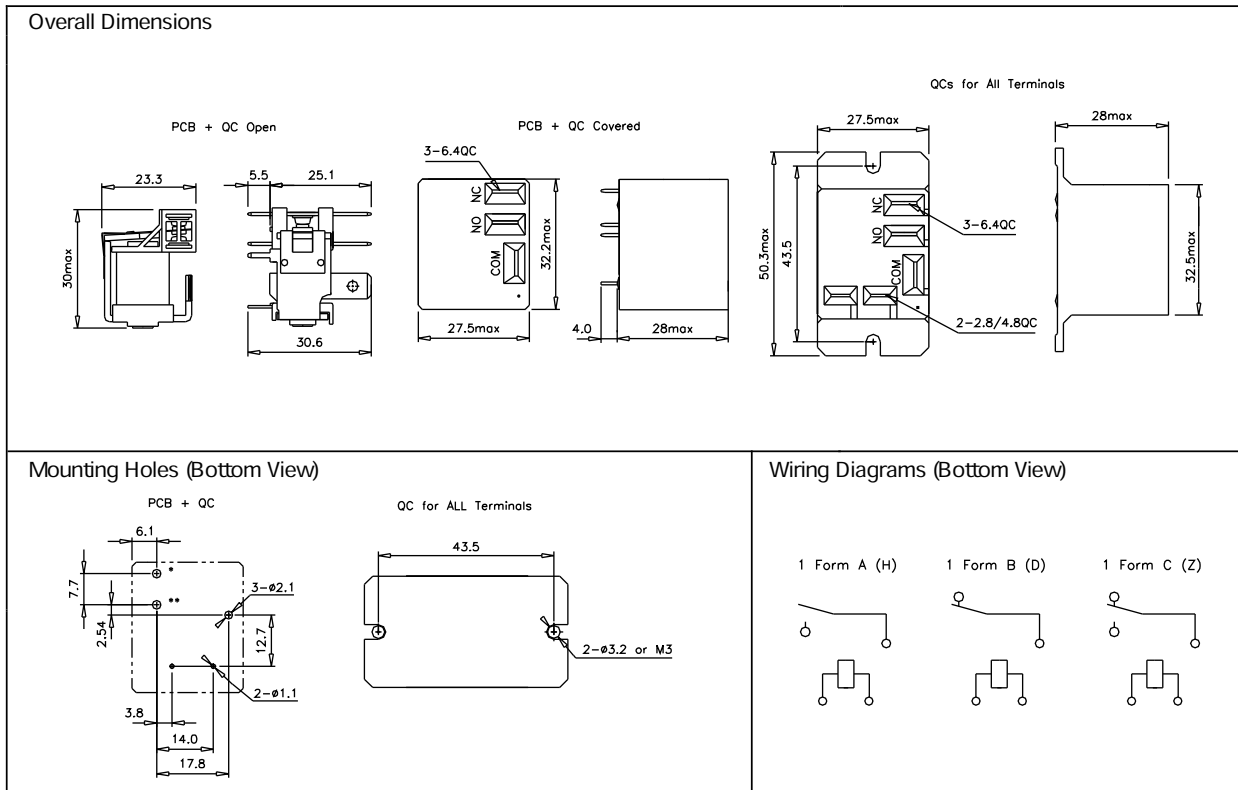
Coil code	Rated voltage V DC	Coil resistance ± 10% at 20°C Ω	Must Operate Voltage Max VDC	Must Release Voltage Min VDC
1005	5	27	3.75	0.5
1006	6	40	4.50	0.6
1009	9	97	6.75	0.9
1012	12	155	9.00	1.2
1024	24	660	18.00	2.4
1048	48	2560	36.00	4.8
1110	110	10330	82.50	11.0

Coil Data - AC voltage version

Table 2

Coil code	Rated voltage V DC	Coil resistance ± 10% at 20°C Ω	Must Operate Voltage Max VAC	Must Release Voltage Min VAC
5012	12	26	10.20	1.8
5024	24	106	20.40	3.6
5110	110	2750	93.50	16.0
5220	220	11000	187.00	33.0

OVERALL DIMENSIONS, MOUNTING HOLES AND WIRING DIAGRAM (mm)



Ordering Codes

