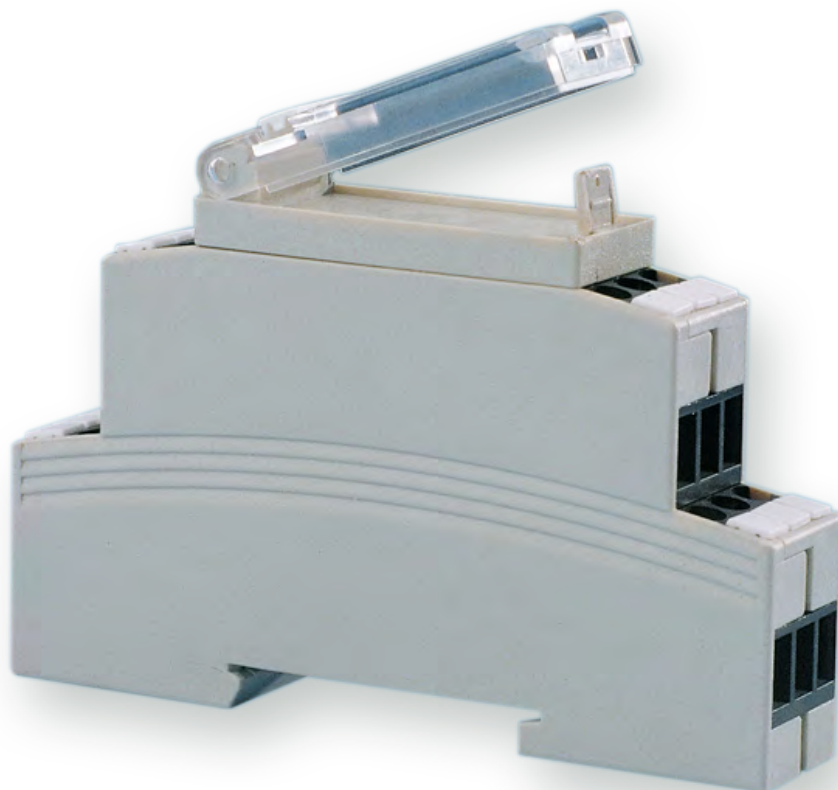




IDG-A

Enclosure for DIN-Rails





IDG-A Enclosure for DIN-Rails

GENERAL

GENERAL



DIN Rail Mount
Enclosure IDG-A

With its slim design, the installation housing IDG-A is suitable for applications in building automation. This enclosure has been designed according to DIN 43 880, providing the dimensions and specifications required for installation component standards. Conforming to VBG 4 and IEC529/DIN VDE 0470-1, the IDG-A prevents accidental shock and injury while meeting the requirements of the automation industries. This new housing enables users to incorporate a top horizontal pcb or three horizontal pcbs. The top horizontal pcb is ideal for holding signalling devices/ indicators and switches. Fully populated, the terminal blocks have a maximum of 12 screw clamp terminals. For applications not requiring all 12 I/O positions or requirements for additional internal space, selective loading may be done, with empty positions being filled with blind plugs.

- Installed width of 17.5^{-0.5} mm
- Dimensional size per DIN 43 880, size 1
- Mountable to DIN rails meeting DIN 46 277 and DIN EN 50 022 (35mm)
- Ease of assembly due to snap-together design
- up to three horizontal PCBs
- Two terminal blocks (one left, one right), each with two sets of three positions (may be custom-loaded)
- Blind insert may be utilized in-place of terminal blocks for maximum space utilization
- 2 cover versions: grey cover or grey cover frame for clear hinged face plate (for access to switching components)
- Customer-specific colors and designs available upon request



IDG-A Enclosure for DIN-Rails

TECHNICAL DATA

ELECTRICAL AND MECHANICAL CHARACTERISTICS

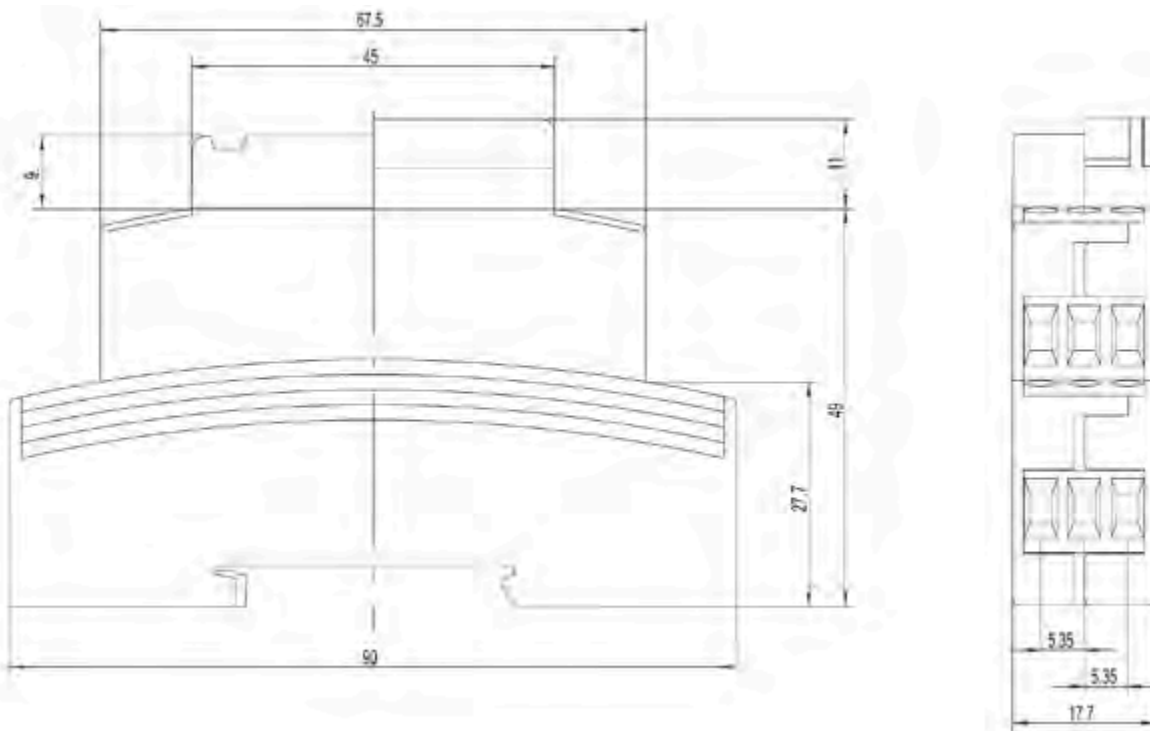
Type	IDG-A
Degree of Protection	IP20
Air- and Creepage (Terminal Block)	min. 2,5 mm
Creepage proof (Terminal Block)	CTI 250
Insulation Material	III a
Current Rating	max. 12 A
Wire Size	max. 2,5 mm ² (14 AWG)
Operating Temperature	-40 - 110 °C
Outer Dimensions: With Cover (W x H x D)	90 x 58 x 17,7
Outer Dimensions: With Hinged Face Plate (W x H x D)	90 x 60 x 17,7
Material	
Lower Housing Shell	PC 30 % GF UL 94-V1
Upper Housing Shell	PC 30 % GF UL 94-V1
Blind Terminal Block	PC 30 % GF UL 94-V1
Cover	PC 30 % GF UL 94-V1
Hinged Face Plate	PC UL 94-V2
Terminal Block	PA 46 30 % GF UL 94-V0
Blind Plug	PC UL 94-V2
Screw Clamp	Steel (zinc plated)
PCB Termination Pin	CuSn 6 (2 µm Ni +5 µm SnPb plating)
Label	PA 66



IDG-A Enclosure for DIN-Rails

DIMENSIONS

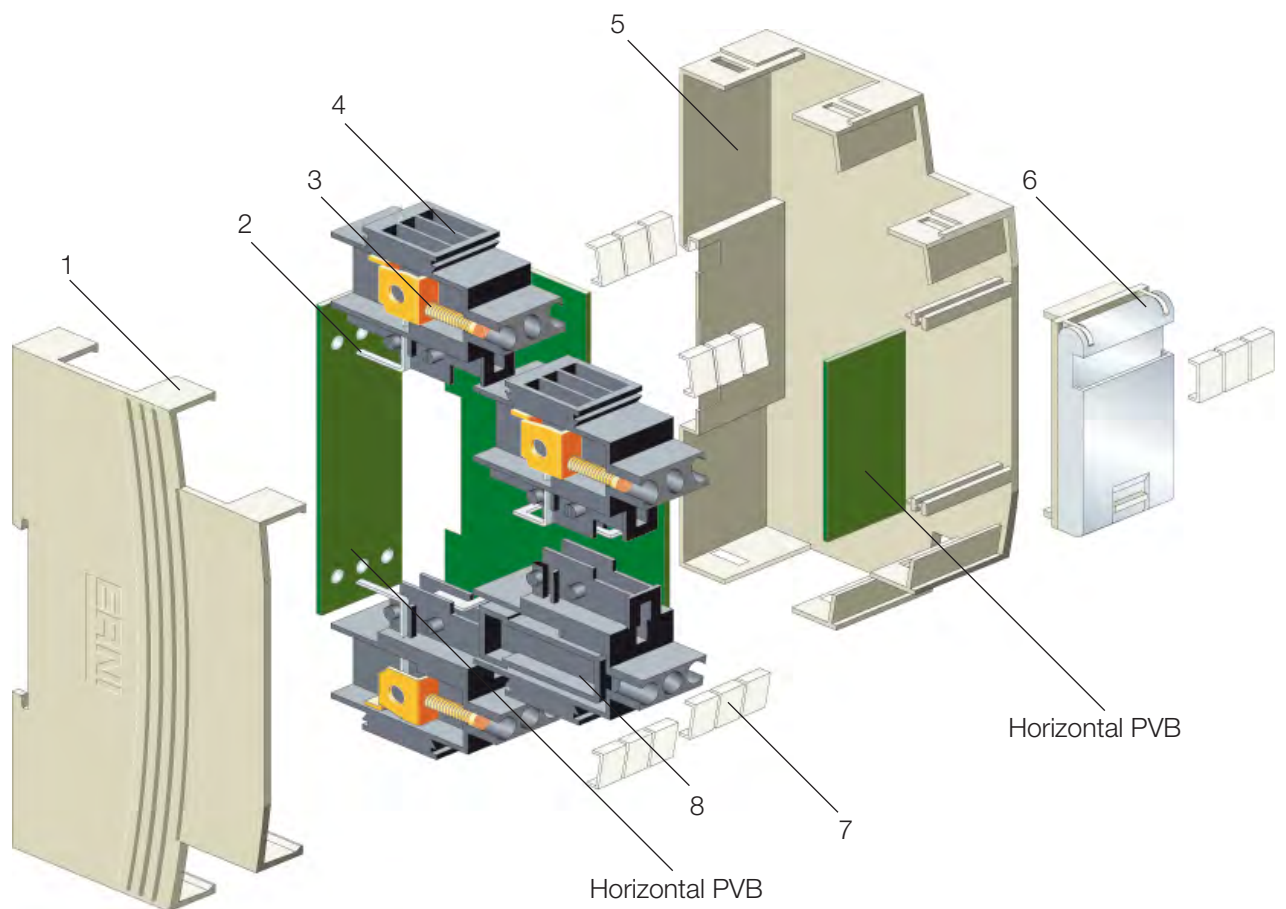
DIMENSIONAL DRAWING



IDG-A Enclosure for DIN-Rails

COMPONENTS

FEATURES



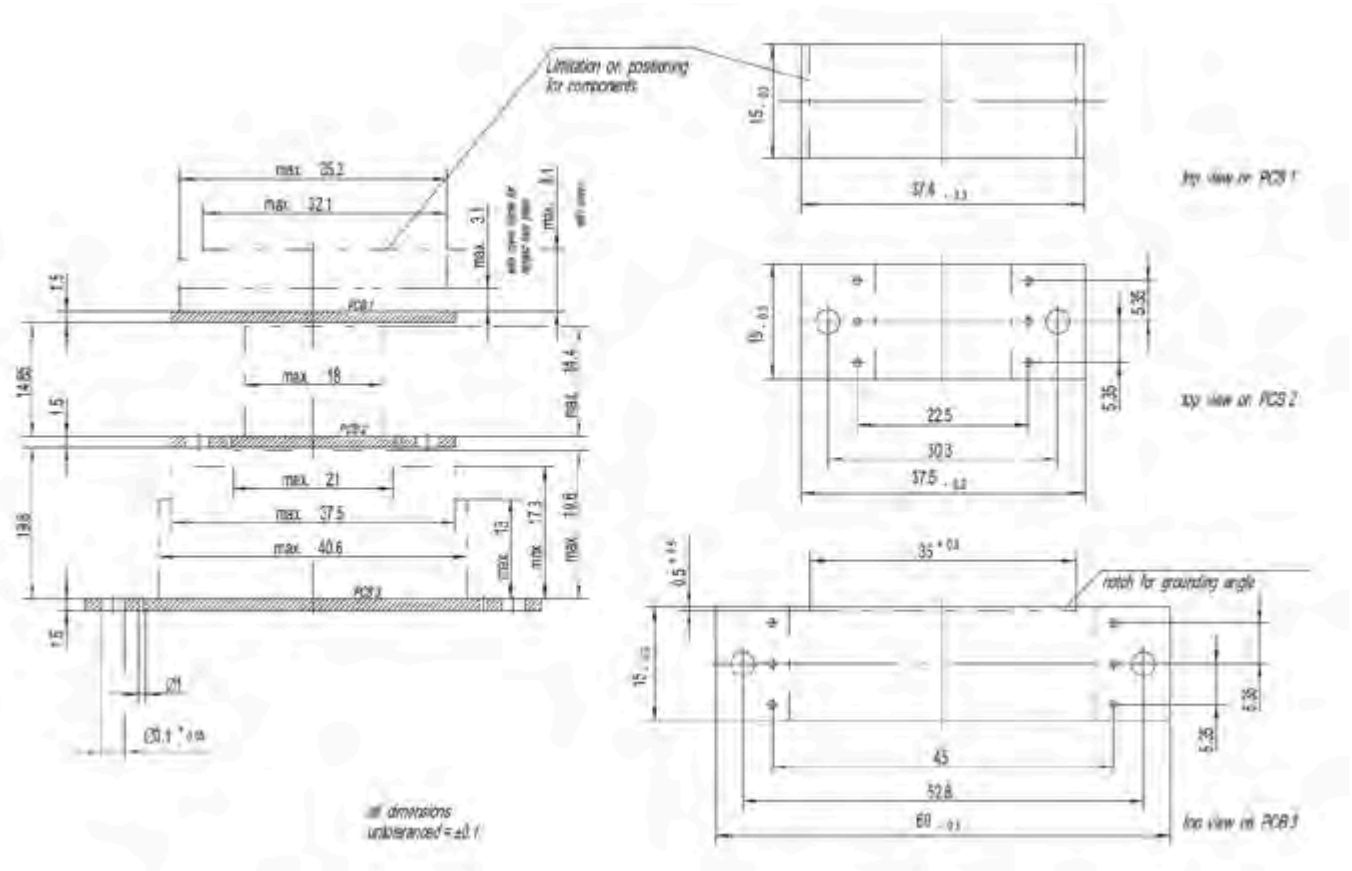
Pos.	Description	Material
1	Upper Housing Shell	PC 30% GF
2	PCB Terminal Pin	CuSn6 (tin plated)
3	Screw Clamp	Stahl (zinc plated)
4	Terminal Block	PA 46 30% GF
5	Lower Housing Shell	PC 30% GF
6	Cover with Hinged Face Plate	PC 30% GF/PC
7	Snap-on Label	PA 66
8	Blind Plug	PC



IDG-A Enclosure for DIN-Rails

PCB DIMENSIONS AND INSTALLATION NOTES

PCB HORIZONTAL





IDG-A Enclosure for DIN-Rails

COMPLETE KITS AND COMPONENTS

ORDERING INFORMATION

Description	Cover Version	Part Number
Complete Kit	Cover	104992
Complete Kit	Cover with Hinged Face Plate	104993
Lower Housing Shell	–	064080
Upper Housing Shell	–	064081
Terminal Block Left, Assembled	–	104872
Terminal Block for Horizontal PCB, Assembled	–	104874
Snap-on Label	–	104413
Blind Terminal Block	–	064085
Terminal Block, unbestückt	–	064086
Blind Plug	–	414466
Screw Clamp	–	104150
PCB Pin 1 Left/Right	–	064087
PCB Pin 2, Left	–	064088
PCB Pin 3, Left	–	103681
PCB Pin 2, Right	–	103950
PCB Pin for Horizontal PCB	–	103684
Cover	–	064082
Cover for Hinged Face Plate	–	064083
Hinged Face Plate, transparent	–	064084

The complete kits are packaged individually and consist of the following: an upper housing shell, lower housing shell, two left terminal blocks, two right terminal blocks (both terminal blocks are populated with 6 pins and screw clamps each) and a cover.



ERMEC, S.L. BARCELONA
C/ Francisc Teixidó, 22
08918 Badalona SPAIN

Tel. +34 902 450 160
info@ermec.com
www.ermec.com

ERMEC, S.L. - MADRID
C/ Puerto Rico, 4
28222 Majadahonda (Madrid) SPAIN

bilbao@ermec.com
portugal@ermec.com



Find your correct contact person
on [erni.com/locations](https://www.erni.com/locations)