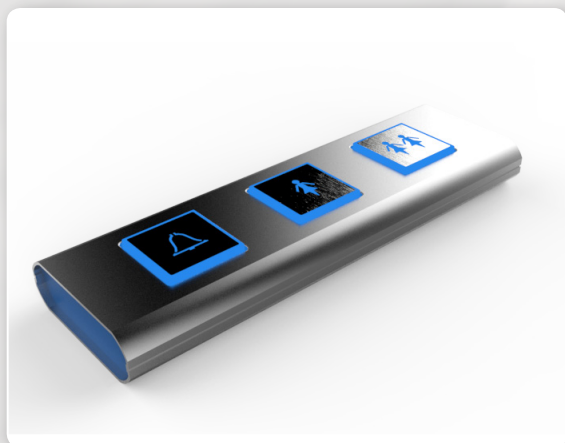
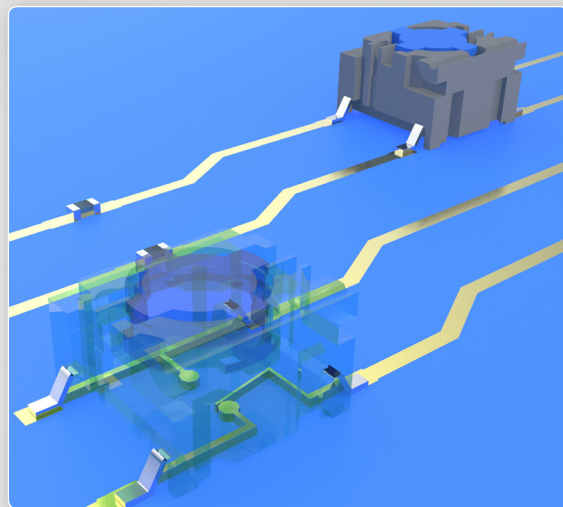


Normally closed/normally open (NC/NO) function to the Multimec® 5 series switches means that contact is established when not activated. When the switch is activated it breaks the contact and makes a new contact.

The switch has three functions:

- NC (makes)
- NO (breaks)
- NC/NO (switch over, also known as SPDT - single pole double throw).



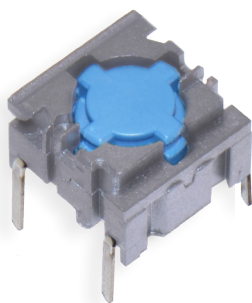
#### Application - NURSE CALL SYSTEM

The advantage of using the NC/NO function switch is that the system all the time "knows" that the connection to the nurse call system is still in place and working.

#### Application - PUSH-TO-TALK HEADSET

NC/NO function switch simplifies the change between a speaker (headset) and microphone unit. The headset is working when switch is not activated and when pressing the switch, one breaks the signal and the microphone turns on.



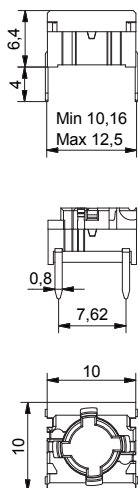


- Through-hole (TH) or surface mount (SMD)
- 50mA/24VDC
- Single pole/momentary
- 1,000,000 operations lifetime
- Temperature range: -40/+160°C
- IP 67 sealing
- Actuation force: 2.0N, 3.5N, 6.5N
- Available for 5E and non-illuminated 5G in all standard actuation forces.
- Has the same PCB layout as the NO 5E and 5G
- The housing of a NC/NO function switch is grey

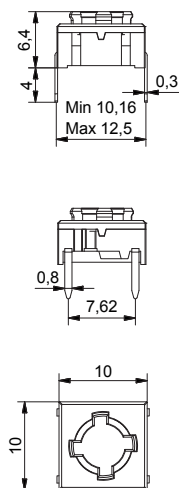
All dimensions in mm

### THROUGH-HOLE (TH)

5G

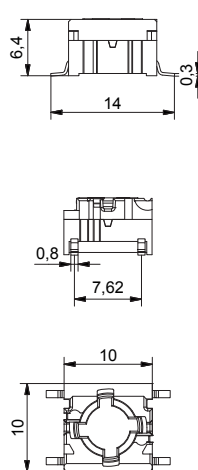


5E

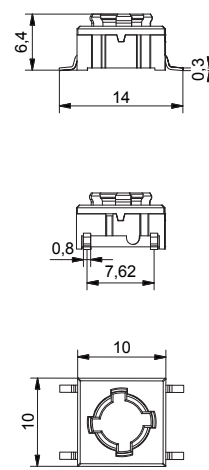


### SURFACE MOUNT (SMD)

5G

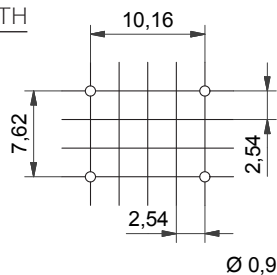


5E

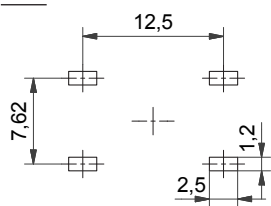


### PCB LAYOUT

TH

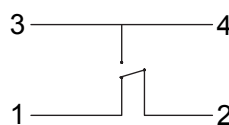


SMD

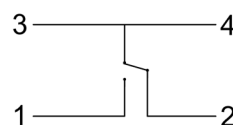


### CIRCUIT DIAGRAM

non-activated



activated



### HOW TO ORDER

NOT FOR SALE IN JAPAN

Switch

5 E

5 G

Mounting

TH9 through-hole

SH9 surface mount

Actuation force

20

35

65

Function

NCNO normally closed/normally open



ERMEC, S.L. BARCELONA  
C/ Francesc Teixidó, 22  
E-08918 Badalona  
(Spain)

Tel.: (+34) 902 450 160  
Fax: (+34) 902 433 088  
[info@ermec.com](mailto:info@ermec.com)  
[www.ermec.com](http://www.ermec.com)

ERMEC, S.L. MADRID  
C/ Sagasta, 8, 1ª planta  
E-28004 Madrid  
(Spain)

PORTUGAL  
[portugal@ermec.com](mailto:portugal@ermec.com)  
BILBAO  
[bilbao@ermec.com](mailto:bilbao@ermec.com)