

CARATTERISTICHE MECCANICHE - MECHANICAL SPECIFICATIONS

Dimensioni - Dimensions: vedi disegni - see drawings

Albero mschio - Solid shaft: acciaio inox - stainless steel

Carico sull'albero - Shaft loading: assiale - axial: 200 N; radiale - radial 200 N

Numero giri - Shaft rotational speed: 10.000 RPM per brevi periodi - to short cycle time; 6.000 RPM continui - continuous;
2000 giri/min con asse stagno - with protection shaft

Coppia di partenza a 25° C - starting torque at 25° C: 0,025 Nm; 0,040 Nm con asse stagno - with proof shaft; *(1)

Momento d'inerzia - Moment of inertia: 40 g cm²

Vita dei cuscinetti - Bearings life: 5 x 10⁹ giri (minimo) - rev. min.

Peso - Weight: ~ 0,3 kg

CARATTERISTICHE ELETTRICHE - ELECTRICAL SPECIFICATIONS

Frequenza in uscita - output frequency: fino a 300 kHz / up to 300 kHz

Sincronismo di zero - Synchronous index output: Su canale A predefinito - on A default B - A+B a richiesta - B - A+B optional

Assorbimento in corrente - Supply current without load: 150 mA max.

Protezione - Protection: contro il cortocircuito (solo elettronica LD2 e PP2); short circuit protection, no limit duration (only output LD2 and PP2)
contro inversione di polarità (escluso 5V, 5/28V); against inversion of polarity (except 5V, 5/28V)

MATERIALI UTILIZZATI - MATERIALS

Corpo - Flange: in alluminio anticorrosivo - aluminium non corroding

Custodia - Housing: Poliammide 6 (PA6); Polyamid 6 (PA6)

CARATTERISTICHE AMBIENTALI - ENVIRONMENTAL SPECIFICATIONS

Temperatura di lavoro - Operating temperature range: -10°C ÷ +70°C

Temperatura di stoccaggio - Storage temperature range: -30°C ÷ +85°C

Umidità relativa - Relative humidity: 98% RH senza condensazione - RH without condensing

Vibrazioni - Vibrations: 10 g (da 10 a 2.000 Hz) - (From 10 up to 2.000 Hz)

Schock - Schock: 20 g (per 11 ms) - (for 11 ms)



CODICE DI ORDINAZIONE - ORDERING CODE

TS XXX . XXX . XXXX . XXXXX . X . XX . XX,XX . XXnn . XXX-XXXX . Xnnn

Custom

MODELLO - TYPE

TS 580 bidirezionale - bidirectional
TS 581 bidirez. + zero - bidirectional + index

MONTAGGIO - ASSEMBLY

F1 Flangia Quadra - Square flange (TK40)
F2 Flangia Quadra - Square flange (TK45)
F3 Flangia Quadra - Square flange (TK50)
SG1 Servo-Graffe - Servo-clip (TK50)
SG2 Servo-Graffe - Servo-clip (TK45)
SG3 Servo-Graffe - Servo-clip
S1 Flangia Servo - Servo Flange
S2 Flangia Servo - Servo Flange (TK45)
FRE Flangia REO - REO 444 Flange (TK50)

IMPULSI GIRO - PULSE RATE

4 - 25 - 50 - 60 - 100 - 140 - 150 - 200 - 250 - 300
- 360 - 400 - 500 - 600 - 625 - 635 - 720 - 1000 -
1024 - 1200 - 1250 - 1440 - 1500 - 1600 - 1800 -
2000 - 2048 - 2500 - 3600 - 4096 - 5000

Alimentazione (Vdc) - Voltage supply

5 +5 V ± 5 %
5/28 +5 ÷ 28 V
11/30 +11 ÷ 30 V

Frequenza in uscita - Output frequency

S da - from 0 a - up to 100 kHz
V da - from 0 a - up to 300 kHz

Grado di protezione - Protection class

K4 IP 64 (EN60529) (F1-F2-F3-SG1-SG2-SG3-S1-S2-FRE)
K5 IP 65 (EN60529) (F1-F3-SG1-S1-FRE)
K6 IP 66 (EN60529) (F1-F3-SG1-S1-FRE)

CIRCUITI DI USCITA - OUTPUT CIRCUITS

S NPN standard (resistenza di pull-up inclusa - resistor included)
OC NPN open collector
P PNP (resistenza di pull-down inclusa - resistor included)
OP PNP open collector

PP2-5 Push-Pull 5 V output solo - only 5 V

PP2-1130 Push-Pull 11/30 Vcc output (solo con alimentazione 11/30 - only with voltage supply 11/30 V)

PP2-528 Push-Pull 5/28 Vcc output (solo con alimentazione 5/28 - only with voltage supply 5/28 V)

LD Line driver RS422 (26LS31) solo - only 5 V

LD2-5 Line driver 5 Vcc output solo - only 5 V

LD2-1130 Line driver 11/30 Vcc output (solo con alimentazione 11/30 V - only with voltage supply 11/30 V)

LD2-528 Line driver 5/28 Vcc output (solo con alimentazione 5/28 V - only with voltage supply 5/28 V)

CONNESSIONI ELETTRICHE - ELECTRICAL CONNECTIONS

OUTPUT: S ; P ; OC ; OP ; PP2 ; LD ; LD2

PLnn pressacavo radiale con cavo da 1 a 6 m; radial cable gland with cable 1 ÷ 6 m long

L 07 connettore circolare militare radiale a 7 poli; on 7 pins radial MIL connector (TYPE "A", "B")

L 10 connettore circolare militare radiale a 10 poli; on 10 pins radial MIL connector (TYPE "C")

R1 conn. circolare radiale antiorario a 12 poli; on 12 pins radial "contact" connector (TYPE "D" - CCW)

nn Lunghezza cavo - Cable length (es. PL10 = 1 m. ... PL60 = 6 m)

Nota: L10: solo versione TS581 con elettronica LD, LD2

Nota: L10: only for TS581 with LD, LD2 electronic output

Albero - Shaft

6 Ø 6 mm (Flangia-Flange F1- F2 - F3 - SG1 - SG2 - SG3 - S1 - S2)

8 Ø 8 mm (Flangia-Flange F1- F2 - F3 - SG1 - SG2 - S1 - S2)

9,52 Ø 9,52 mm (Flangia-Flange F1- F2 - F3 - SG1 - SG2 - S1 - S2)

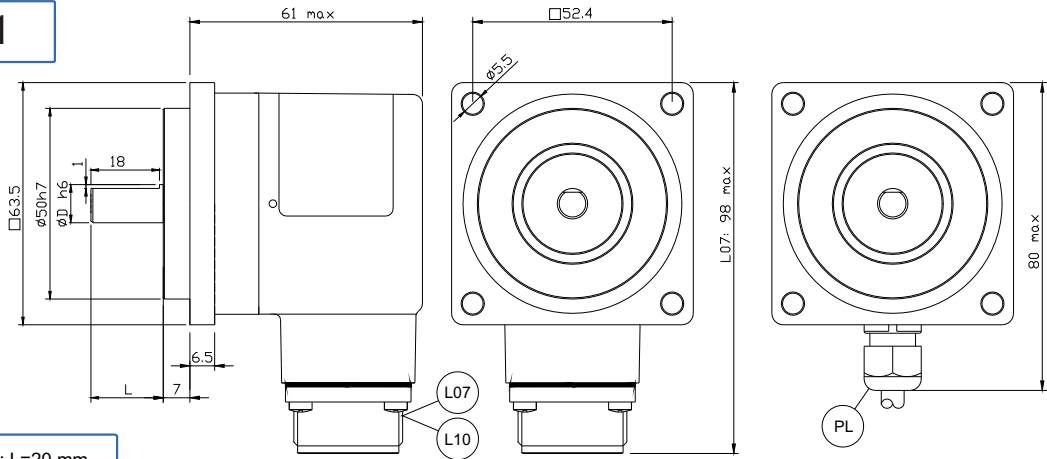
10 Ø 10 mm (Flangia-Flange F1- F2 - F3 - SG1 - SG2 - S1 - S2)

11 Ø 11 mm (Flangia-Flange FRE - SG1)

11R Ø 11 mm (Flangia-Flange FRE - SG1)

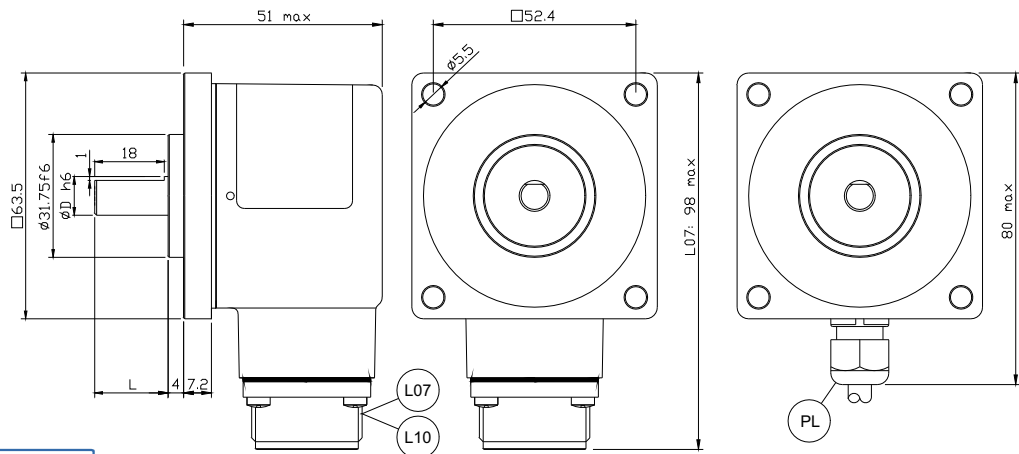
*(1) Valore indicativo - Not a test parameter, information only

Flangia F1



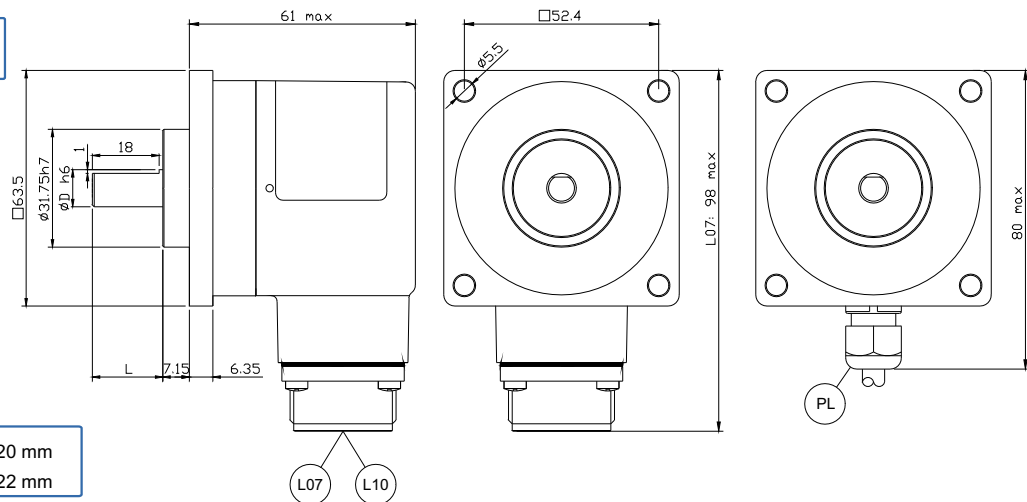
Albero Ø 6,8,10 : L=20 mm
Albero Ø 9,52 : L=22 mm

Flangia F2



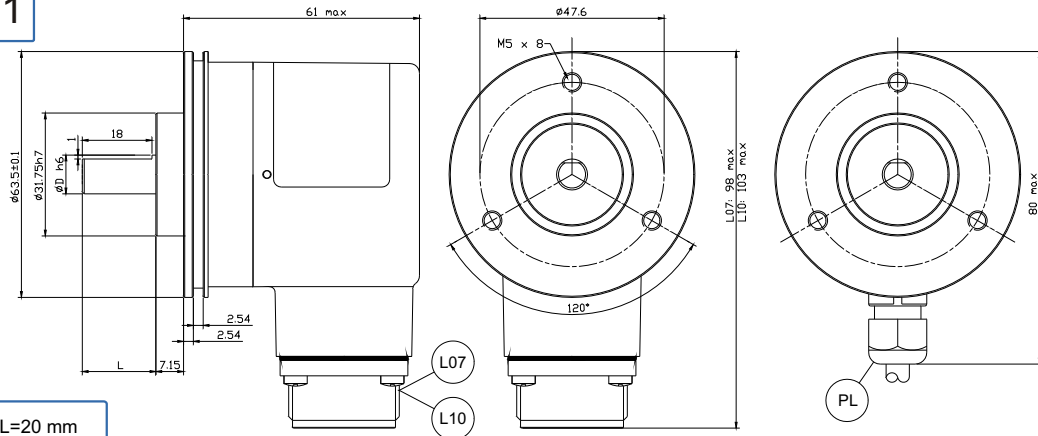
Albero Ø 6,8,9.52,10 : L=20 mm

Flangia F3



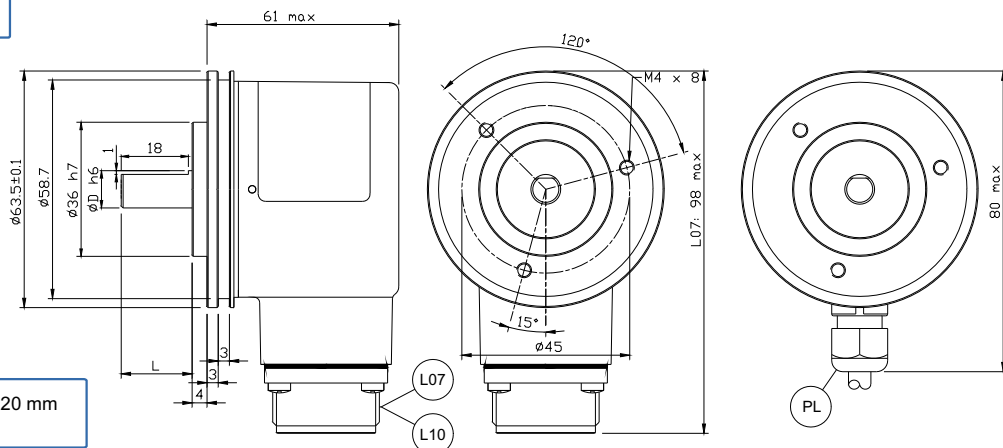
Albero Ø 6,8,10 : L=20 mm
Albero Ø 9,52 : L=22 mm

Flangia SG1



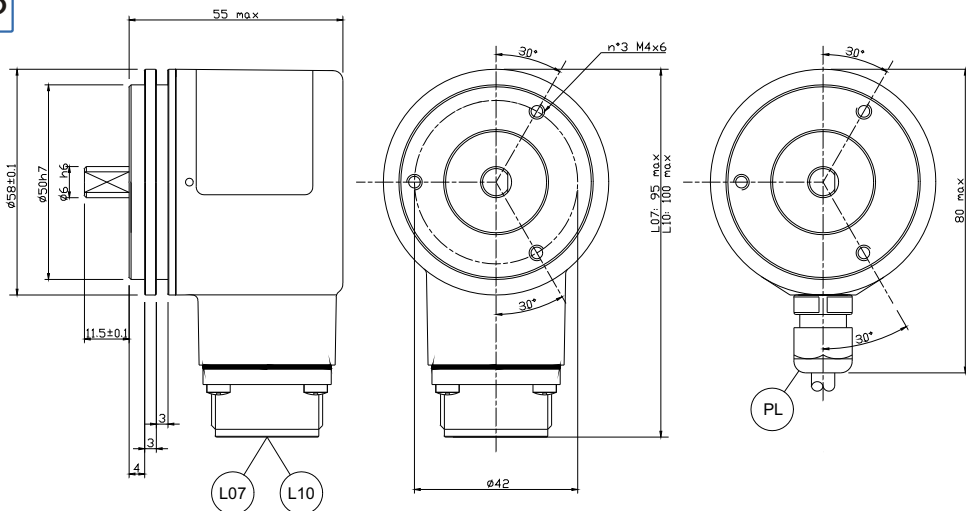
Albero ϕ 6,8,10 : L=20 mm
Albero ϕ 9,52 : L=22 mm
Albero ϕ 11 cod. 11R : L=20 mm

Flangia SG2

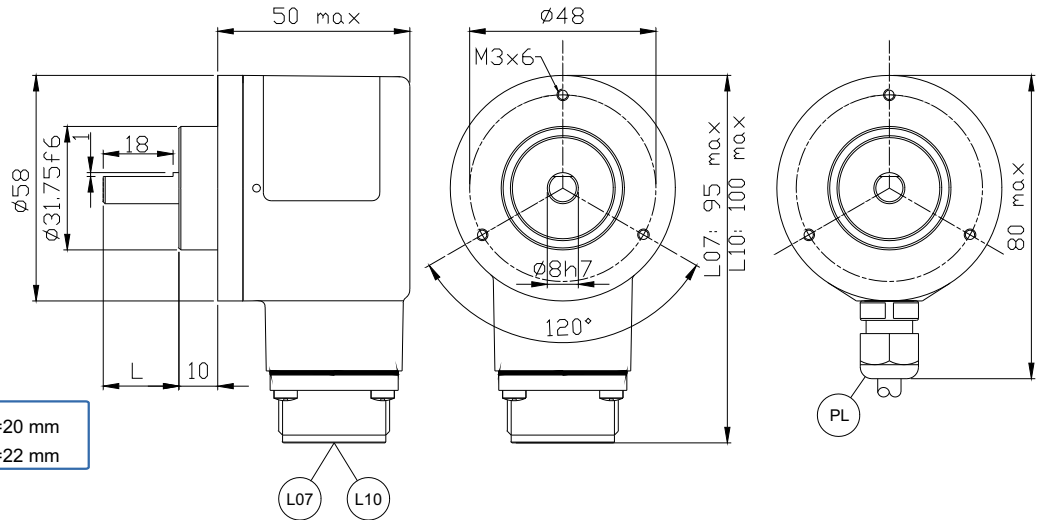


Albero ϕ 6,8,9,52,10 : L=20 mm

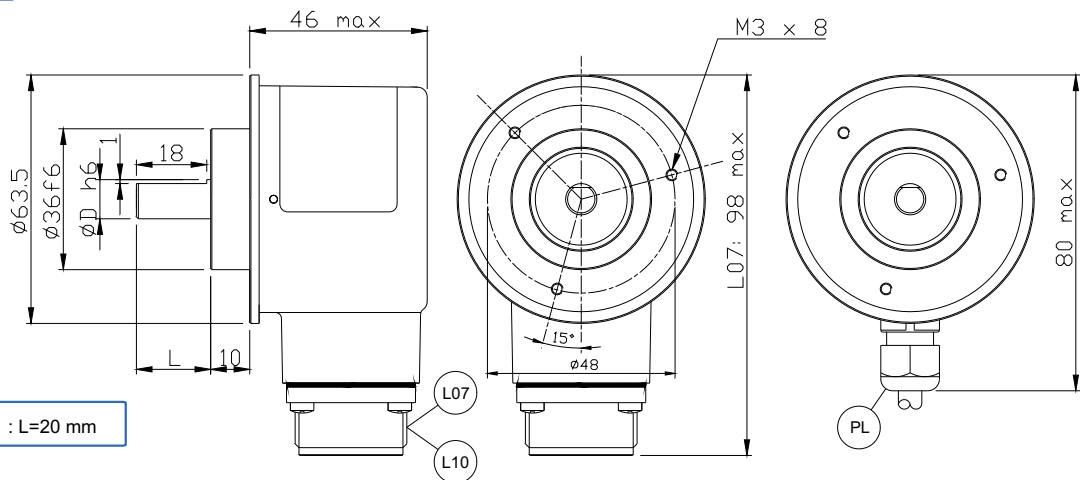
Flangia SG3



Flangia S1



Flangia S2



Flangia FRE

