

1700 & 1750 Toggle Switches 16A 250Vac Single and Double Pole



- ▶ Nylon toggle switches
- ▶ Ratings up to 20A, 250V ac
- ▶ Single and double pole
- ▶ Wide choice of terminals
- ▶ Choice of circuit options including 3 position
- ▶ Flat & round actuator options

Approvals and specifications



16(4)A 250Vac T85



UL 20A 250Vac Non Ind (Single pole)
UL 16A 250Vac Non Ind (Double pole)
UL CSA (2 pos types) 250Vac 1hp, 125Vac 1/2hp
UL CSA (3 pos types) 250Vac 1/2hp, 125Vac 1/4hp
CSA 16A 250Vac Non Ind
UL 85°C, file E45221, CSA file LR10990
UL and CSA N/A on momentary types

Selective "A, B, C" and "OFF, A, A+B" circuits at 5 amp also available.
3mm contact gap except where marked μ .
Technical data on pages 4 & 5.

toggle
switches

C 1750 H O - - -

TERMINAL FUNCTION ACTUATOR BODY OPTIONS

TERMINAL	FUNCTION		ACTUATOR
C 6.3 x 0.8	Single pole 1700 	Double pole 1750 	H 16.4
H 4.8 x 0.8	1710 μ 	1760 μ 	R 13.8 The switch is on between centre terminals (2 & 5) and the terminals over which the lever is positioned.
K 2.8 x 0.8	1720 μ 	1770 μ 	
T Solder	1721 μ 	1722 μ 	
X PCB 0.8 Sq			



C1700R --



C1700H --



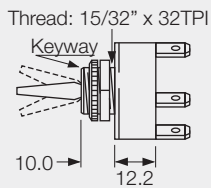
C1760R --



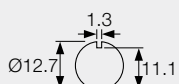
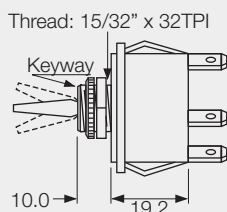
C1750H --

BODY

0
Single pole



0
Double pole



Panel hole (all types)
Panel thickness (Max)
Both nuts - 3.5mm
Less backnut - 6.5mm

OPTIONS

Neck Seal A0539M0AAA

Material - Nitrile
(H & R Actuators)
Actuator visible



Cover A1080M0AAA

Material - EPDM
(R Actuator only)



Cover A0331M0AAA

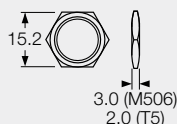
Material - PVC
(R Actuator only)



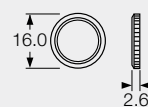
Covers have internal nylon nuts

Fixing nuts (Standard is M506 & T92)

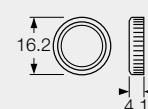
T5 Hex brass
M506 Hex nylon



T92 Knurled brass -
slotted



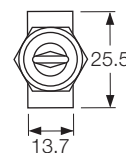
M279 Knurled nylon



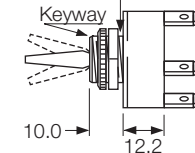
DIMENSIONS (mm)

Single Pole

(C terminals shown)



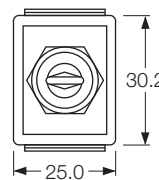
Thread: 15/32" x 32TPI



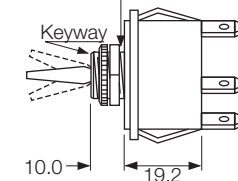
Optional
F00232PAAA
plate SP or DP

Double Pole

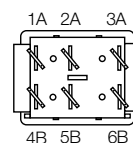
(C terminals shown)



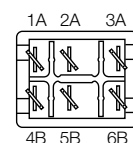
Thread: 15/32" x 32TPI



Without barrier



With barrier



Optional terminal barrier M441.