

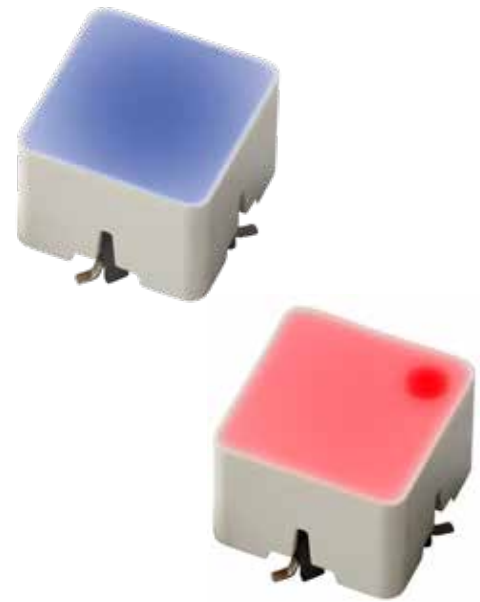
Foilmec™ 1YS/1YAS

Square cap • for under overlay • illumination option



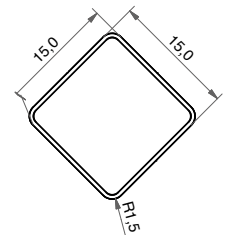
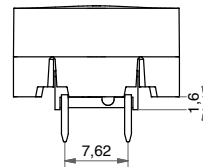
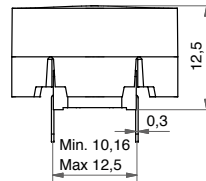
DISTINCTIVE FEATURES

- Square cap 15.0 x 15.0 mm
- h=12.5 mm
- Round corners, flat surface
- With or without spot illumination
- Illumination with LEDs on PCB

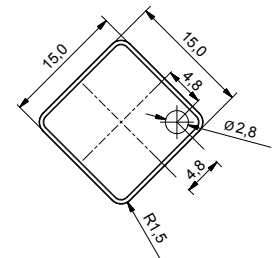
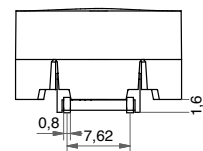
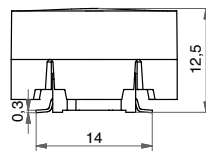


SWITCH SPECIFICATIONS : see Multimec® 5 series.

5E+1YS - TH



5E+1YAS - SMD



ERMEC, S.L. BARCELONA
C/ Francesc Teixidó, 22
08918 Badalona
(España)
Tel.: 93.450.160.00

Tel.: (+34) 902 450 160
Fax: (+34) 902 433 088
info@ermec.com
www.ermec.com

ERMEC, S.L. MADRID
c/Puerto Rico, 4
28220 Majadahonda
(España)
Tel.: 91.828.56.51

PORTUGAL
portugal@ermec.com
BILBAO
bilbao@ermec.com

Foilmec™ 1YS/1YAS

Square cap • for under overlay •
illumination option



BUILD YOUR PART NUMBER

ILLUMINATED

5E

SERIES

MOUNTING

ACTUATION FORCE

CAP

COLOR

TH9 through-hole
SH9 surface mount

20 2.0N
35 3.5N
65 6.5N

1YS
1YAS

0616 white cap with
frosted white lens

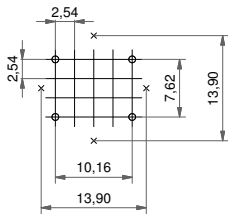
NOTICE : Other versions : Please refer to www.apem.com for information on the 3E series version - 1Y



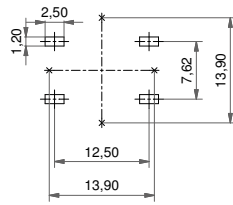
MOUNTING

- Panel cut-out : min. 16.0 x 16.0 mm
- Switch spacing AxB : min. 17.0 x 17.0 mm

PCB LAYOUT WITH LED PLACEMENT



5E+1YS/1YAS - TH



5E+1YS/1YAS - SMD



MATERIALS

- Cap : ABS UL94HB
- Lens : polycarbonate UL94HB

ERMEC
www.ermec.com
ERMEC, S.L. BARCELONA
C/ Francesc Teixidó, 22
08918 Badalona
(España)
Tel.: 93.450.160.00

Tel.: (+34) 902 450 160
Fax: (+34) 902 433 088
info@ermec.com
www.ermec.com

ERMEC, S.L. MADRID
c/Puerto Rico, 4
28220 Majadahonda
(España)
Tel.: 91.828.56.51

PORTUGAL
portugal@ermec.com
BILBAO
bilbao@ermec.com