



- Modern, patented design
- Lightweight
- Anti-tamper wire seal hole as standard

SPECIFICATIONS

- APEM SAS patented design
- Operating temperature : -20°C to +55°C
- Storage temperature : -55°C to +85°C

MATERIALS

- Support plate : thermoplastic
- Cap : thermoplastic

Switch guards are designed to prevent accidental lever operation on switches with $\varnothing 11,9 (.468)$ or $\varnothing 12 (.472)$ threaded bushing and lever length 17,5 (.688) outside bushing.

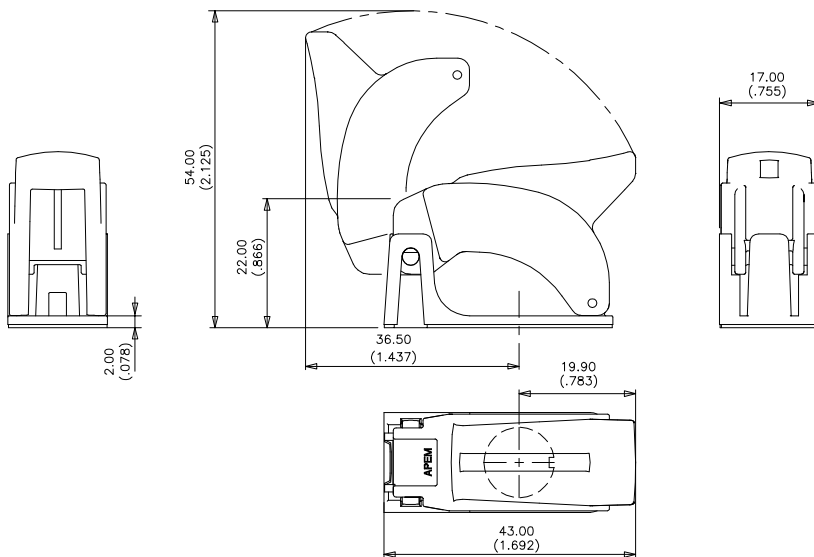
When the guard is raised, the lever can be operated freely.

When the guard is fully depressed, the lever is locked in a stable position.

Please note that these guards are not intended to reset the actuator in the desired position.

Note : For correct switch operation, the switch guard should be adjusted properly (see "Mounting" on last page)

DIMENSIONS



Note : Holes for wiring a seal are standard on all models.

Tolerance : The general tolerance for dimensions in this brochure is $\pm 0,3 (.012)$.

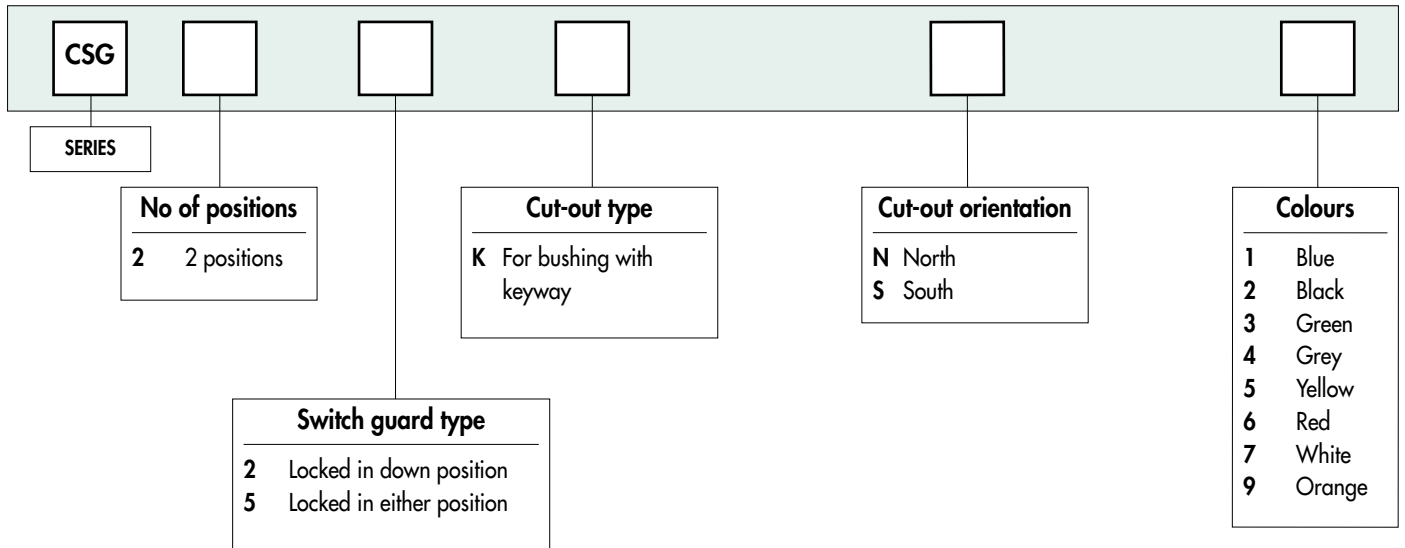
Dimensions, specifications and data shown in this brochure are subject to change without notice.

CSG series

Switch guards for switch series 5000M - 600H

New!

Overview



Dimensions : first dimensions are in mm while inches are shown as bracketed numbers.



NOTICE : please note that not all combinations of above numbers are available. Refer to the following pages for further information.



Mounting accessories : supplied with the switch or to order separately (see Section I of full-line catalogue)



Packaging unit : 40 pieces



ERMEC, S.L. BARCELONA
C/ Francesc Teixidó, 22
08918 Badalona
(España)

Tel.: (+34) 902 450 160
Fax: (+34) 902 433 088
info@ermec.com
www.ermec.com

ERMEC, S.L. MADRID
c/Mejorada, 17,1ªPlá.Of.D4
28850 Torrejón de Ardoz
(España)

PORTUGAL
portugal@ermec.com

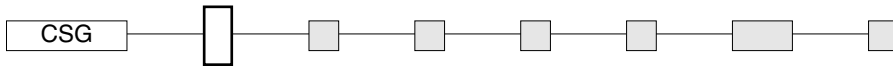
BILBAO
bilbao@ermec.com

CSG series

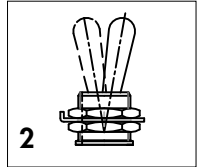
New!

Switch guards for switch series 5000M - 600H

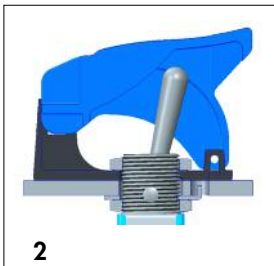
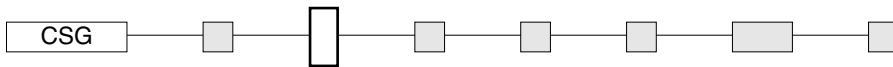
NUMBER OF POSITIONS



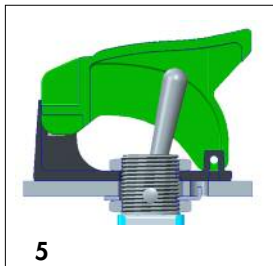
2 2 positions



SWITCH GUARD TYPE

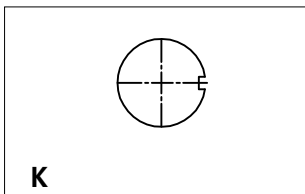
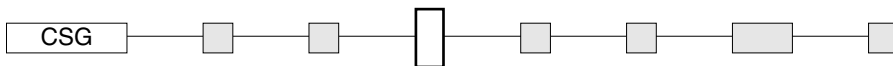


Locked in down position



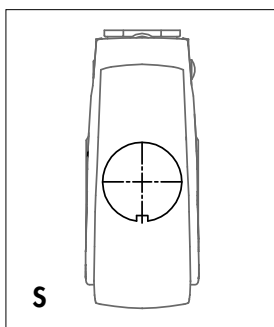
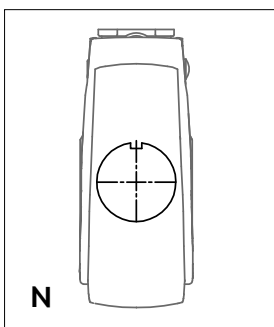
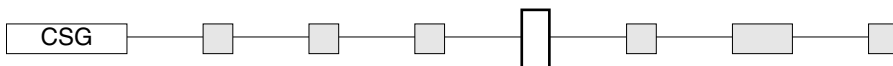
Locked in either position

CUT-OUT TYPE



For bushing with keyway

CUT-OUT ORIENTATION

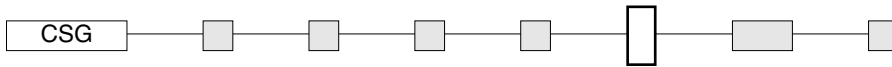


CSG series

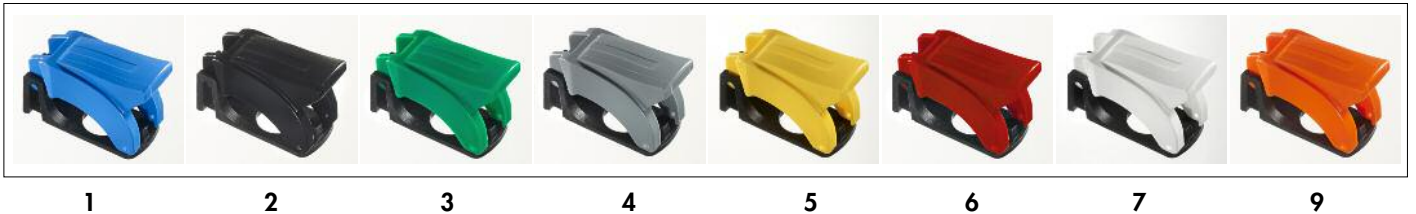
Switch guards for switch series 5000M - 600H

New!

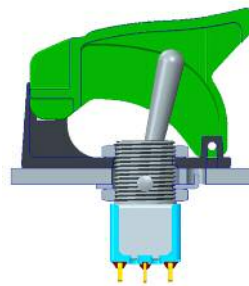
COLOURS



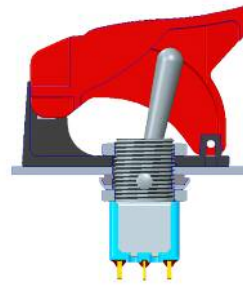
1 : blue - 2 : black - 3 : green - 4 : grey - 5 : yellow - 6 : red - 7 : white - 9 : orange



MOUNTING



Standard



With K sealing option

CSG1407-A