

AV series

Security pushbutton switches suitable for 250 VAC • approved according to EN 61058-1



DISTINCTIVE FEATURES

Mains switches approved to EN61058-1

Ø 16 (.629), 19 (.748) and 22 mm (.866)

Latching

Three terminal types



ENVIRONMENTAL SPECIFICATIONS

- Optional front panel sealing : IP65 according to IEC 60529
- Operating temperature : -30 °C to +70 °C (-22 °F to +158 °F)



ELECTRICAL SPECIFICATIONS

- Max. current/voltage rating with resistive load : 1 A 250 VAC
- Initial contact resistance : 50 mΩ max.
- Insulation resistance : 1,000 MΩ min. at 500 VDC
- Dielectric strength :
2,000 Vrms 50 Hz min. between terminals
500 Vrms 50 Hz between terminals and frame
- Electrical life : 10,000 cycles at 1 A 250 VAC



GENERAL SPECIFICATIONS

- Torque : 1.5 Nm min. - 4 Nm max. applied to nut
- Panel thickness :
Ø 16 : 1 (.039) to 6 mm (.236) max.
Ø 19 and Ø 22 : 1 (.039) to 9 mm (.354) max.
- Low level or mechanical life : 200,000 cycles
- Hand soldering : 300 °C (572 °F), 4 sec. max.



MATERIALS

- Case : PA4-6, UL94-V0
- Contacts : silver (A)
- Bushing & actuator : see following pages

APEM products may be recycled at end-of-life for the re-claiming of valuable metal components.

The company reserves the right to change specifications without notice.



AV series

Security pushbutton switches suitable
for 250 VAC • approved according to EN 61058-1

AGENCY APPROVAL



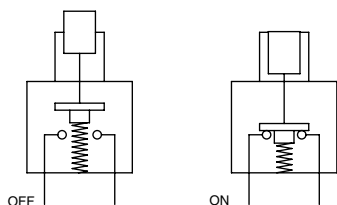
EN61058-1 1A 250 VAC
All models



marked



ELECTRICAL FUNCTIONS



PANEL MOUNTING

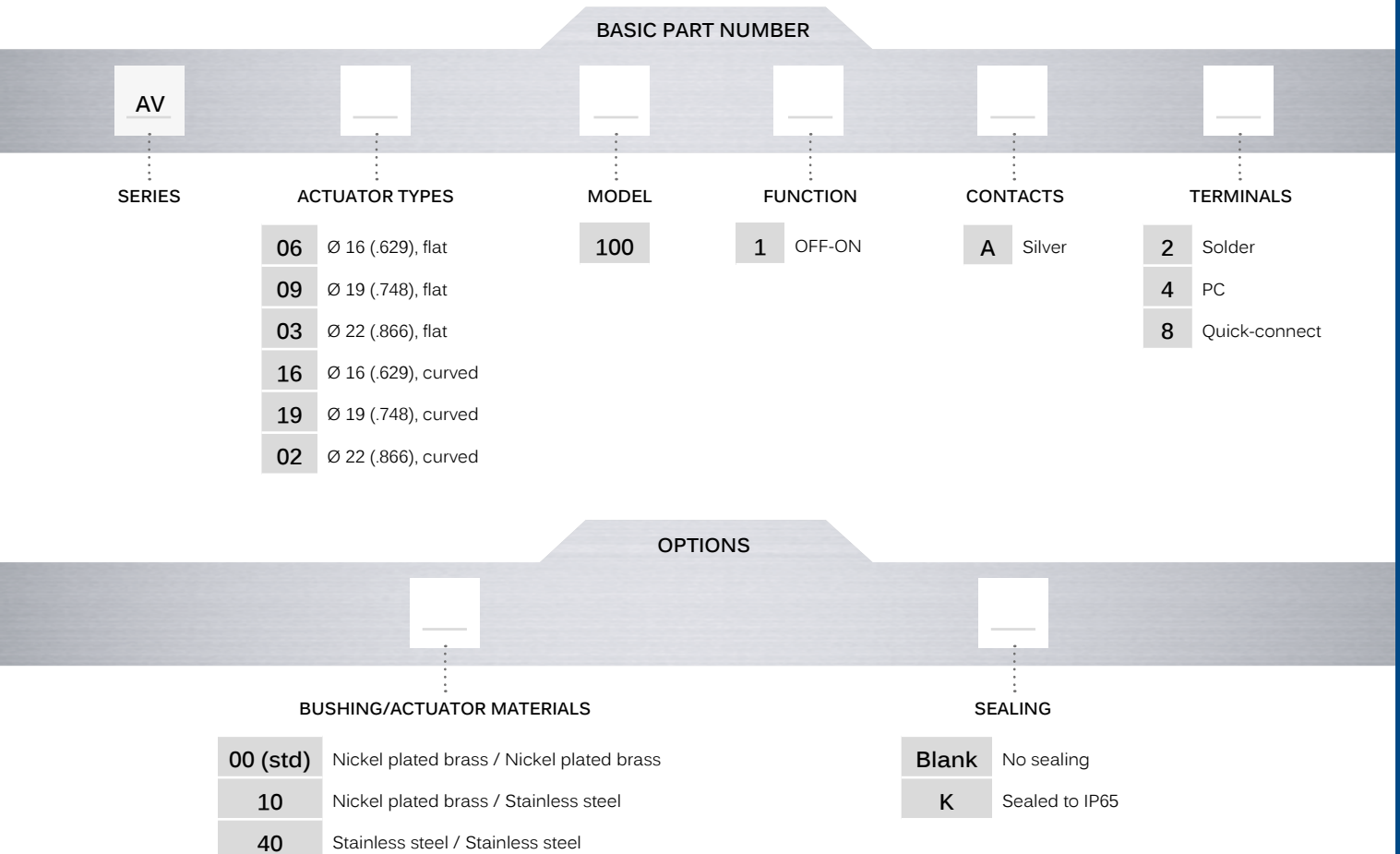
- Panel cut-out :
 \varnothing 16.2 mm (.755)
 \varnothing 19.2 mm (.755)
 or \varnothing 22.2 mm (.874)

AV series

Security pushbutton switches suitable for 250 VAC • approved according to EN 61058-1



BUILD YOUR PART NUMBER



ABOUT THIS SERIES

On the following pages, you will find successively basic part numbers of switches and options in the same order as in above chart.

- Notice:** please note that not all combinations of above numbers are available. Refer to the following pages for further information.
- Mounting accessories:** standard hardware supplied : 1 hex nut. Standard and special hardware is presented in the "Hardware" section of website.



ERMEC, S.L. BARCELONA
C/ Francesc Teixidó, 22
08918 Badalona SPAIN

Tel. +34 902 450 160
info@ermec.com
www.ermec.com

ERMEC, S.L. - MADRID
C/ Puerto Rico, 4
28222 Majadahonda (Madrid) SPAIN

bilbao@ermec.com
portugal@ermec.com

AV series

Security pushbutton switches suitable for 250 VAC • approved according to EN 61058-1

Ø 16 (.629) - FLAT OR CURVED ACTUATOR SOLDER LUG TERMINALS



Flat actuator			
AV061001A2	OFF	ON	
Curved actuator			
AV161001A2	OFF	ON	

Product shown in OFF position.

Ø 19 (.748) - FLAT OR CURVED ACTUATOR SOLDER LUG TERMINALS



Flat actuator			
AV091001A2	OFF	ON	
Curved actuator			
AV191001A2	OFF	ON	

Product shown in OFF position.

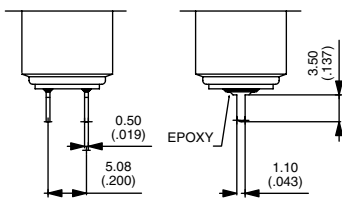
Ø 22 (.866) - FLAT OR CURVED ACTUATOR SOLDER LUG TERMINALS



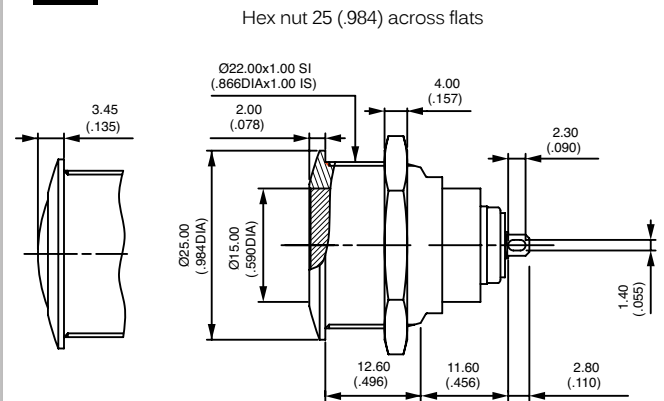
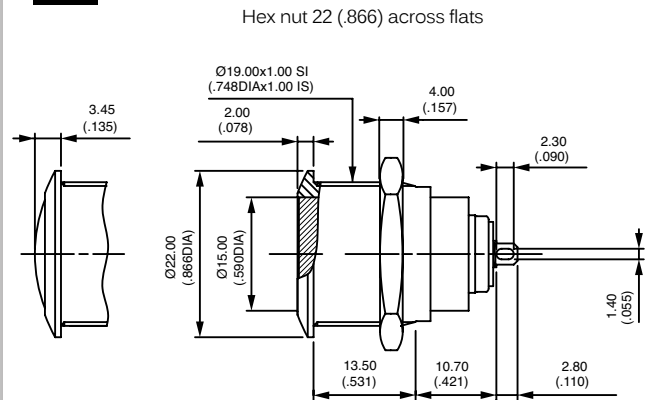
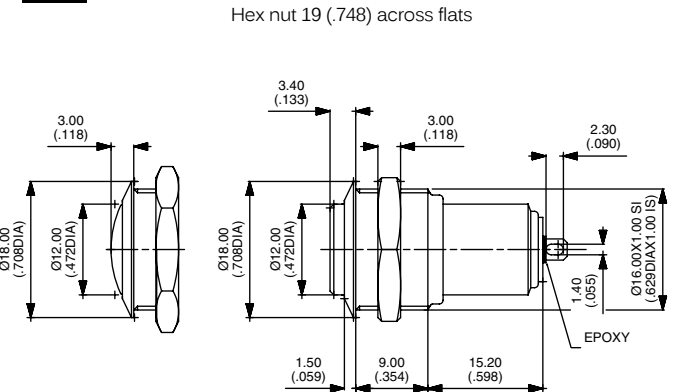
Flat actuator			
AV031001A2	OFF	ON	
Curved actuator			
AV021001A2	OFF	ON	

Product shown in OFF position.

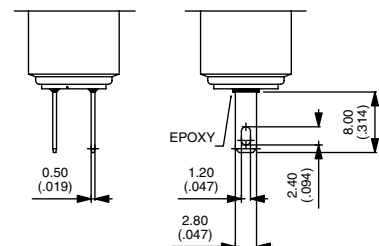
STRAIGHT PC TERMINALS



Replace 2 with 4 at the end of the model numbers shown above.



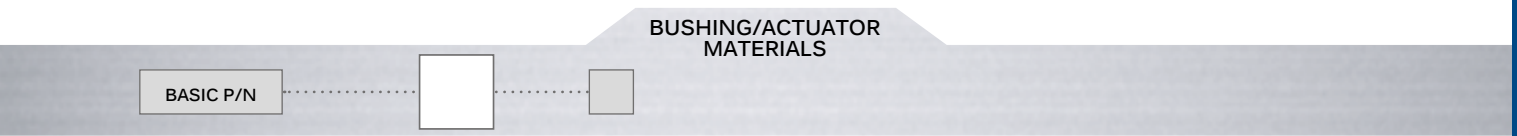
QUICK-CONNECT TERMINALS



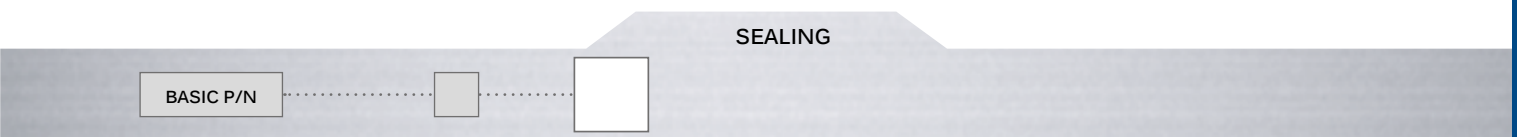
Replace 2 with 8 at the end of the model numbers shown above.

AV series

Security pushbutton switches suitable for 250 VAC • approved according to EN 61058-1

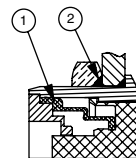


CODE	BUSHING	ACTUATOR
00 (std)	Nickel plated brass	Nickel plated brass
10	Nickel plated brass	Stainless steel
40	Stainless steel	Stainless steel



Blank No sealing
K Front panel sealing to IP65

OPTION K



- ① - elastomeric membrane
- ② - external gasket