

10400 series

Professional pushbutton switches •
threaded bushing Ø 10 mm



DISTINCTIVE FEATURES

Threaded bushing dia. 10 (.393)

CECC approved

Available with black finish



ELECTRICAL SPECIFICATIONS

- Max. current/voltage rating with resistive load : 3 A 24 VDC
- Minimum load : 100 µA 10 mV
- Initial contact resistance : 10 mΩ max.
- Insulation resistance : 1,000 MΩ min. at 5 00VDC
- Dielectric strength :
1,000 Veff. 50 Hz min. between terminals of the same pole
2,000 Veff. 50 Hz min. between terminals and frame
2,000 Veff. 50 Hz min. between terminals of adjacent poles
- Electrical life : 50,000 cycles



GENERAL SPECIFICATIONS

- Torque : 1.50 Nm (1.106 Ft.lb) max. applied to nut
- Operating temperature : -40 °C to +85 °C (-40 °F to +185 °F)
- Max. panel thickness : 3.5 mm (.138)



MATERIALS

- Case : diallyphthalate (DAP)
- Actuator : brass, chrome plated
- Bushing : brass, nickel plated
- Housing : brass, nickel plated
- Contacts :
- silver
- gold plated silver
- Terminal seal : epoxy

APEM products may be recycled at end-of-life for the re-claiming of valuable metal components.

The company reserves the right to change specifications without notice.



10400 series

Professional pushbutton switches • threaded bushing Ø 10 mm

AGENCY APPROVAL



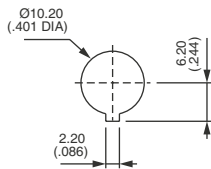
CECC 96401-001

Availability : consult factory for details of approved models.

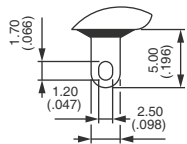
Marking : to order switches marked CECC, add "CECC" to model number.



PANEL CUT-OUT

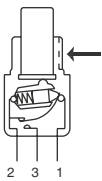


TERMINALS

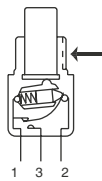


ELECTRICAL FUNCTIONS

→ KEYWAY



Single pole



Double pole



ABOUT THIS SERIES

Complete part numbers are shown on the following page.

- Sealing boots** are available to protect the switches against dust and water. See "Sealing boots" section of website.
- Mounting accessories** : standard hardware supplied with all models : 1 knurled nut, 1 hex nut, 1 locking ring and 1 lockwasher. It is presented in the "Hardware" section of website.

10400 series

Professional pushbutton switches • threaded bushing Ø 10 mm

SOLDER LUG TERMINALS - SINGLE POLE



Silver contacts

104350003

Gold plated silver contacts

104350108

A
1-2

ON

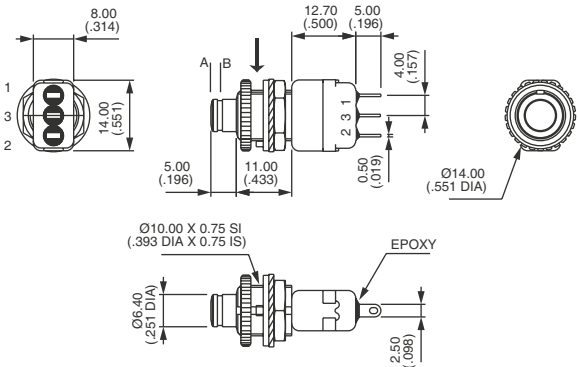
B
1-3

MOM

ON

MOM

→ KEYWAY



SOLDER LUG TERMINALS - DOUBLE POLE



Silver contacts

104450003

Gold plated silver contacts

104450108

A
1-2
5-4

ON

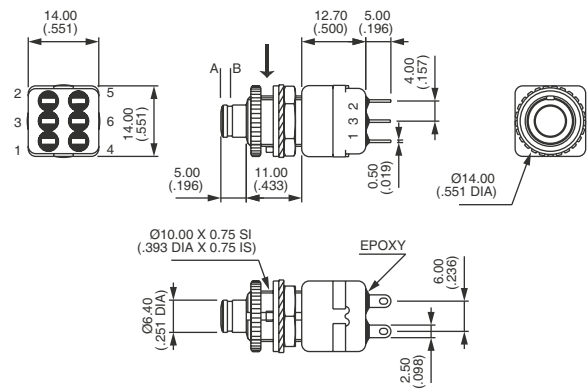
B
1-3
5-6

MOM

ON

MOM

→ KEYWAY



Matt black finish : part numbers on request.

AGENCY APPROVAL

BASIC P/N



CECC CECC 96401-001

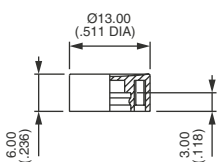
Blank No agency approval required.

Availability : consult factory for details of approved models.

Marking : to order switches marked CECC, please complete above box with CECC.

CAPS

Order separately.



U2600

For cap colors, replace last "0" by number :

- | | | | |
|-----|-----------|-----|--------|
| 1 | Blue | 6 | Red |
| 1/4 | Dark blue | 7 | Ivory |
| 2 | Black | 7/1 | White |
| 3 | Green | 9 | Orange |
| 4 | Grey | | |
| 5 | Yellow | | |