

AV series

Security pushbutton switches •
Ø 16 mm • latching



DISTINCTIVE FEATURES

- Latching action
- 3 terminal types
- Panel sealing option



ENVIRONMENTAL SPECIFICATIONS

- Optional front panel sealing : IP65 according to IEC 60529
- Operating temperature : -30 °C to +70 °C (-22 °F to +158 °F)



ELECTRICAL SPECIFICATIONS

- Max. current/voltage rating with resistive load : 1 A 24 VDC
- Initial contact resistance : 50 mΩ max.
- Insulation resistance : 1 GΩ min. at 500 VDC
- Dielectric strength :
1,500 Vrms 50 Hz min. between terminals
1,000 Vrms 50 Hz between terminals and frame
- Electrical life : 40,000 cycles



GENERAL SPECIFICATIONS

- Torque : 5 Nm min. - 14 Nm max. applied to nut
- Panel thickness : 1 (.039) to 6 mm (.236) max.
- Low level or mechanical life : 200,000 cycles
- Hand soldering : 300 °C (572 °F), 5 sec. max.



MATERIALS

- Case : PA-6T, UL94-V0
- Contacts : silver (A), gold plated silver (AD) on request
- Bushing and actuator : see next page

The company reserves the right to change specifications without notice.

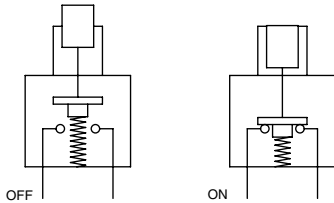


AV series

Security pushbutton switches •
 Ø 16 mm • latching



ELECTRICAL FUNCTIONS



MOUNTING

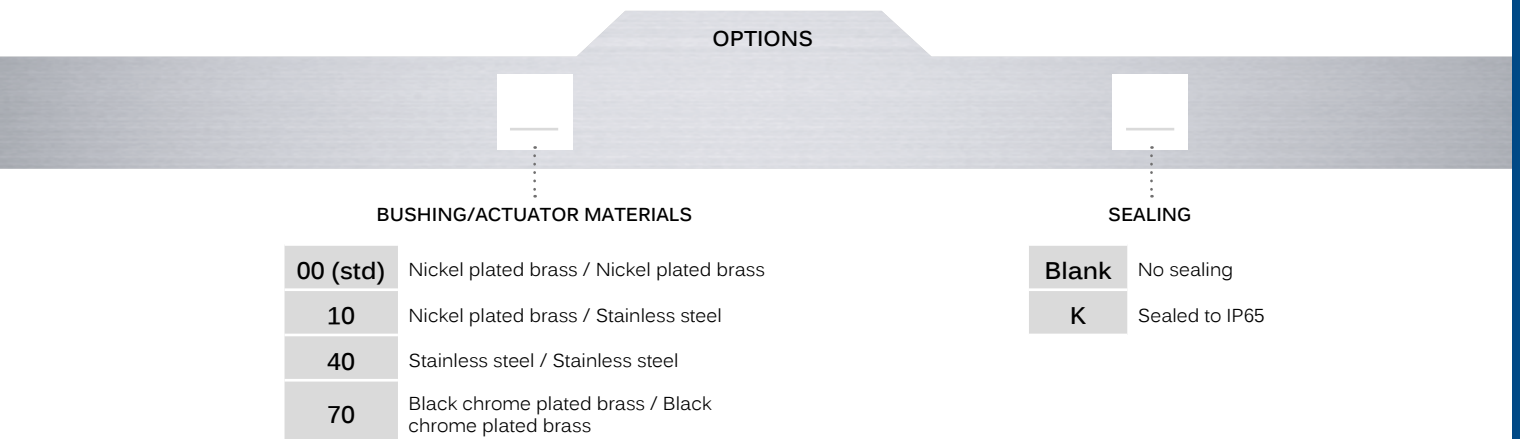
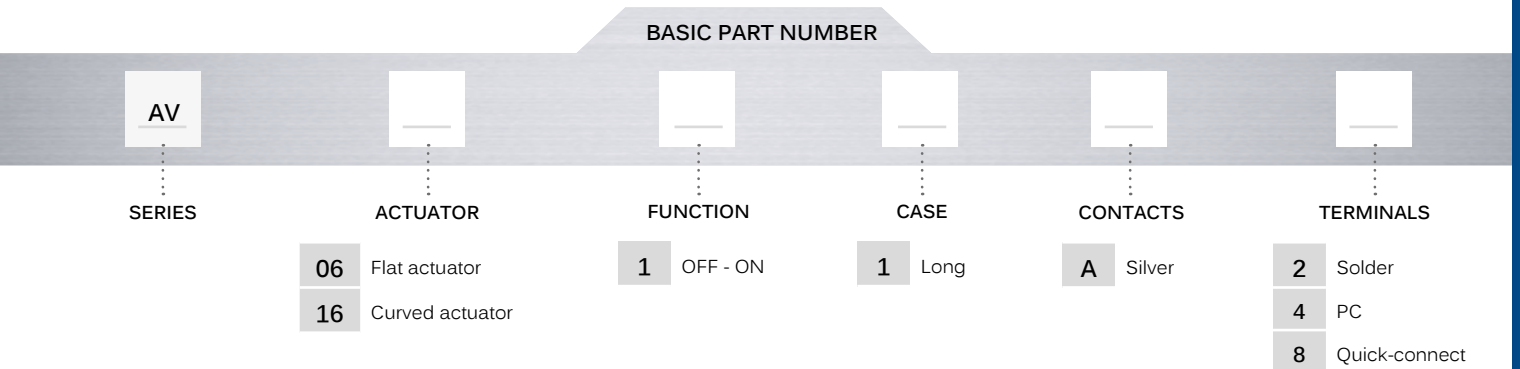
- Panel cut-out : Ø 16.2 mm (.637)
- Min. pitch for matrix mounting :
 24 mm x 24 mm (.944 x .944)

AV series

Security pushbutton switches •
Ø 16 mm • latching



BUILD YOUR PART NUMBER



ABOUT THIS SERIES

On the following pages, you will find successively basic part numbers of switches and options in the same order as in above chart.

Notice: please note that not all combinations of above numbers are available. Refer to the following pages for further information.

Mounting accessories: standard hardware supplied : 1 hex nut. Standard and special hardware is presented in the "Hardware" section of website.

AV series

Security pushbutton switches • Ø 16 mm • latching

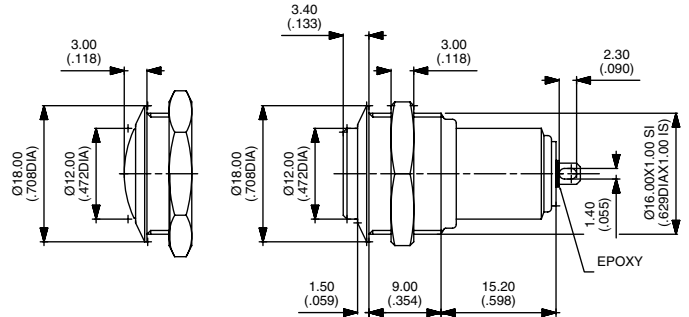
FLAT OR CURVED ACTUATOR SOLDER LUG TERMINALS



Flat actuator
AV0611A2 OFF ON

Curved actuator
AV1611A2 OFF ON

Hex nut 19 (.748) across flats



FLAT OR CURVED ACTUATOR - STRAIGHT PC OR QUICK-CONNECT TERMINALS



STRAIGHT PC TERMINALS

Flat actuator
AV0611A4 OFF ON

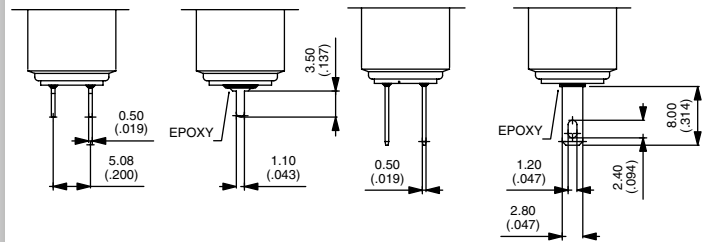
Curved actuator
AV1611A4 OFF ON

QUIK-CONNECT TERMINALS

Flat actuator
AV0611A8 OFF ON

Curved actuator
AV1611A8 OFF ON

Hex nut 19 (.748) across flats



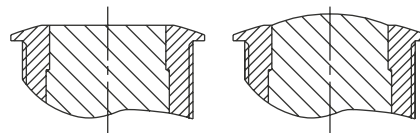
BUSHING/ACTUATOR MATERIALS

BASIC P/N



FLAT OR CURVED METAL ACTUATOR

| CODE | BUSHING | ACTUATOR |
|----------|---------------------------|---------------------------|
| 00 (std) | Nickel plated brass | Nickel plated brass |
| 10 | Nickel plated brass | Stainless steel |
| 40 | Stainless steel | Stainless steel |
| 70 | Black chrome plated brass | Black chrome plated brass |



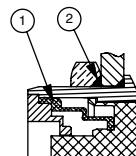
SEALING

BASIC P/N



Blank No sealing
 K Front panel sealing to IP65

OPTION K



① - elastomeric membrane
 ② - external gasket