

SMT TL series

Surface mount subminiature
washable toggle switches



DISTINCTIVE FEATURES

Tape and reel packaging

Reflow solderable

Available with positioning pins

Protected against electrostatic discharges (ESD) up to 10 KV

Washable



ENVIRONMENTAL SPECIFICATIONS

- Operating temperature : -40 °C to +85 °C (-40 °F to +185 °F)
- Moisture resistance : 21 days per IEC 512-6 test 11c
- Vibration resistance : 10-500 Hz / 10 g per IEC 512-4 test 6d
- Shock resistance : 50 g per IEC 512-4 test 6c



ELECTRICAL SPECIFICATIONS

- Max. current/voltage rating with resistive load :
0.4 VA 20 V max. AC or DC
- Minimum load : 10 mA 50 mV or 10 µA 5 VDC
- Initial contact resistance : 20 mΩ max
- Insulation resistance : 1,000 MΩ min. at 500 VDC
- Dielectric strength : 1,000 Vrms. 50 Hz min. between terminals and frame / 500 Vrms. 50 Hz min. between terminals
- Electrical life at full load :
 - 2 position switches : 60,000 cycles
 - 3 position switches : 30,000 cycles
- Static resistance : 10 KV (Schaffner equipment)



MATERIALS

- Case : high temperature plastic material UL94-V0
- Actuator : brass, nickel plated, with high temperature UL94-V0 plastic cap
- Ground plate and positioning pins : steel, tin plated
- Contacts : brass, gold plated
- Terminals : brass, with pure tin plating over nickel barrier

APEM products may be recycled at end-of-life for the re-claiming of valuable metal components.

The company reserves the right to change specifications without notice.



SMT TL series

Surface mount subminiature
washable toggle switches

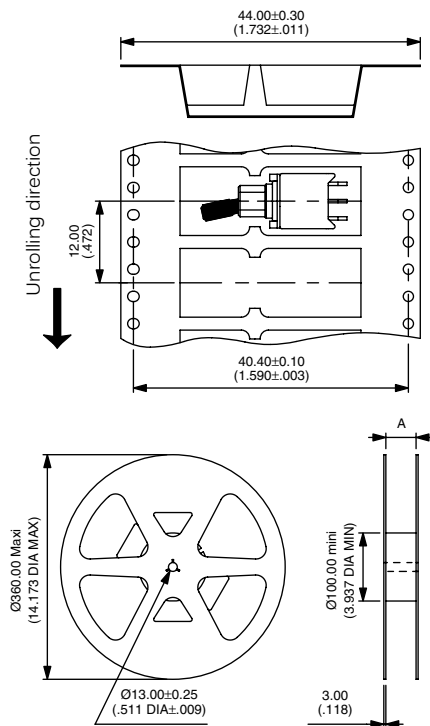


SOLDERING AND CLEANING

- Reflow soldering : infrared, vapor phase or infrared convection
- Washable per IEA-RS448-2 :
 - water + detergent - preferred
 - solvents
- Further information on reflow soldering : see "Technical information" on website.



PACKAGING

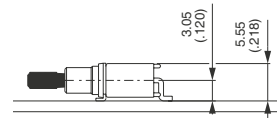


Tape width	24.00 (.944)	44.00 (1.732)
Reel (dimension A)	24.40 +2.00/0.00 (.960 +.078/.000)	44.40 +2.00/0.00 (1.748 +.078/.000)

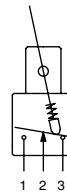
Standard packaging unit : 700 pieces
Tape meeting international standard IEC - Publication 286-3 (EIA481A)
Start leader : 400 mm min.



MOUNTING



ELECTRICAL FUNCTIONS



SMT TL series

Surface mount subminiature washable toggle switches

WITHOUT POSITIONING PINS



TL36WS84000
TL39WS84000
TL37WS84000
TL38WS84000
TL32WS84000

	III	II	I
TL36WS84000	ON	-	ON
TL39WS84000	ON	OFF	ON
TL37WS84000	MOM	OFF	MOM
TL38WS84000	ON	OFF	MOM
TL32WS84000	ON	-	ON

Also available for vertical mounting.

WITH POSITIONING PINS



TL36WS84065
TL39WS84065
TL37WS84065
TL38WS84065
TL32WS84065

	III	II	I
TL36WS84065	ON	-	ON
TL39WS84065	ON	OFF	ON
TL37WS84065	MOM	OFF	MOM
TL38WS84065	ON	OFF	MOM
TL32WS84065	ON	-	MOM

Also available for vertical mounting.

