



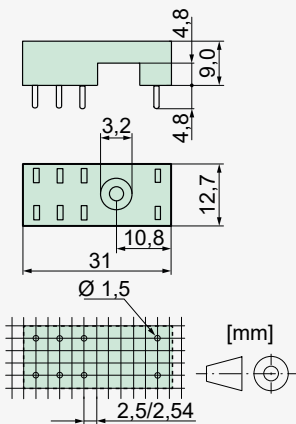
Print socket SRP-SGR2

Socket data

- With plastic retaining bracket
- Socket with print connections



Dimensions



Technical data

Rated current	2 x 8A
Rated voltage	300 VAC
Test voltage coil/contacts	4 000 Vrms
Insulation class IEC 60664-1	250 VAC
Creepage resistance	CTI 250
Weight	approx. 4 g
Ambient temperature	-40°C to +70°C
Packing unit	100 pcs
Approvals	UL, cUL
UL File	E113714

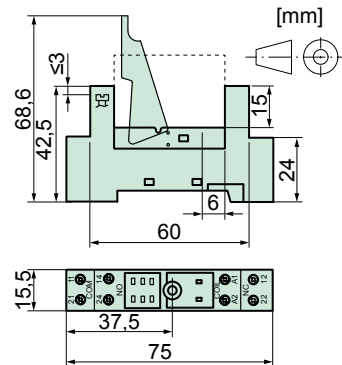
DIN rail socket SRD-SGR2

Socket data

- With plastic retaining bracket and marking tag (1 pc)
- Screw terminals
- Assembly on DIN rail 35 mm or single-hole mounting with M3 screw



Dimensions



Technical data

Rated current	2 x 8A
Rated voltage	300 VAC
Test voltage coil/contacts	4 000 Vrms
Insulation class IEC 60664-1	250 VAC
Creepage resistance	CTI 250
Weight	approx. 40 g
Ambient temperature	-25°C to +70°C
Connection cross-sections	

for wires 2 x 2,5 mm²

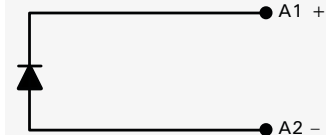
for wire end ferrules 2 x 1,5 mm²

Maximum torque	0,8 Nm
Packing unit	20 pcs
Approvals	UL, cUL
UL File	E113714

Modules für SRD-SGR2

Module SRD-SGR2-M01

- For DIN rail socket SRD-SGR2
- Free-wheeling diode 6 VDC to 230 VDC (+ at terminal A1)



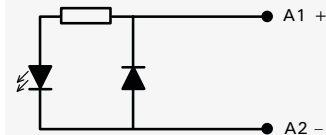
Module SRD-SGR2-M02

- For DIN rail socket SRD-SGR2
- Free-wheeling diode with red LED, 6 VDC to 24 VDC (+ at terminal A1)



Module SRD-SGR2-M03

- For DIN rail socket SRD-SGR2
- Free-wheeling diode with green LED, 6 VDC to 24 VDC (+ at terminal A1)



Module SRD-SGR2-M04

- For DIN rail socket SRD-SGR2
- Red LED with inverse-polarity protection, 6 VDC to 24 VDC (+ at terminal A1)



Module SRD-SGR2-M05

- For DIN rail socket SRD-SGR2
- Green LED with inverse-polarity protection, 6 VDC to 24 VDC (+ at terminal A1)

