

1427

1427

Characteristics ■ single pole
 ■ faston
 ■ snap-in mounting or center-fixing

Rating 250 VAC, 0.2 [0.2] A
 1E5
 250 VAC, 0.25 A

Dimensions (mm) various

Actuator ■ plunger

Approvals ENEC, cUL



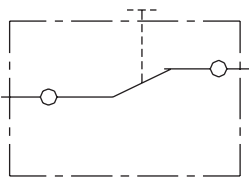
Preferred range switches

Ordering Reference	Illumination	Terminals	Mounting	Function	Actuator color	Length of plunger
1427-839.02 1551	without	tab	Snap-in	NC	White	17,5 mm

Specifications

Base / cover	PA
Plunger	PBPT
Mechanism	Single pole
Functions	Momentary normally closed
Contacts	Ag
Protection	IP 00
Mounting	Customised mounting
Tracking Resistance	PTI 250
Glow-wire	850°C

Circuit diagram circuit diagram



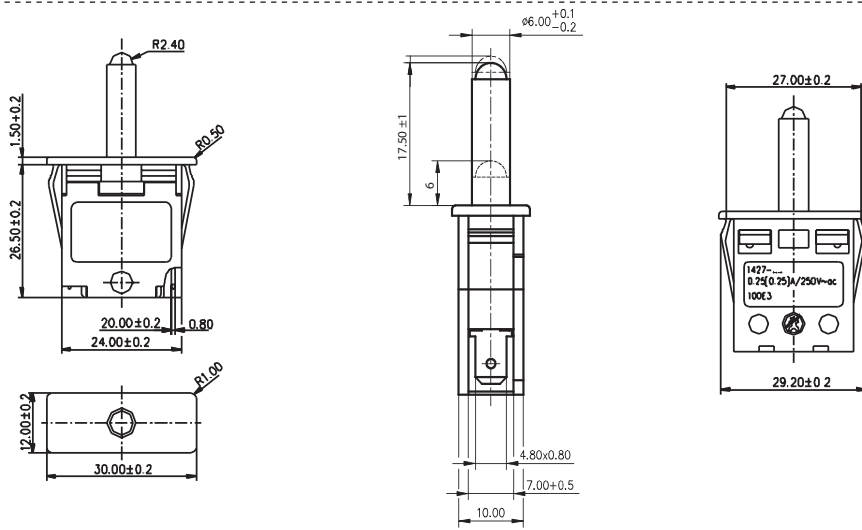
ERMEC, S.L. BARCELONA
 C/ Francesc Teixidó, 22
 08918 Badalona SPAIN

Tel. +34 902 450 160
 info@ermec.com
 www.ermec.com

ERMEC, S.L. - MADRID
 C/ Puerto Rico, 4
 28222 Majadahonda (Madrid) SPAIN

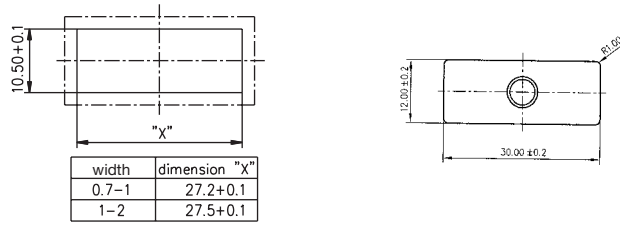
bilbao@ermec.com
 portugal@ermec.com

Dimensions



Operating Characteristics

1427 250 VAC, 0.2 [0.2] A
100.000 cycles T55



Standard Range

Ordering Reference	Illumination	Terminals	Mounting	Function	Actuator color	Length of plunger
1427-022.02 1511	Without	tab	Center-fixing	NC	White	17.0 mm
1427-132.02 1551	Without	tab	Snap-in	NC	Black	12.2 mm



ERMEC, S.L. BARCELONA
C/ Francesc Teixidó, 22
08918 Badalona SPAIN

Tel. +34 902 450 160
info@ermec.com
www.ermec.com

ERMEC, S.L. - MADRID
C/ Puerto Rico, 4
28222 Majadahonda (Madrid) SPAIN

bilbao@ermec.com
portugal@ermec.com