

3293

Characteristics	<ul style="list-style-type: none"> ■ single / double pole ■ on/off ■ faston ■ PCB terminals ■ customised mounting ■ momentary or latching
Rating	250 VAC, 8 (8) A, 1E4, T100 250 VAC, 10 (4) A, 1E4, T100
Dimensions (mm)	13.5 × 19
Actuator	<ul style="list-style-type: none"> ■ plunger ■ square 6 mm
Approvals	ENEC



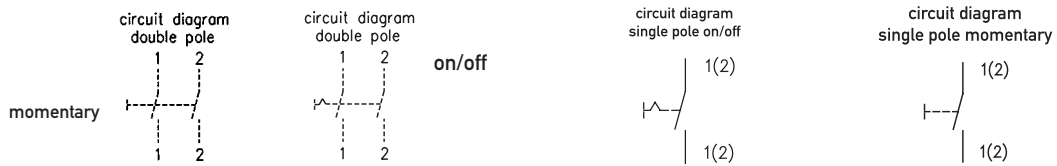
Preferred Range

Ordering Reference	Terminals	Mounting	Button length	Function	Pole
3293-410.01 1541	tab 4,8 mm, bottom side	Frameless	8 mm	On-off	Single
3293-400.01 2541	tab 4,8 mm, bottom side	Frameless	8 mm	On-off	Double

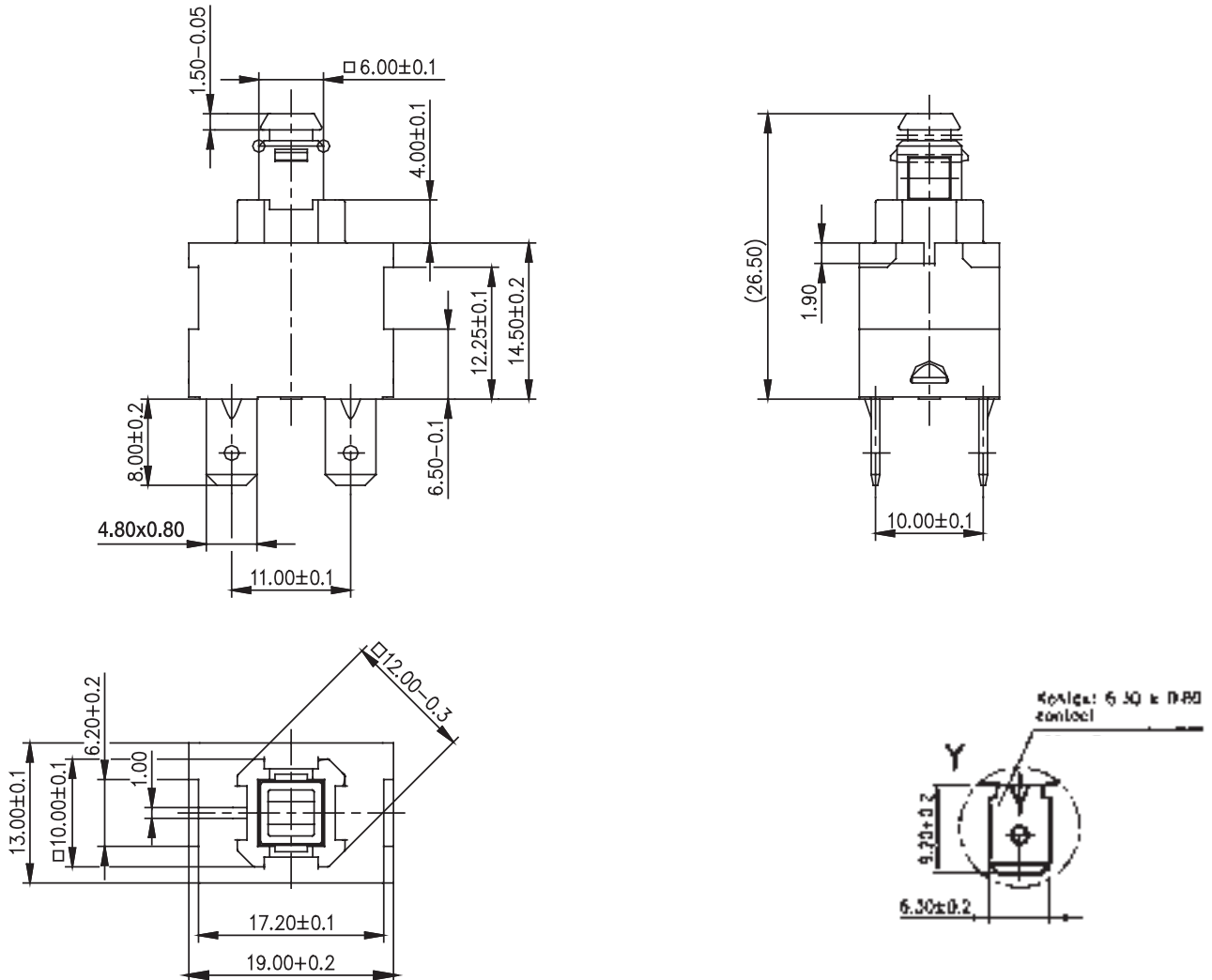
Specifications

Base	PA
Button	PA
Mechanism	Single/ double pole
Functions	ON/OFF Momentary NO
Contacts	Ag/Ni
Protection	IP 00
Mounting	Customised
Tracking Resistance	PTI 250
Glow-wire	850°C
Contact gap	< 3 mm

Circuit diagram



Dimensions

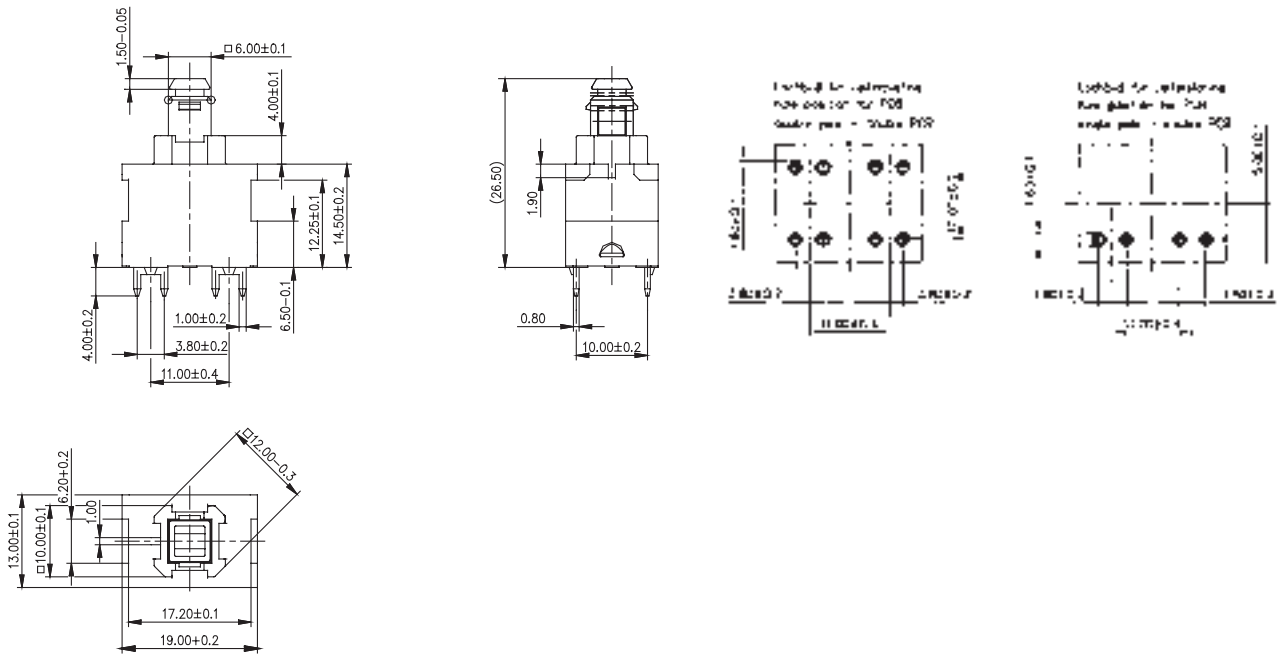


ERMEC, S.L. BARCELONA
C/ Francesc Teixido, 22
08918 Badalona SPAIN

Tel. +34 902 450 160
info@ermec.com
www.ermec.com

ERMEC, S.L. - MADRID
C/ Puerto Rico, 4
28222 Majadahonda (Madrid) SPAIN

bilbao@ermec.com
portugal@ermec.com



Standard range switches

Ordering Reference	Terminals	Mounting	Button length	Function	Pole
3293-412.01 1641	tab 6.3, bottom side	Frameless	8 mm	On-off	Single
3293-415.01 1841	PCB, bottom side	Frameless	8 mm	On-off	Single
3293-402.01 2641	tab 6.3, bottom side	Frameless	8 mm	On-off	Double
3293-404.01 2841	PCB, bottom side	Frameless	8 mm	On-off	Double