

# TP4

## TP4

Panel cut-out (mm)  $\varnothing 16.2$  or  $\varnothing 22.5$

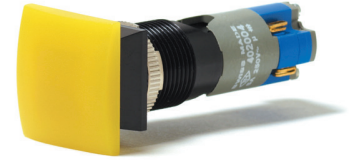
- Characteristics
- mushroom
  - momentary or latching
  - sealed IP40 or IP65
  - wide range of bezels
  - NO, NC
  - gold plated contact blocks

Rating 250 VAC, 5 A

Dimensions (mm) 18 X 24  
24 X 24  
 $\varnothing 24$   
 $\varnothing 30$

Actuator ■ mushroom cap in different shapes and colors

Approvals UL, CSA, VDE



Assembled Pushbutton

## Specifications

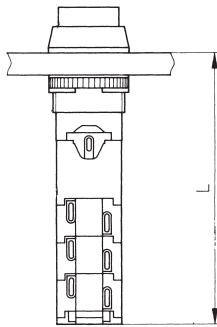
Mechanism	Momentary or latching
Actuating force	Approximately 2.5N – 1 contact block
Mounting	Central fixing with metal lock nut
Protection	IP40, IP65
Bezel material	Thermoplastic or anodized aluminum alloy
Lens material	Polycarbonate – engravable
Illumination	Non-illuminated
Temperature range °C	-20°C to +80°C
Mechanical life	10 <sup>6</sup> cycles
Contact block (blocks)	Supplied fitted
Contact block housing	Self-extinguishing duroplastic (UL 94 V0)
Terminal material	Silver alloy with 0.2 $\mu\text{m}$ silver plating, plus 0.4 $\mu\text{m}$ gold plating
Contact resistance	< 30mOhm
Number of contact blocks	1 NO + 1 NC per contact block, up to a maximum of 3 contact blocks per switch
Terminals	Patented flexible solder - suitable for wire diameter 2 X 1.00 mm <sup>2</sup> (braided), 4 X 0.75 mm (stranded)
Vibration resistance	1.5mm pp amplitude at 55 Hz

## Recommended maximum electrical ratings

Voltage (max) 250 VAC	Resistive load (A) 5.0 (0.7 pf)	Inductive load (A)	Approval UL, CSA, VDE - max. admissible circuit breaker C6A
12 VDC	5.0	3.0	General rating
24 VDC	4.0	2.0	General rating
36 VDC	3.0	1.7	General rating
48 VDC	2.0	1.5	General rating
60 VDC	1.5	1.2	General rating
125 VDC	0.5	0.3	General rating
250 VDC	0.3	0.2	General rating

Electrical life 70,000 cycles at 5A, 250 VAC, 0.7 pf

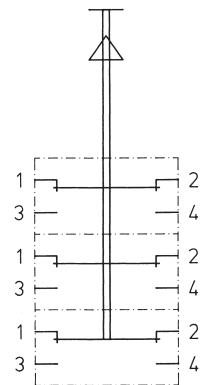
### Dimensions



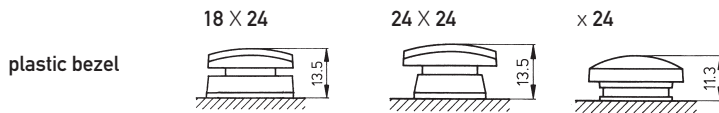
### Length in mm

Panel cut-out	16.2 ± 0.1	22.5 ± 0.1
N° of contact blocks 1	44.5	43.5
2	53.0	52.0
3	61.5	60.5

### Circuit diagrams (3 contact blocks)



### Bezel and lens heights in mm (switch off position)



panel cut-out 16.2 ± 0.1 mm



panel cut-out 22.5 mm

Front panel thickness 1.0 mm to 10 mm (Aluminum bezel 1.0 mm to 6.5 mm)