

TP5

TP5

Panel cut-out (mm)	Ø16.2 or Ø22.5
Characteristics	<ul style="list-style-type: none">■ momentary or latching■ sealed IP40 or IP65■ wide range of bezels■ shallow mounting depth■ with or without illumination■ NO, NC■ gold plated contact blocks
Rating	250 VAC, 5 A
Dimensions (mm)	18 × 24 18 × 18 Ø18 Ø25
Actuator	■ lenses in different shapes and colors
Approvals	UL, CSA, VDE



ERMEC, S.L. BARCELONA
C/ Francisc Teixidó, 22
08918 Badalona SPAIN

Tel. +34 902 450 160
info@ermec.com
www.ermec.com

ERMEC, S.L. - MADRID
C/ Puerto Rico, 4
28222 Majadahonda (Madrid) SPAIN

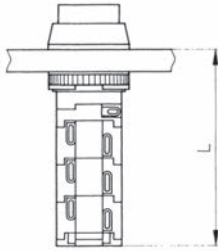
bilbao@ermec.com
portugal@ermec.com

TP5

Specifications

Mechanism	Bi-functional – momentary or latching
Actuating force	Approximately 2.5N – 1 contact block
Mounting	Central fixing with metal lock nut
Protection	IP40, IP65
Bezel material	Thermoplastic or anodized aluminum alloy
Lens material	Polycarbonate – engravable
Illumination	T13/4 midget grooved lamps – incandescent lamps . LEDs, multi LEDs 60 V, 1.2 W maximum Lamp contact "a" = cathode (-) Appropriate safety regulations should be respected when using the indicator light.
Temperature range °C	-20°C to +80°C
Mechanical life	10 ⁶ cycles
Contact block (blocks)	Supplied fitted
Contact block housing	Self-extinguishing duroplastic (UL 94 V0)
Terminal material	Silver alloy with 0.2 µm silver plating plus 0.4 µm gold plating
Contact resistance	< 30mOhm
Number of contact blocks	1 NO + 1 NC per contact block, up to a maximum of 3 contact blocks per switch
Terminals	Patented flexible solder - suitable for wire diameter 2 × 1.00 mm ² (braided), 4 × 0.75 mm (stranded)
Vibration resistance	1.5 mm pp amplitude at 55 Hz

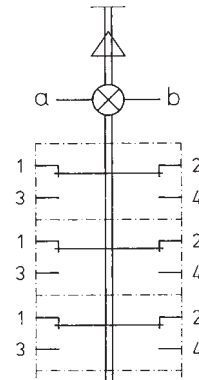
Dimensions



Length in mm (countersunk mounting version)

Panel cut-out		16.2 ±0.1	22.5 ±0.1
N° of contact blocks	1	27.5	26.5 (35.0)
	2	36.0	35.0 (43.5)
	3	44.5	43.5 (52.0)

Circuit diagram (3 contact blocks)



Recommended maximum electrical ratings

Voltage (max)	Resistive load (A)	Inductive load (A)	Approval
250 VAC	5.0 (0.7 pf)		UL, CSA, VDE - max. admissible circuit breaker C6A
12 VDC	5.0	3.0	General rating
24 VDC	4.0	2.0	General rating
36 VDC	3.0	1.7	General rating
48 VDC	2.0	1.5	General rating
60 VDC	1.5	1.2	General rating
125 VDC	0.5	0.3	General rating
250 VDC	0.3	0.2	General rating

Electrical life 70,000 cycles at 5A, 250 VAC, 0.7 pf



ERMEC, S.L. BARCELONA
C/ Francisc Teixidó, 22
08918 Badalona SPAIN

Tel. +34 902 450 160
info@ermec.com
www.ermec.com

ERMEC, S.L. - MADRID
C/ Puerto Rico, 4
28222 Majadahonda (Madrid) SPAIN

bilbao@ermec.com
portugal@ermec.com