

PARVALUX

a maxon company



Door Automation

2021 catalogue



ERMEC, S.L. BARCELONA
C/ Francesc Teixidó, 22
08918 Badalona SPAIN

Tel. +34 902 450 160
info@ermec.com
www.ermec.com

ERMEC, S.L. - MADRID
C/ Puerto Rico, 4
28222 Majadahonda (Madrid) SPAIN

bilbao@ermec.com
portugal@ermec.com



Door Automation

Parvalux provides an exciting range of motors for manufacturers of automatic door and gate opening systems. Our motors prove themselves daily in hundreds of premises, worldwide and offer the reliability, dependability and low running costs our customers have come to expect from a Parvalux British-designed and engineered unit. Whether your requirement is for automatic sliding doors, gate opening systems or electric garage doors, we can quickly customise our range to suit your specification or even develop a motor that's specific to your application.

Light duty

page 06 - 08

Standard duty

page 09 - 10

Heavy duty

page 11 - 12



ERMEC, S.L. BARCELONA
C/ Francesc Teixido, 22
08918 Badalona SPAIN

Tel. +34 902 450 160
info@ermec.com
www.ermec.com

ERMEC, S.L. - MADRID
C/ Puerto Rico, 4
28222 Majadahonda (Madrid) SPAIN

bilbao@ermec.com
portugal@ermec.com

Parvalux Electric Motors Ltd.

Door Automation 2021 Catalogue

Introduction 02

Parvalux

About Us

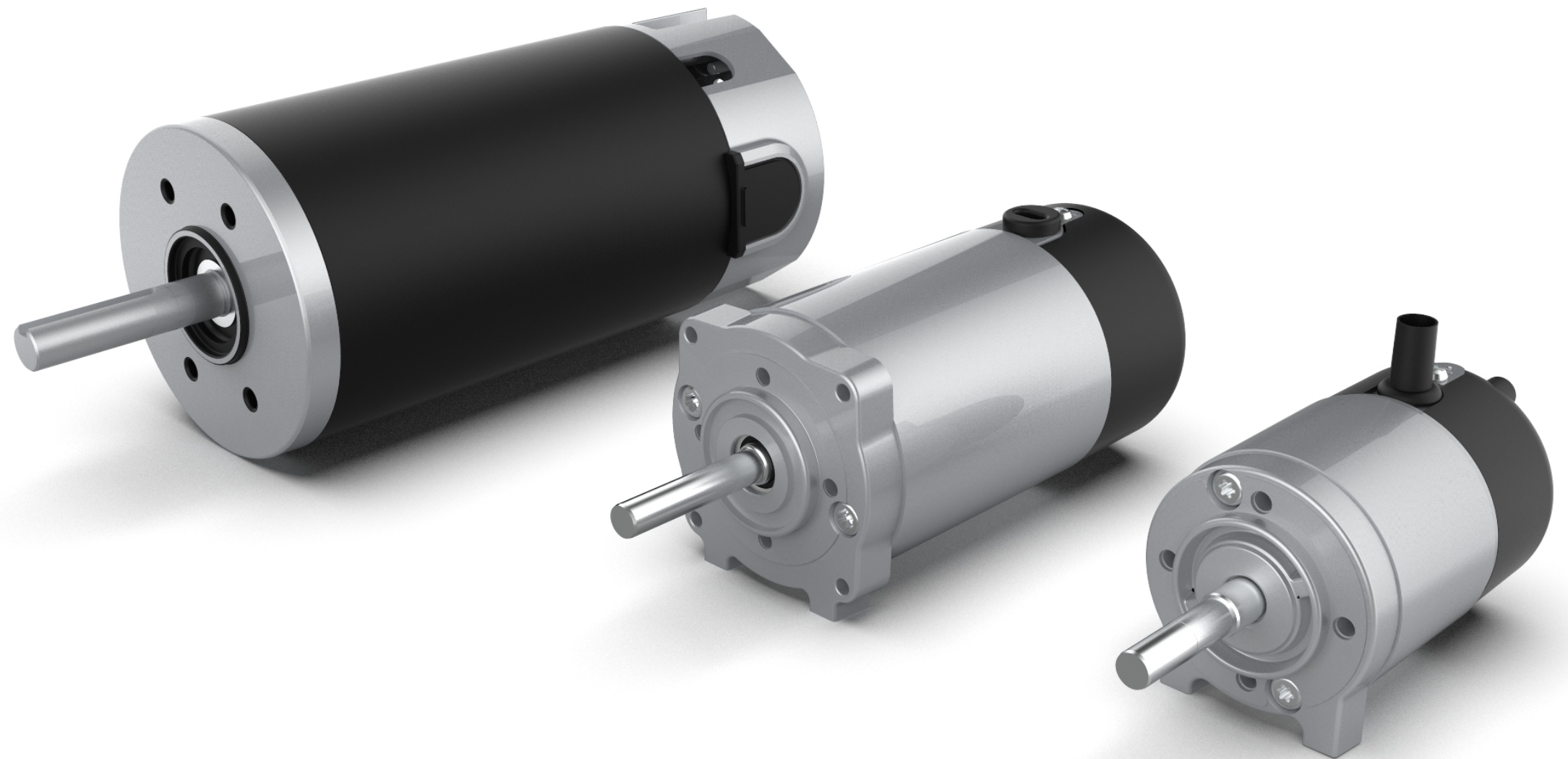
A true British manufacturing success story, Parvalux is the UK's largest fractional horsepower electric motor manufacturer and supplier with state-of-the-art manufacturing and service facilities.

We have over 70 years' experience creating the perfect combination of motor and gearbox to match our customers' applications and we offer thousands of standard AC, DC brushed and DC brushless electric motor options. We can easily customise any motor or gearbox to meet your exact requirements and we can do this at no or minimal extra cost. Our design team can help you choose, customise or design from scratch, geared motor solutions, ensuring you gain a competitive advantage in your market.

Our products are found in hundreds of applications, globally but we are particularly strong in industrial automation, e-mobility, transportation, logistics and a wide range of medical equipment. Parvalux is proudly a maxon company, meaning that we have representation on every continent and the backing of one of the finest technical teams on the planet.

As well as a huge range of standard products we also offer semi-custom and fully-custom design options to ensure you have a geared motor solution that exactly meets the needs of your application.

To find out more about the Parvalux product range, please visit www.parvalux.com.

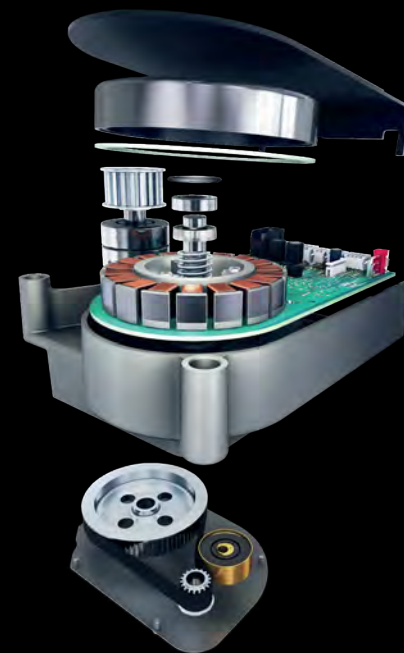


maxon

Precision Drive Systems

In 2018 Parvalux was acquired by Swiss motor manufacturer, maxon. Their brushless and brushed DC motors with ironless windings are among the best in the world; with flat motors with iron cores completing their modular product portfolio.

maxon's modular system includes planetary and spur gearheads, spindle drives, as well as encoders and control electronics.



Door Automation Applications



Building access

Whether it's sliding, spinning or just the standard hinge opening that you require, Parvalux has electric motor solutions to operate doors of all shapes and sizes.



Rail access

Parvalux products are found in various applications throughout the rail industry; from the automated doors on the train itself, to platform equipment and ticket barriers throughout the station, our motors make sure your trip from A to B runs as smoothly as possible



Elevator/lift access

Parvalux appreciates that safety is a key factor in the automation of elevator doors, and it's the reliability of our motors that ensures that we get it right on so many levels.

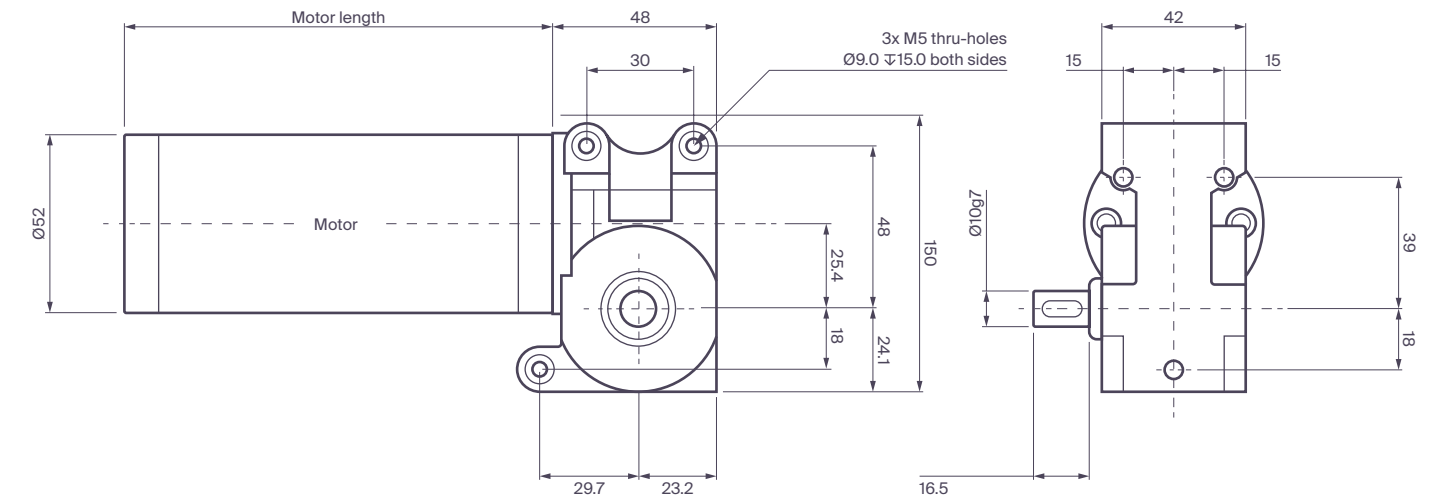


Home access

We know security is of paramount importance in your home, and our ability to provide the reliable operation in a range of environmental conditions means Parvalux geared motors are perfectly suited for automatic gates and garage doors wherever you may live.

BR52-GB58

Light-duty door automation systems



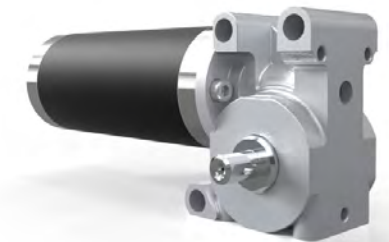
Technical data			
1 Motor		BR52-95	BR52-125
2 Voltage	V	12 - 48	12 - 48
3 Maximum power	W	43	65
4 Nominal speed	rpm	330	330
5 Nominal torque	Nm	1.0	1.5
6 Peak torque	Nm	3.0	4.0
7 Gearbox axial load	N	300	300
8 Gearbox radial load	N	400	400
9 Gearbox efficiency	%	80	80
10 Gearbox ratio	:1	10	10
11 Motor length	mm	95	125

Accessories

The diagram illustrates the assembly of a motor system. At the top, a motor is shown with a red arrow pointing to its shaft. Below the motor, a series of components are shown in a sequence, separated by plus signs: a small red component, a larger red component, a black component, and a gear. Lines connect these components to a table below, which lists their names and lengths in millimeters.

Component	Length (+L mm)
Brake	38.0
Power on	32.0
Power off	32.0
Gearbox	38.0
Shaft attachments; pulleys, cogs, etc.	38.0
Encoder	38.0
Low resolution	4 - 48 ppr
High resolution incremental	4 - 4096 ppr
High resolution absolute	4 - 4096 ppr

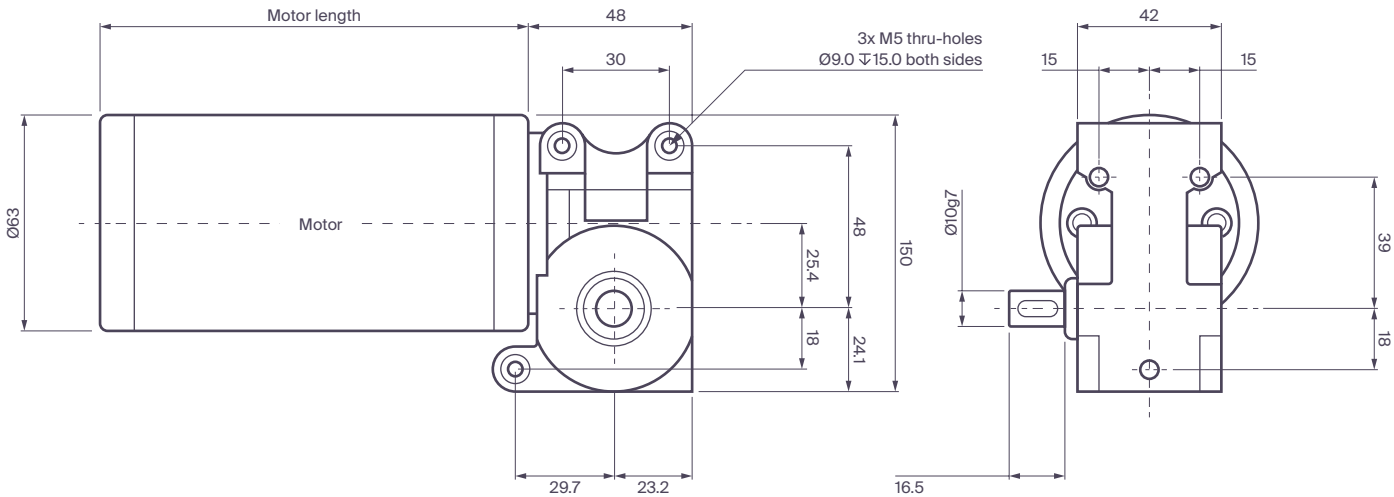
+L mm = added length



BR63-GB58

Brushed right-angle geared motor

Light-duty door automation systems



Technical data			
1 Motor		BR63-110	BR63-125
2 Voltage	V	12 - 48	12 - 48
3 Maximum power	W	65	108
4 Nominal speed	rpm	330	330
5 Nominal torque	Nm	1.5	2.5
6 Peak torque	Nm	4.0	8.0
7 Gearbox axial load	N	300	300
8 Gearbox radial load	N	400	400
9 Gearbox efficiency	%	80	80
10 Gearbox ratio	:1	10	10
11 Motor length	mm	110	125

Brake

Power on

Power off

+L mm

38.0

32.0

Gearbox

Shaft attachments;

pulleys, cogs, etc.

Encoder

Low resolution

High resolution incremental

High resolution absolute

4 - 48 ppr

4 - 4096 ppr

4 - 4096 ppr

+L mm

12.0

9.0

12.0

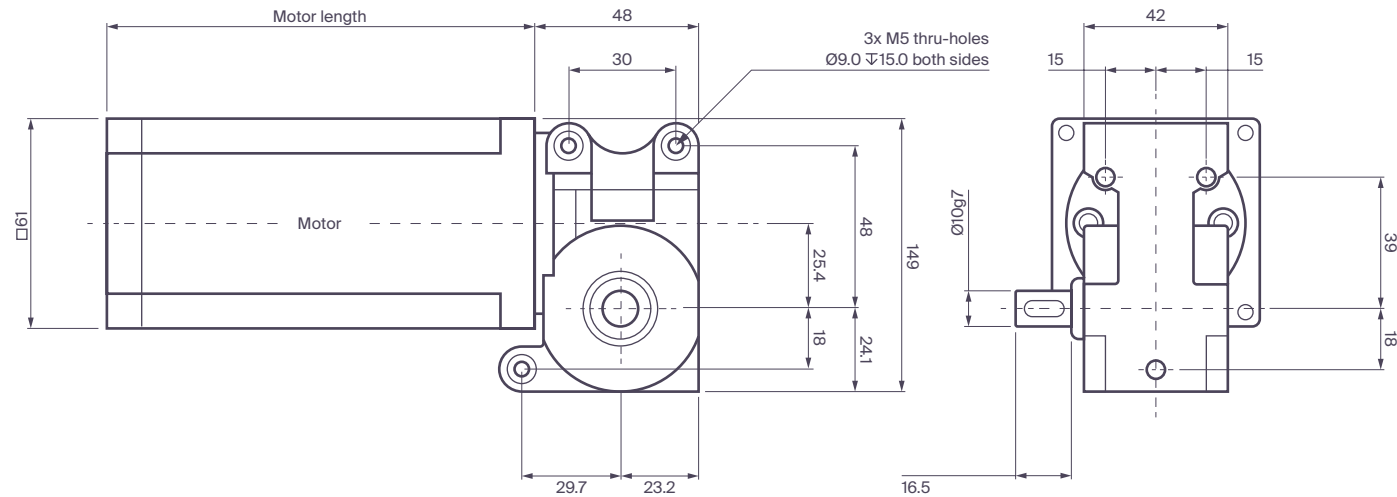
+L mm = added length



EC60-GB58

Brushless right-angle geared motor

Light-duty door automation systems



Technical data			
1 Motor		EC60-70	EC60-90
2 Voltage	V	24 - 48	24 - 48
3 Maximum power	W	52	121
4 Nominal speed	rpm	330	330
5 Nominal torque	Nm	1.2	2.8
6 Peak torque	Nm	3.5	8.0
7 Gearbox axial load	N	300	300
8 Gearbox radial load	N	400	400
9 Gearbox efficiency	%	80	80
10 Gearbox ratio	:1	10	10
11 Motor length	mm	70	90

Brake

Power on

Power off

+L mm

38.0

32.0

Gearbox

Shaft attachments;

pulleys, cogs, etc.

Encoder

Low resolution

High resolution incremental

High resolution absolute

4 - 48 ppr

4 - 4096 ppr

4 - 4096 ppr

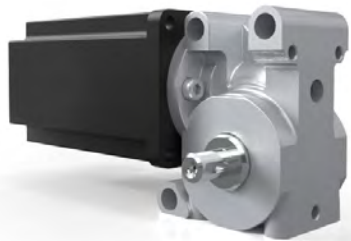
+L mm

12.0

9.0

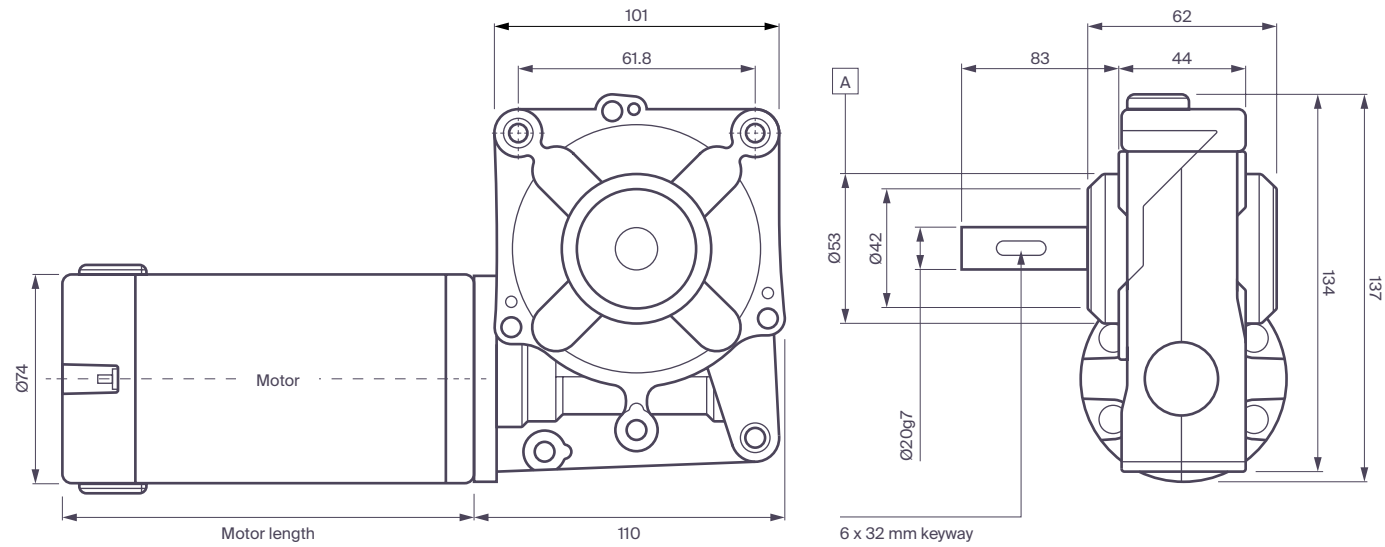
12.0

+L mm = added length



PM70-GB12 Brushed right-angle geared motor

Standard-duty door automation systems



Technical data		
1 Motor		PM70-146
2 Voltage	V	12 - 48
3 Maximum power	W	220
4 Nominal speed	rpm	330
5 Nominal torque	Nm	5.0
6 Peak torque	Nm	22.0
7 Gearbox axial load	N	300
8 Gearbox radial load	N	500
9 Gearbox efficiency	%	90
10 Gearbox ratio	:1	12.5
11 Motor length	mm	146

Brake

Power on

Power off

+L mm

38.0

32.0

Gearbox

Shaft attachments;

pulleys, cogs, etc.

Encoder

Low resolution

High resolution incremental

High resolution absolute

4 - 48 ppr

4 - 4096 ppr

4 - 4096 ppr

+L mm

12.0

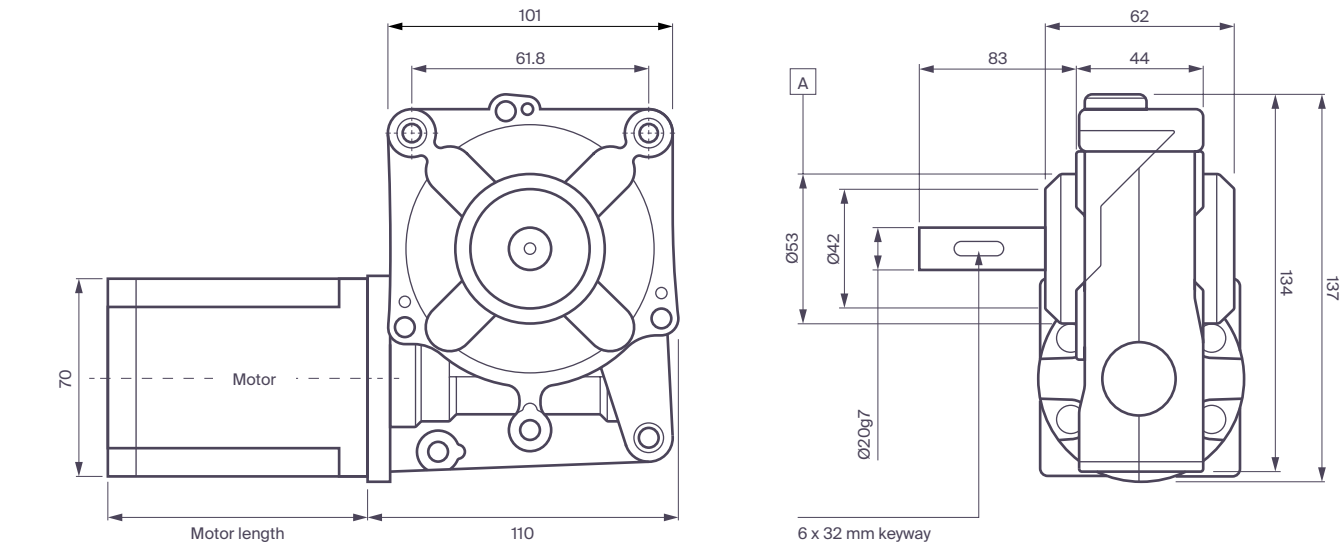
9.0

12.0

+L mm = added length

EC70-GB12 Brushless right-angle geared motor

Standard-duty door automation systems



Technical data		
1 Motor		EC70-92
2 Voltage	V	12 - 48
3 Maximum power	W	220
4 Nominal speed	rpm	330
5 Nominal torque	Nm	5.0
6 Peak torque	Nm	22.0
7 Gearbox axial load	N	300
8 Gearbox radial load	N	500
9 Gearbox efficiency	%	90
10 Gearbox ratio	:1	12.5
11 Motor length	mm	92

Brake

Power on

Power off

+L mm

38.0

32.0

Gearbox

Shaft attachments;

pulleys, cogs, etc.

Encoder

Low resolution

High resolution incremental

High resolution absolute

4 - 48 ppr

4 - 4096 ppr

4 - 4096 ppr

+L mm

12.0

9.0

12.0

+L mm = added length



PARVALUX



ERMEC, S.L. BARCELONA
C/ Francèsc Teixidó, 22
08918 Badalona SPAIN

Tel. +34 902 450 160
info@ermec.com
www.ermec.com

ERMEC, S.L. - MADRID
C/ Puerto Rico, 4
28222 Majadahonda (Madrid) SPAIN

bilbao@ermec.com
portugal@ermec.com

092020