

NEW

Conectores para Luminarias



Push - Press - Play:
La conexión fácil y rápida con la
Serie LK 980

ADELS
contact

ERMEC, SL BARCELONA
Francesc Teixidó, 22
08918 Badalona
España
bcn@ermec.com
Tel.: (+34)93.450.16.00

ERMEC MADRID
c/Puerto Rico, 4
28222 Majadahonda
España
madrid@ermec.com
Tel.: (+34)91.828.56.51

ERMEC PORTUGAL
Rua Brito Capelo, 807
4450-068 Matosinhos
Portugal
portugal@ermec.com
Tel.: (+35)1707509539

ERMEC BILBAO
bilbao@ermec.com
Tel.: (+34)91.828.56.51

www.ermec.com



LK 980-01 RZ/ 2

Order No. 21833

terminal block, 2 pole, insulating material: PA 6.6, fixing: catch pin, voltage rating: 450 V, current rating: 24.0 A, cross-section rating: 2.5 mm²



LK 980-01 RZ/ 2 BD N L

Order No. 21840

terminal block, 2 pole, insulating material: PA 6.6, fixing: catch pin, voltage rating: 450 V, current rating: 24.0 A, cross-section rating: 2.5 mm²



LK 980-01 RZ/ 2 GW V0

Order No. 21844

terminal block, 2 pole, insulating material: PA 6.6-GW V0, fixing: catch pin, voltage rating: 450 V, current rating: 24.0 A, cross-section rating: 2.5 mm²



LK 980-01/ 2

Order No. 21695

terminal block, 2 pole, insulating material: PA 6.6, fixing: screw, voltage rating: 450 V, current rating: 24.0 A, cross-section rating: 2.5 mm²

ERMEC,SL BARCELONA

Francesc Teixidó,22
08918 Badalona
España
bcn@ermec.com
Tel.: (+34)93.450.16.00

ERMEC MADRID

c/Puerto Rico, 4
28222 Majadahonda
España
madrid@ermec.com
Tel.: (+34)91.828.56.51

ERMEC PORTUGAL

Rua Brito Capelo, 807
4450-068 Matosinhos
Portugal
portugal@ermec.com
Tel.: (+35)1707509539

ERMEC BILBAO

bilbao@ermec.com
Tel.: (+34)91.828.56.51

www.ermec.com



LK 980-01/ 2 GW V0

Order No. 21720
terminal block, 2 pole, insulating material: PA 6.6-GW V0, fixing:
screw, voltage rating: 450 V, current rating: 24.0 A, cross-section rating:
2.5 mm²



LK 980-01 RZ/ 3 SK

Order No. 21875
terminal block, 3 pole, insulating material: PA 6.6, fixing: catch pin, PE
terminal: SK, voltage rating: 450 V, current rating: 24.0 A, cross-section rating:
2.5 mm²



LK 980-01 RZ/ 3 SK BD N PE L

Order No. 21881
terminal block, 3 pole, insulating material: PA 6.6, fixing: catch pin, PE
terminal: SK, voltage rating: 450 V, current rating: 24.0 A, cross-section rating:
2.5 mm²



LK 980-01 RZ/ 3 STW

Order No. 25440
terminal block, 3 pole, insulating material: PA 6.6, fixing: catch pin, PE
terminal: STW, voltage rating: 450 V, current rating: 24.0 A, cross-section
rating: 2.5 mm²



LK 980-01 RZ/ 3 STW BD N PE L

Order No. 21886
terminal block, 3 pole, insulating material: PA 6.6, fixing: catch pin, PE
terminal: STW, voltage rating: 450 V, current rating: 24.0 A, cross-section
rating: 2.5 mm²



LK 980-01 RZ/ 3 SU BD N PE L

Order No. 21889

terminal block, 3 pole, insulating material: PA 6.6, fixing: catch pin, PE terminal: SU, voltage rating: 450 V, current rating: 24.0 A, cross-section rating: 2.5 mm²



LK 980-01 RZ/ 3

Order No. 21850

terminal block, 3 pole, insulating material: PA 6.6, fixing: catch pin, voltage rating: 450 V, current rating: 24.0 A, cross-section rating: 2.5 mm²



LK 980-01 RZ/ 3 BD N PE L

Order No. 21868

terminal block, 3 pole, insulating material: PA 6.6, fixing: catch pin, voltage rating: 450 V, current rating: 24.0 A, cross-section rating: 2.5 mm²



LK 980-01 RZ/ 3 GW V0

Order No. 21870

terminal block, 3 pole, insulating material: PA 6.6-GW V0, fixing: catch pin, voltage rating: 450 V, current rating: 24.0 A, cross-section rating: 2.5 mm²



LK 980-01/ 3 SK

Order No. 21753

terminal block, 3 pole, insulating material: PA 6.6, fixing: screw, PE terminal: SK, voltage rating: 450 V, current rating: 24.0 A, cross-section rating: 2.5 mm²



LK 980-01/ 3 SK BD N PE L

Order No. 21756
terminal block, 3 pole, insulating material: PA 6.6, fixing: screw, PE
terminal: SK, voltage rating: 450 V, current rating: 24.0 A, cross-section
rating: 2.5 mm²



LK 980-01/ 3 STW BD N PE L

Order No. 25415
terminal block, 3 pole, insulating material: PA 6.6, fixing: screw, PE
terminal: STW, voltage rating: 450 V, current rating: 24.0 A, cross-
section rating: 2.5 mm²



LK 980-01/ 3 STW

Order No. 25414
terminal block, 3 pole, insulating material: PA 6.6, fixing: screw, PE
terminal: STW, voltage rating: 450 V, current rating: 24.0 A, cross-section
rating: 2.5 mm²



LK 980-01/ 3

Order No. 21721
terminal block, 3 pole, insulating material: PA 6.6, fixing: screw, voltage
rating: 450 V, current rating: 24.0 A, cross-section rating: 2.5 mm²



LK 980-01/ 3 BD N PE L

Order No. 21740
terminal block, 3 pole, insulating material: PA 6.6, fixing: screw, voltage
rating: 450 V, current rating: 24.0 A, cross-section rating: 2.5 mm²



LK 980-01/ 3 GW V0

Order No. 21746

terminal block, 3 pole, insulating material: PA 6.6-GW V0, fixing: screw, voltage rating: 450 V, current rating: 24.0 A, cross-section rating: 2.5 mm²



LK 980-01 RZ/ 4 SK

Order No. 21903

terminal block, 4 pole, insulating material: PA 6.6, fixing: catch pin, PE terminal SK, voltage rating: 450 V, current rating: 24.0 A, cross-section rating: 2.5 mm²



LK 980-01 RZ/ 4 SK BD N PE 1 2

Order No. 21906

terminal block, 4 pole, insulating material: PA 6.6, fixing: catch pin, PE terminal SK, voltage rating: 450 V, current rating: 24.0 A, cross-section rating: 2.5 mm²



LK 980-01 RZ/ 4 STW

Order No. 25451

terminal block, 4 pole, insulating material: PA 6.6, fixing: catch pin, PE terminal STW, voltage rating: 450 V, current rating: 24.0 A, cross-section rating: 2.5 mm²



LK 980-01 RZ/ 4 STW BD N PE 1 2

Order No. 25454

terminal block, 4 pole, insulating material: PA 6.6, fixing: catch pin, PE terminal STW, voltage rating: 450 V, current rating: 24.0 A, cross-section rating: 2.5 mm²



LK 980-01 RZ/ 4 SU BD N PE 1 2

Order No. 21910

terminal block, 4 pole, insulating material: PA 6.6, fixing: catch pin, PE terminal SU, voltage rating: 450 V, current rating: 24.0 A, cross-section rating: 2.5 mm²



LK 980-01 RZ/ 4

Order No. 21890

terminal block, 4 pole, insulating material: PA 6.6, fixing: catch pin, voltage rating: 450 V, current rating: 24.0 A, cross-section rating: 2.5 mm²



LK 980-01 RZ/ 4 BD N PE 1 2

Order No. 21897

terminal block, 4 pole, insulating material: PA 6.6, fixing: catch pin, voltage rating: 450 V, current rating: 24.0 A, cross-section rating: 2.5 mm²



LK 980-01 RZ/ 4 GW V0

Order No. 21901

terminal block, 4 pole, insulating material: PA 6.6-GW V0, fixing: catch pin, voltage rating: 450 V, current rating: 24.0 A, cross-section rating: 2.5 mm²



LK 980-01/ 4 SK

Order No. 21788

terminal block, 4 pole, insulating material: PA 6.6, fixing: screw, PE terminal SK, voltage rating: 450 V, current rating: 24.0 A, cross-section rating: 2.5 mm²



LK 980-01/ 4 SK BD N PE 1 2

Order No. 21789

terminal block, 4 pole, insulating material: PA 6.6, fixing: screw, PE terminal SK, voltage rating: 450 V, current rating: 24.0 A, cross-section rating: 2.5 mm²



LK 980-01/ 4 STW BD N PE 1 2

Order No. 25425

terminal block, 4 pole, insulating material: PA 6.6, fixing: screw, PE terminal STW, voltage rating: 450 V, current rating: 24.0 A, cross-section rating: 2.5 mm²



LK 980-01/ 4 STW

Order No. 25424

terminal block, 4 pole, insulating material: PA 6.6, fixing: screw, PE terminal: STW, voltage rating: 450 V, current rating: 24.0 A, cross-section rating: 2.5 mm²



LK 980-01/ 4

Order No. 21761

terminal block, 4 pole, insulating material: PA 6.6, fixing: screw, voltage rating: 450 V, current rating: 24.0 A, cross-section rating: 2.5 mm²



LK 980-01/ 4 BD N PE 1 2

Order No. 21771

terminal block, 4 pole, insulating material: PA 6.6, fixing: screw, voltage rating: 450 V, current rating: 24.0 A, cross-section rating: 2.5 mm²



LK 980-01/ 4 GW V0

Order No. 21782

terminal block, 4 pole, insulating material: PA 6.6-GW V0, fixing: screw, voltage rating: 450 V, current rating: 24.0 A, cross-section rating: 2.5 mm²



LK 980-01 RZ/ 5 SK

Order No. 21922

terminal block, 5 pole, insulating material: PA 6.6, fixing: catch pin, PE terminal: SK, voltage rating: 450 V, current rating: 24.0 A, cross-section rating: 2.5 mm²



LK 980-01 RZ/ 5 SK BD 3 N PE 1 2

Order No. 21923

terminal block, 5 pole, insulating material: PA 6.6, fixing: catch pin, PE terminal: SK, voltage rating: 450 V, current rating: 24.0 A, cross-section rating: 2.5 mm²



LK 980-01 RZ/ 5 STW BD 3 N PE 1 2

Order No. 25467

terminal block, 5 pole, insulating material: PA 6.6, fixing: catch pin, PE terminal: STW, voltage rating: 450 V, current rating: 24.0 A, cross-section rating: 2.5 mm²



LK 980-01 RZ/ 5 STW

Order No. 25465

terminal block, 5 pole, insulating material: PA 6.6, fixing: catch pin, PE terminal: STW, voltage rating: 450 V, current rating: 24.0 A, cross-section rating: 2.5 mm²



LK 980-01 RZ/ 5 SU BD 3 N PE 1 2

Order No. 21933

terminal block, 5 pole, insulating material: PA 6.6, fixing: catch pin, PE terminal: SU, voltage rating: 450 V, current rating: 24.0 A, cross-section rating: 2.5 mm²

LK 980-01 RZ/ 5 SU BD L N PE 1 2

Order No. 21932

terminal block, 5 pole, insulating material: PA 6.6, fixing: catch pin, PE terminal: SU, voltage rating: 450 V, current rating: 24.0 A, cross-section rating: 2.5 mm²



LK 980-01 RZ/ 5

Order No. 21911

terminal block, 5 pole, insulating material: PA 6.6, fixing: catch pin, voltage rating: 450 V, current rating: 24.0 A, cross-section rating: 2.5 mm²



LK 980-01 RZ/ 5 BD 3 N PE 1 2

Order No. 21914

terminal block, 5 pole, insulating material: PA 6.6, fixing: catch pin, voltage rating: 450 V, current rating: 24.0 A, cross-section rating: 2.5 mm²



LK 980-01 RZ/ 5 GW V0

Order No. 25457

terminal block, 5 pole, insulating material: PA 6.6-GW V0, fixing: catch pin, voltage rating: 450 V, current rating: 24.0 A, cross-section rating: 2.5 mm²



LK 980-01/ 5 SK

Order No. 21821

terminal block, 5 pole, insulating material: PA 6.6, fixing: screw, PE terminal: SK, voltage rating: 450 V, current rating: 24.0 A, cross-section rating: 2.5 mm²



LK 980-01/ 5 SK BD 3 N PE 1 2

Order No. 21825

terminal block, 5 pole, insulating material: PA 6.6, fixing: screw, PE terminal: SK, voltage rating: 450 V, current rating: 24.0 A, cross-section rating: 2.5 mm²



LK 980-01/ 5 STW BD 3 N PE 1 2

Order No. 25432

terminal block, 5 pole, insulating material: PA 6.6, fixing: screw, PE terminal: STW, voltage rating: 450 V, current rating: 24.0 A, cross-section rating: 2.5 mm²



LK 980-01/ 5 STW

Order No. 25431

terminal block, 5 pole, insulating material: PA 6.6, fixing: screw, PE terminal: STW, voltage rating: 450 V, current rating: 24.0 A, cross-section rating: 2.5 mm²



LK 980-01/ 5

Order No. 21794
terminal block, 5 pole, insulating material: PA 6.6, fixing: screw, voltage rating: 450 V, current rating: 24.0 A, cross-section rating: 2.5 mm²



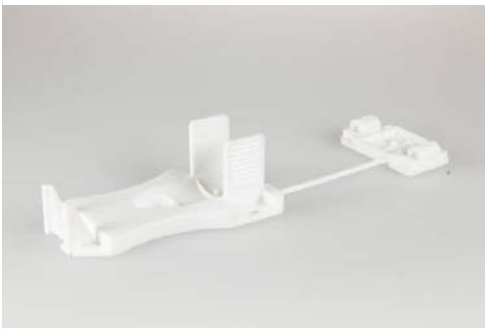
LK 980-01/ 5 BD 3 N PE 1 2

Order No. 21806
terminal block, 5 pole, insulating material: PA 6.6, fixing: screw, voltage rating: 450 V, current rating: 24.0 A, cross-section rating: 2.5 mm²



WKZ 980-01

Order No. 999041
release tool



ZEL 900

Order No. 196423
strain relief, insulating material: PC, fixing: screw



ZEL 110

Order No. 196420
strain relief, insulating material: PC, fixing: screw