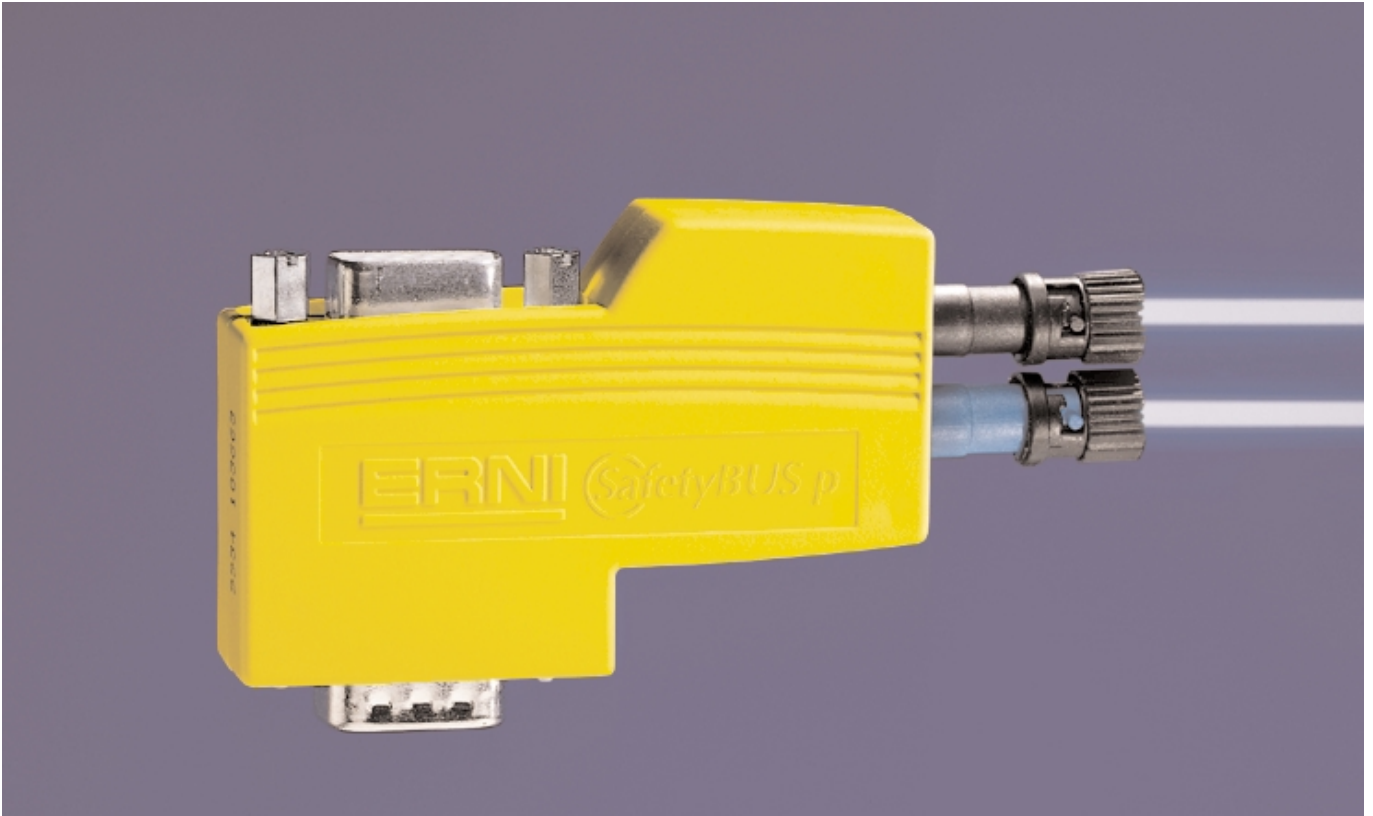


# ERbic

## SafetyBUS p Fiber-Optic Transceiver

Long-distance data transmission without interferences



### General

The SafetyBUS p FO transceiver converts electrical signals of a SafetyBUS p interface into optical signals.

The data transmission is bi-directional and in full-duplex mode.

SafetyBUS p systems with data rates up to 500 kBit/s are supported.

The SafetyBUS p FO transceiver can be used at SafetyBUS p devices which are suitable for this application and which support the power supply at the interface.

The SafetyBUS p FO transceiver is used with a 50/125 $\mu$  or 62.5/125 $\mu$  GI glass fiber at a wavelength of 850 nm and optical ST connectors. The optical interface is not inevitably compatible to other FO systems so the FO transceivers always should be used as a pair.

### Ordering Number: 134337

Fiber-optic cable assemblies according to your application upon request

**ERMEC.COM**

ALCALDE MOSTOLES, 42- 44  
E-08025 BARCELONA SPAIN  
TEL.: (00-34).93.450.16.00  
FAX: (00-34).93.433.08.85  
[www.ermec.com](http://www.ermec.com) [ermec@ermec.com](mailto:ermec@ermec.com)

### Technical Data

Wavelength	850 nm
Fiber	50/125 $\mu$ -GI or 62,5/125 $\mu$ -GI
Optical Connector	ST (B-FOC)
Max. Transmission Distance	4000 m (50/125 $\mu$ ) 3400 m (62,5/125 $\mu$ )
Data Rate	10 kBit/s – 500 kBit/s
Power Supply	5 V DC ( $\pm$ 5%), over Sub-D Connector
Current Consumption	70 mA max.
Pin Assignment	2 CAN-L, 7 CAN-H, 5 Shield, 3 OV/CAN-Gnd, 8 Vcc
PullUp, PullDown	390 $\Omega$ each
Termination	no
Output Capacity	200 pF max. CAN-H-CAN-L or CAN-H-Gnd, CAN-L-Gnd
Dimensions	84 x 47 x 16 mm
Operating Temperature	0 bis +65 °C
Storage Temperature	-25 bis +85 °C
Humidity	10 - 90 % (no condensing)
EMC	CE according EMC-Guideline 89/336/EWG