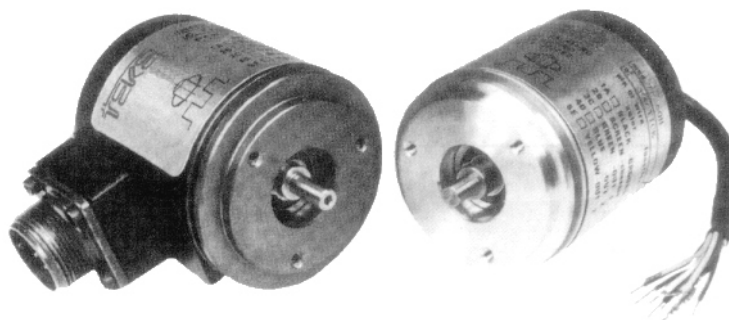


TK60 series



Tel.: (+34) 902 450 160
Fax: (+34) 902 433 088
ermec@ermec.com
www.ermec.com



Main features



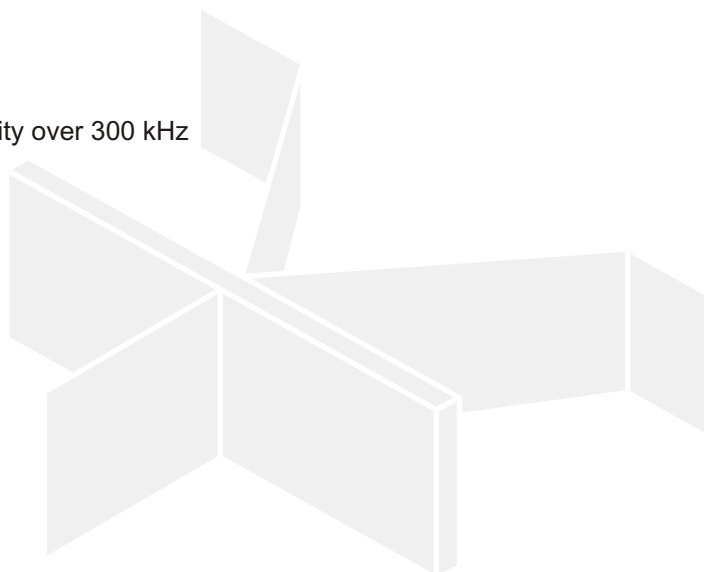
Housing sealed against oil, moisture and dust



Standard pulse rate up to 9000 pulses per revolution (without count multiplication logic)



Output capacity over 300 kHz



TEKEL Instruments S.r.l. - Via Torino 13/1 - 10060 Roletto (TO) Italia
Tel +39 0121.343811 (10 linee r.a.) - Fax +39 0121.343888
<http://www.tekel.it> - e-mail: tekel@tekel.it

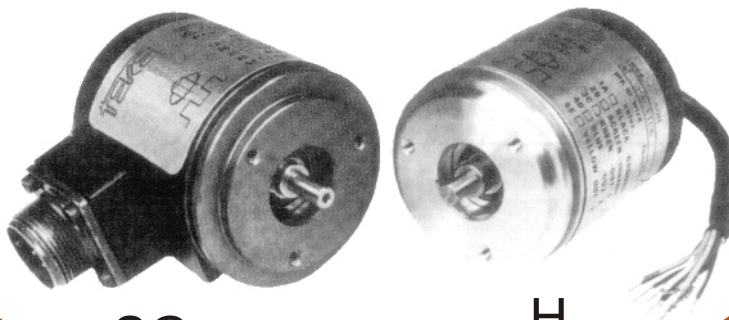


TK60 series

ERMEC

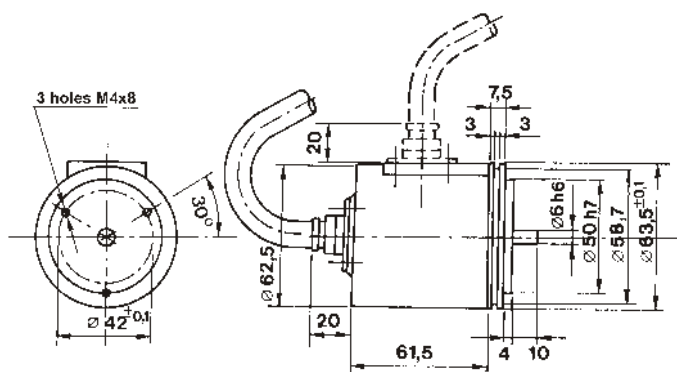
www.ermec.com

Distribución de componentes
eléctricos y electrónicos



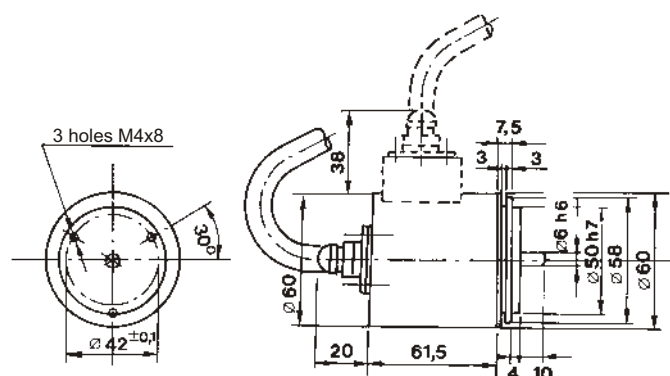
SG

H



SG = Servo-brackets

Mainframe Ø 63 mm



H = Servo

Mainframe Ø 58/60 mm

ERMEC

ERMEC, S.L. BARCELONA
C/ Francesc Teixidó, 22
E-08918 Badalona
(Spain)

Tel.: (+34) 902 450 160
Fax: (+34) 902 433 088
info@ermec.com
www.ermec.com

ERMEC, S.L. MADRID
C/ Sagasta, 8, 1ª planta
E-28004 Madrid
(Spain)

PORTUGAL
portugal@ermec.com
BILBAO
bilbao@ermec.com

TECHNICAL CHARACTERISTICS

Models	TK610 unidirectional TK611 unidirectional + zero index TK660 bi-directional TK661 bi-directional + zero index
Standard no. of increments per revolution	2 - 5 - 10 - 20 - 25 - 30 - 32 - 36 - 40 - 50 - 60 - 64 - 72 - 80 - 88 - 90 - 100 - 120 - 125 - 127 - 128 - 150 - 180 - 200 - 240 - 250 - 254 - 256 - 300 - 314 - 360 - 375 - 400 - 500 - 512 - 576 - 600 - 625 - 635 - 720 - 750 - 800 - 900 - 1000 - 1024 - 1200 - 1250 - 1270 - 1440 - 1500 - 1800 - 2000 - 2048 - 2500 - 2540 - 2700 - 3600 - 4096 - 5000 - 9000

MECHANICAL CHARACTERISTICS

Assembly	SG Servo-brackets H Servo (58/60 mm)
Dimension	See drawing
Mass	0,45 kg
Slewing speed	12.000 rpm for short period; 6.000 rpm for normal operation; 2000 rpm for normal operation with shaft seal
Shaft diameter	6 mm 10 mm
Hollow shaft	Not available
Shaft seal	Available
Starting torque at 25°C	0,025 Nm without shaft seal; 0,040 Nm with shaft seal
Starting inertia	40 g cm ²
Acceleration	150.000 rad/s ² (glass disc); 200.000 rad/s ² (flexible disc - "DP")
Ball bearing working life	10 ⁹ revolutions min
Low torque	Not available
Shaft loading	Axial 200 N; radial 200 N

MATERIALS

Mainframe	"Al" thermally stabilised and anodised
Housing	Cast "Al" painted with oven treating at 180°C
Shaft	Stainless steel
Light source	GaAsAl infrared light emitting diode MTFB 10 ⁵ hrs min.
Receivers	Two opto-receivers in push-pull for each channel

ENVIRONMENTAL CHARACTERISTICS

Operating temperature	-10 ° + +70 °C
Storage temperature	-30 ° + +80 °C
Humidity	Up to 98% R.H. without condensation
Protection	K4 IP 64 for DIN 40050; K5 IP 65 for DIN 40050; K6 IP 66 for DIN 40050
Vibrations	10 g (from 10 to 2000 Hz)
Shock	20 g for 11 ms

ELECTRICAL CHARACTERISTICS

Zero index	Gated on channel A, B, A+B (depending on the model)
Voltage supply	5 V ± 5 %, 12 V ± 5 %, 15 V ± 5 %, 24 V ± 5 %
Protection	Against polarity reverse
Power consumption	150 mA max
Frequency range (T=-10°C ÷ + 70°C)	S 0 ÷ 100 kHz V 0 ÷ 300 kHz
Output	LD line driver RS422 - 5 V (Motorola 26LS31) with supply of 5 or 24/5 V LD line driver RS422 - 12 V (Motorola MM88C30) with supply of 12 or 24/12 V LD line driver RS422 - 15 V (Motorola MM88C30) with supply of 15 V

CONNECTION CONFIGURATIONS

Output configurations S, P, OP, OC, PP, PP2	P on axial cable gland with cable 1-6 m long; PL radial cable gland with cable 1-6 m long;
Output configurations LD	S on 10 pins axial MIL connector; L on 10 pins radial Mil connector;



ERMEC, S.L. BARCELONA
C/ Francisc Teixidó, 22
E-08918 Badalona
(Spain)

Tel.: (+34) 902 450 160
Fax: (+34) 902 433 088
info@ermec.com
www.ermec.com

ERMEC, S.L. MADRID
C/ Sagasta, 8, 1ª planta
E-28004 Madrid
(Spain)

PORTUGAL
portugal@ermec.com
BILBAO
bilbao@ermec.com

