

CJ series

Proportional, multi-function hand grip controllers •
non-contacting Hall effect technology



DISTINCTIVE FEATURES

- One and two axis control
- Analog outputs
- Rated for 5 million lifecycles
- CAN bus and USB output options
- Redundant output available



ENVIRONMENTAL SPECIFICATIONS

- Operating Temperature: -40 °C to +85 °C (-40 °F to +185 °F)
- Storage Temperature: -40 °C to +85 °C (-40 °F to +185 °F)
- Above Panel Sealing: Up to IP67 (subject to handle configuration)
- EMC Immunity Level: EN61000-4-3: 2006
- EMC Emissions Level: EN61000-4-8: 2009
- ESD: EN61000-4-2: 2008



ELECTRICAL SPECIFICATIONS

- Supply voltage range: 5.00 VDC \pm 0.01 VDC
- Reverse polarity Max: -10 VDC
- Ratiometric Output Voltage: See options
- Transient overvoltage max: 16 V
- Output Impedance: 2 Ω
- Return to Center Voltage Tolerance: \pm 200 mV initial
- Supply Current: 13 mA per sensor



MECHANICAL SPECIFICATIONS

- Operating Force: 7.6 N (1.70 lbf)
- Maximum Vertical Load: 444.8 N (100 lbf)
- Maximum Horizontal Load: 649.4 N (146 lbf)
- Mechanical Angle of Movement: 40° (\pm 20°)
- Expected Life: 10 million lifecycles
- Mass /weight: 544.3 g (19.2 oz)
- Lever Action (centering): Spring

* Operating force: configuration option «L»

The company reserves the right to change specifications without notice.



CJ series

Proportional, multi-function industrial hand grip controllers •
non-contacting Hall effect technology



MATERIALS

- Body: Glass Filled Nylon
- Handles: Glass Filled Nylon



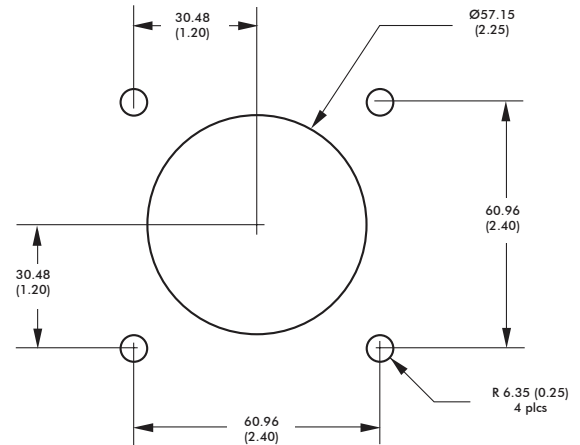
TERMINATION

The CJ series is fitted with a 18" ±0.5" AWG22 wire harness. Further non-standard connectors and cable options are available upon request.

WIRE COLOR	SIGNAL
RED	5 VDC for analog outputs within voltage range 0 VDC to 5 VDC 7 VDC to 35 VDC for voltage regulator options
BLACK	Ground
BLUE	X axis data
YELLOW	Y axis data
GREEN	Z axis data
BLUE / WHITE	Redundant X axis
YELLOW / BLACK	Redundant Y axis
GREEN / BLACK	Redundant Z axis
ORANGE	Button 1
VIOLET	Button 2
GREY	Button 3
BROWN	Button 4
GRAY / BLACK	Button 5
BLUE / WHITE	Button 6
YELLOW / BLACK	Button 7
GREEN / BLACK	Button 8
VIOLET / WHITE	Button 9
WHITE	Common



PANEL CUT-OUT



CAN J1939 INTERFACE SPECIFICATION

The CJ Series utilizes redundant Hall effect sensors to measure the primary X and Y axis. The CAN controller support various button configurations as well as proportional thumbwheels and mini-joysticks for additional axis data.

All axis and button data are delivered on a CAN 2.0B compliant physical interface. Two additional signals allow configuration of the controller Source Address. Controller messages are delivered per the SAE J1939-71 message protocol.

CAN 2.0B INTERFACE PARAMETERS

- Baud rate: 250 KHz
- Transmission repetition rate: 50ms
- BJMI/EJMI interval time: 20ms
- Terminating resistor: No
(available by special request to factory)
- Connection to Deutsch DTM04-6P connector:

Pin	Color	Function
1	White	CAN Lo
2	Green	CAN Hi
3	Blue	Source Address SEL 1
4	Orange	Source Address SEL 0
5	Black	Ground
6	Red	6 - 35 VDC

Proportional, multi-function hand grip controllers • non-contacting Hall effect technology



CAN J1939 INTERFACE SPECIFICATION (CONTINUED)

CAN MESSAGE PROTOCOL

- Primary Axis and button data on Basic Joystick Message 1 (BJM1):
 - Priority: 3
 - Base PGN: 0xFDD6
 - Source address: 0x10¹
 - Data field: 8 bytes
- Redundant Axis data on Extended Joystick Message 1 (EJM1):
 - Priority: 3
 - Base PGN: 0xFDD7
 - Source address: 0x10¹
 - Data field: 8 bytes
- Additional thumbwheels and mini-joysticks data on Extended Joystick Message 2 (EJM2):
 - Priority: 3
 - Base PGN: 0xFDD9
 - Source address: 0x10¹
 - Data field : 8 bytes

Note 1: Alternate source addresses can be configured by grounding of the blue and/or orange wires.

- Source address= 0x10: ORANGE= floating , BLUE= floating (default)
- Source address= 0x20: ORANGE= floating, BLUE= grounded
- Source address= 0x30: ORANGE= grounded, BLUE= floating
- Source address= 0x40: ORANGE= grounded, BLUE= grounded

BJM1 DATA FIELD STRUCTURE:

START POSITION (BYTE/BIT)	LENGTH (BITS)	FUNCTION
1/1	2	Primary X-axis neutral position status
1/3	2	Primary X-axis left position status
1/5	2	Primary X-axis right position status
1/7 to 2/8	10	Primary X-axis position data
3/1	2	Primary Y-axis neutral position status
3/3	2	Primary Y-axis down position status
3/5	2	Primary Y-axis up position status
3/7 to 4/8	10	Primary Y-axis position data
6/1	2	Button 4 status
6/3	2	Button 3 status
6/5	2	Button 2 status
6/7	2	Button 1 status
7/1	2	Button 8 status (Paddle if 6 button configuration) ²
7/3	2	Button 7 status (Trigger if 6 button configuration) ²
7/5	2	Button 6 status
7/7	2	Button 5 status
8/5	2	Button 10 status (Paddle if 8 button configuration) ²
8/7	2	Button 9 status (Trigger if 8 button configuration) ²

Note 2: If configured with no buttons, trigger and/or paddle would be positioned in Button n+1 and Button n+2.

EJM1 DATA FIELD STRUCTURE:

START POSITION (BYTE/BIT)	LENGTH (BITS)	FUNCTION
1/1	2	Redundant X-axis neutral position status
1/3	2	Redundant X-axis left position status
1/5	2	Redundant X-axis right position status
1/7 to 2/8	10	Redundant X-axis position data
3/1	2	Redundant Y-axis neutral position status
3/3	2	Redundant Y-axis down position status
3/5	2	Redundant Y-axis up position status
3/7 to 4/8	10	Redundant Y-axis position data

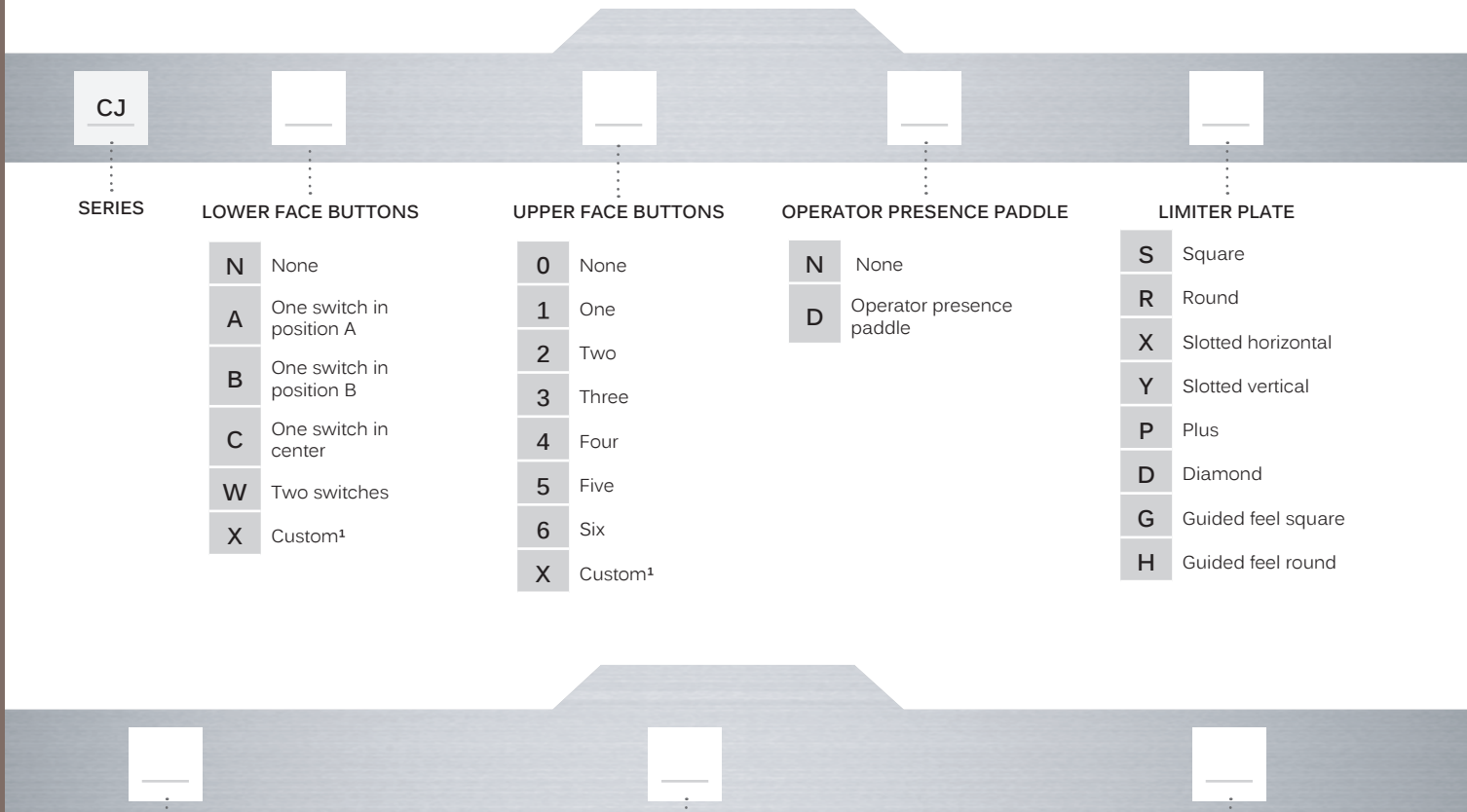
EJM2 DATA FIELD STRUCTURE:

START POSITION (BYTE/BIT)	LENGTH (BITS)	FUNCTION
1/1	2	A-axis neutral position status
1/3	2	A-axis left position status
1/5	2	A-axis right position status
1/7 to 2/8	10	A-axis position data
3/1	2	B-axis neutral position status
3/3	2	B-axis left position status
3/5	2	B-axis right position status
3/7 to 4/8	10	B-axis position data
5/1	2	C-axis neutral position status
5/3	2	C-axis left position status
5/5	2	C-axis right position status
5/7 to 6/8	10	C-axis position data

CJ series

Proportional, multi-function industrial hand grip controllers •
non-contacting Hall effect technology

BUILD YOUR PART NUMBER



<p>CJ</p> <p>.....</p> <p>SERIES</p>	<p>.....</p> <p>LOWER FACE BUTTONS</p> <table border="0"> <tr><td>N</td><td>None</td></tr> <tr><td>A</td><td>One switch in position A</td></tr> <tr><td>B</td><td>One switch in position B</td></tr> <tr><td>C</td><td>One switch in center</td></tr> <tr><td>W</td><td>Two switches</td></tr> <tr><td>X</td><td>Custom¹</td></tr> </table>	N	None	A	One switch in position A	B	One switch in position B	C	One switch in center	W	Two switches	X	Custom ¹	<p>.....</p> <p>UPPER FACE BUTTONS</p> <table border="0"> <tr><td>0</td><td>None</td></tr> <tr><td>1</td><td>One</td></tr> <tr><td>2</td><td>Two</td></tr> <tr><td>3</td><td>Three</td></tr> <tr><td>4</td><td>Four</td></tr> <tr><td>5</td><td>Five</td></tr> <tr><td>6</td><td>Six</td></tr> <tr><td>X</td><td>Custom¹</td></tr> </table>	0	None	1	One	2	Two	3	Three	4	Four	5	Five	6	Six	X	Custom ¹	<p>.....</p> <p>OPERATOR PRESENCE PADDLE</p> <table border="0"> <tr><td>N</td><td>None</td></tr> <tr><td>D</td><td>Operator presence paddle</td></tr> </table>	N	None	D	Operator presence paddle	<p>.....</p> <p>LIMITER PLATE</p> <table border="0"> <tr><td>S</td><td>Square</td></tr> <tr><td>R</td><td>Round</td></tr> <tr><td>X</td><td>Slotted horizontal</td></tr> <tr><td>Y</td><td>Slotted vertical</td></tr> <tr><td>P</td><td>Plus</td></tr> <tr><td>D</td><td>Diamond</td></tr> <tr><td>G</td><td>Guided feel square</td></tr> <tr><td>H</td><td>Guided feel round</td></tr> </table>	S	Square	R	Round	X	Slotted horizontal	Y	Slotted vertical	P	Plus	D	Diamond	G	Guided feel square	H	Guided feel round
N	None																																																			
A	One switch in position A																																																			
B	One switch in position B																																																			
C	One switch in center																																																			
W	Two switches																																																			
X	Custom ¹																																																			
0	None																																																			
1	One																																																			
2	Two																																																			
3	Three																																																			
4	Four																																																			
5	Five																																																			
6	Six																																																			
X	Custom ¹																																																			
N	None																																																			
D	Operator presence paddle																																																			
S	Square																																																			
R	Round																																																			
X	Slotted horizontal																																																			
Y	Slotted vertical																																																			
P	Plus																																																			
D	Diamond																																																			
G	Guided feel square																																																			
H	Guided feel round																																																			
<p>.....</p> <p>SPRING TENSION</p> <table border="0"> <tr><td>0</td><td>Standard</td></tr> <tr><td>00</td><td>0V to 5V</td></tr> <tr><td>01</td><td>0.5V to 4.5V</td></tr> <tr><td>02</td><td>0.25V to 4.75V</td></tr> <tr><td>03</td><td>1V to 4V</td></tr> <tr><td>04</td><td>0V to 5V Sensor 1 0V to 5V Sensor 2</td></tr> <tr><td>05</td><td>0.5V to 4.5V Sensor 1 0.5V to 4.5V Sensor 2</td></tr> </table>	0	Standard	00	0V to 5V	01	0.5V to 4.5V	02	0.25V to 4.75V	03	1V to 4V	04	0V to 5V Sensor 1 0V to 5V Sensor 2	05	0.5V to 4.5V Sensor 1 0.5V to 4.5V Sensor 2	<p>.....</p> <p>OUTPUT OPTIONS</p> <table border="0"> <tr><td>06</td><td>0.25V to 4.75V Sensor 1 0.25V to 4.75V Sensor 2</td></tr> <tr><td>07</td><td>1V to 4V Sensor 1 1V to 4V Sensor 2</td></tr> <tr><td>08</td><td>0V to 5V Sensor 1 5V to 0V Sensor 2</td></tr> <tr><td>09</td><td>0.5V to 4.5V Sensor 1 4.5V to 0.5V Sensor 2</td></tr> <tr><td>10</td><td>0.25V to 4.75V Sensor 1 4.75V to 0.25V Sensor 2</td></tr> </table>	06	0.25V to 4.75V Sensor 1 0.25V to 4.75V Sensor 2	07	1V to 4V Sensor 1 1V to 4V Sensor 2	08	0V to 5V Sensor 1 5V to 0V Sensor 2	09	0.5V to 4.5V Sensor 1 4.5V to 0.5V Sensor 2	10	0.25V to 4.75V Sensor 1 4.75V to 0.25V Sensor 2	<p>.....</p> <p>ADDITIONAL OPTIONS</p> <table border="0"> <tr><td>11</td><td>1V to 4V Sensor 1 4V to 1V Sensor 2</td></tr> <tr><td>13</td><td>USB</td></tr> <tr><td>14</td><td>Cursor emulation</td></tr> <tr><td>15</td><td>CAN bus J1939</td></tr> <tr><td>16</td><td>CANopen</td></tr> <tr><td>XX</td><td>Custom¹</td></tr> </table> <table border="0"> <tr><td>N</td><td>None</td></tr> <tr><td>V</td><td>Voltage regulator²</td></tr> <tr><td>E</td><td>Environmental sealing³</td></tr> </table>	11	1V to 4V Sensor 1 4V to 1V Sensor 2	13	USB	14	Cursor emulation	15	CAN bus J1939	16	CANopen	XX	Custom ¹	N	None	V	Voltage regulator ²	E	Environmental sealing ³								
0	Standard																																																			
00	0V to 5V																																																			
01	0.5V to 4.5V																																																			
02	0.25V to 4.75V																																																			
03	1V to 4V																																																			
04	0V to 5V Sensor 1 0V to 5V Sensor 2																																																			
05	0.5V to 4.5V Sensor 1 0.5V to 4.5V Sensor 2																																																			
06	0.25V to 4.75V Sensor 1 0.25V to 4.75V Sensor 2																																																			
07	1V to 4V Sensor 1 1V to 4V Sensor 2																																																			
08	0V to 5V Sensor 1 5V to 0V Sensor 2																																																			
09	0.5V to 4.5V Sensor 1 4.5V to 0.5V Sensor 2																																																			
10	0.25V to 4.75V Sensor 1 4.75V to 0.25V Sensor 2																																																			
11	1V to 4V Sensor 1 4V to 1V Sensor 2																																																			
13	USB																																																			
14	Cursor emulation																																																			
15	CAN bus J1939																																																			
16	CANopen																																																			
XX	Custom ¹																																																			
N	None																																																			
V	Voltage regulator ²																																																			
E	Environmental sealing ³																																																			

NOTES

¹ Contact Technical Sales for custom options

² Not available on dual output

³ Environmental sealing dependent on specific configuration. Please consult factory for additional information.

* Mounting accessories: standard hardware includes 4 Phil. screws (6-32x7/8).

ERMEC, SL BARCELONA

Francesc Teixidó, 22
08918 Badalona
España
bcn@ermec.com
Tel.: (+34)93.450.16.00

ERMEC MADRID

c/Puerto Rico, 4
28222 Majadahonda
España
madrid@ermec.com
Tel.: (+34)91.828.56.51

ERMEC PORTUGAL

Rua Brito Capelo, 807
4450-068 Matosinhos
Portugal
portugal@ermec.com
Tel.: (+35)1707509539

ERMEC BILBAO

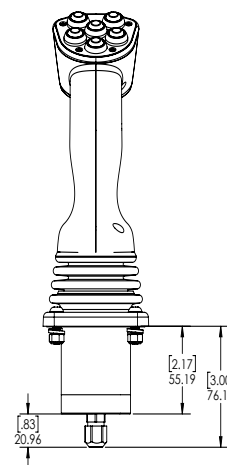
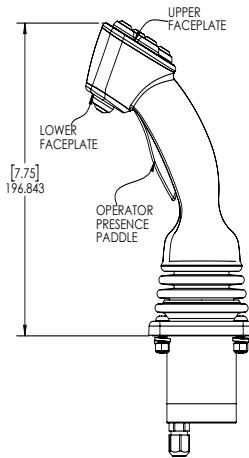
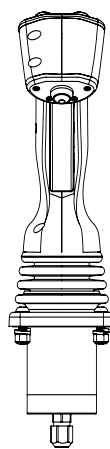
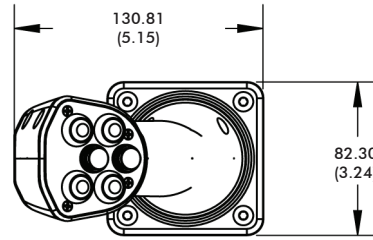
bilbao@ermec.com
Tel.: (+34)91.828.56.51

www.ermec.com

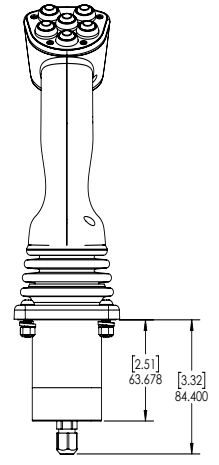


Proportional, multi-function industrial hand grip controllers • non-contacting Hall effect technology

DIMENSIONS



Analog & USB



CAN



LOWER FACE BUTTONS



N



A



B



C



W

OMEGA FUSIBILI
Via Edison, 10
I-20057 Assago (MI)
ITALIA
omega@omegafusibili.it
Tel.: (+39)02488481

OMEGA COMPOSANTS
220 rue Ferdinand Perrier
69800 Saint-Priest
FRANCE
omega@omegacomposants.fr
Tel.: +33(0)478908564

ERMEC PORTUGAL
Rua Brito Capelo, 807
P-4450-068 Matosinhos
PORTUGAL
portugal@ermec.com
Tel.: (+35)1707509539

ERMEC SPAIN
Francesc Teixido, 22
E-08918 Badalona
ESPAÑA
comercial@ermec.com
Tel.: (+34)91.828.56.51



CJ series

Proportional, multi-function industrial hand grip controllers • non-contacting Hall effect technology



USB SPECIFICATIONS

- Supply Voltage Range: 5.00 VDC
- Maximum current: 70 mA
- USB version: 2.0

USB GAME CONTROLLER

Featuring USB 2.0 HID compliant interface, APEM's USB joysticks are recognized as standard HID "game controller" devices. Adhering to the HID specification, APEM's USB joysticks are plug-and-play with most versions of Windows. Joystick button and axis assignments are dependent upon the controlled application.

Features

- USB 2.0 HID compliant "game controller" device
- Easy to install and operate
- Functions determined by controlled application
- 12-bit (0 to 4095) axis resolution

Termination (supplied cable)

- USB Male Type A Connector (198 cm)
- (84" +/-1") - overmolded cable - Male Type A USB connector (Output option 13)

USB CURSOR EMULATION

The Cursor Emulation option converts multi-axis joystick output into a mouse or cursor control device. The Cursor Emulation option is ideal for vehicle applications subjected to dirt and high vibration which makes operating a traditional cursor control device difficult. Cursor simulation is only compatible with Window OS.

Features

- HID compliant "mouse" device

Button Function

- B1: Left Mouse Click
- B2: Right Mouse Click

Termination (supplied cable)

- USB Male Type A Connector (185 cm):
- (72" +/-1") - overmolded cabled - Mini B to Male Type A USB connector (option 0U)

SUPPORTED OPERATING SYSTEMS: USB GAME CONTROLLER AND CURSOR EMULATION

Windows Operating System

- Windows 7
- Windows 8.1
- Windows 10

Linux Operating System

APEM's USB joysticks are compatible with Linux, although system compatibility is not guaranteed. The user is responsible for verifying specific Linux OS compatibility.

Custom Firmware

Custom configurations and firmware is available upon request. Available options include:

- 8-bit axis resolution
- 10-bit axis resolution
- Signed bit axis resolution
- Custom USB product name



VOLTAGE REGULATOR SPECIFICATIONS

The Voltage Regulator allows APEM's Hall effect joysticks to operate with a range of supply voltages..

Voltage Regulator - Unipolar

- Supply Voltage Range: 8-35 VDC
- Output Voltage Range: see output options
- Maximum Current: 90 mA

Voltage Regulator - Bipolar

- Supply Voltage Range: 11-35 VDC
- Output Voltage Range: ± 10 VDC
- Maximum Current: 90 mA

Termination (flying leads)

- 28 AWG 20.32 cm (8.0") ± 1.54 cm (1") PTFE

ERMEC, SL BARCELONA
Francesc Teixidó, 22
08918 Badalona
España
bcn@ermec.com
Tel.: (+34)93.450.16.00

ERMEC MADRID
c/Puerto Rico, 4
28222 Majadahonda
España
madrid@ermec.com
Tel.: (+34)91.828.56.51

ERMEC PORTUGAL
Rua Brito Capelo, 807
4450-068 Matosinhos
Portugal
portugal@ermec.com
Tel.: (+35)1707509539

ERMEC BILBAO
bilbao@ermec.com
Tel.: (+34)91.828.56.51

www.ermec.com

